



## Clutha Schools Triathlon

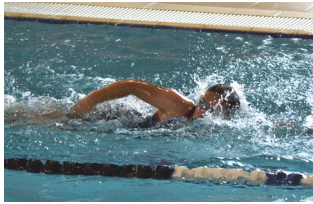


Marcus

On 16th March, Tokomairiro High School Year 8 students Lucy Clark, Marcus Wills, Ryan Shanks, Pippa Greene and Caitlyn Scott participated in the Clutha Schools Triathlon. It was a really cold, wet and windy day and we were so proud of them for overcoming the less than perfect weather conditions to complete their events. A big thanks to Kaitlin Burgess and Daiha Coulter-Lawler who volunteered to represent the school as marshals for the event (a very important role to help the day run smoothly).



Pippa



Lucy

Here's what they had to say about the experience: "It was a cold miserable day and I was standing in the rain. Finally Ryan ran around the corner. I dived into the water and it was so nice and warm which came as a surprise. I was so happy we did it!" - Lucy



Caitlyn

"The biking was really hard as there was a head wind but became easier when we got to turn around and get pushed along giving me a well needed rest. I was ready for a hot chocolate after the race." - Ryan



Ryan

"GO!" I set off on my adventure and felt nervousness rush through my body when I started my run. I rushed through the wind and pedalled through the pain and ended with a very warm surprise of the swimming pool. I felt very proud of myself once the beeper for the finish line went off. - Pippa

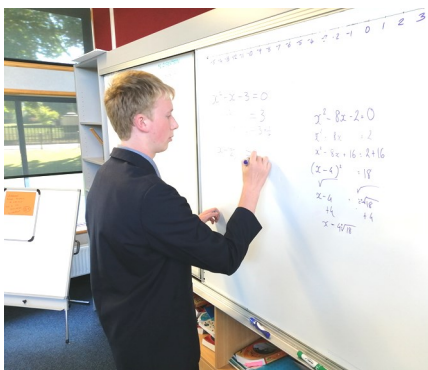


"I found the race pretty tough but enjoyed the reward of a Chai Latte at the end of the event." - Marcus

"The wind was horrible! For the running and biking there was a very strong head wind which slowed us all down, but I pushed past it and completed my race feeling very proud of myself. Lucy's mum shouted us hot chips on the way home which we really enjoyed! Thank you Lyn" - Caitlyn

"We really enjoyed being a part of the day. The most memorable experience was helping a student by walking with her and encouraging her to continue going and cross the finish line despite complete exhaustion." - Kaitlin & Daiha

## Mathematics at Tokomairiro High School



Above: Seth Black (Year 12) solving advanced algebra. Aright: Bindy the runaway dog helps Alex Cox-Herring with his Formal Inference notes.

At this stage of the year, Junior students are focussing on core numerical skills, especially developing confidence in their integer, decimal, fraction, and percentage skills. Finance and other real-world applications are key contexts for this learning.

Our seniors use a lot of technology now in the 21st Century, especially in their Statistics work, so graphs and data manipulation are almost completely on computers. However, our Calculus students have to know the concepts before they use application tools so confidence in algebra is achieved through constant practice.

To support student learning, students have access to online practice sites such as Education Perfect and the School really encourages students needing to improve skills to use these in their homework/study time.



### Inside this week....

- School Newsletter
- Whanau Ora Kaimahi
- Automative Course
- Club and Group Reports and Results

**superValue Milton Weeklies**

SuperValue Milton: 59 Union Street, Milton  
Ph 417 8008. Open 7am - 8pm, 7 days.

Prices apply until 28th March 2021. While stocks last at SuperValue Milton only.

**\$23<sup>90</sup> kg**



Fresh NZ Beef Sirloin Steak or Roast

**\$6<sup>00</sup> kg**



Loose USA Mandarins

# Tokomairiro High School Newsletter...



**SCHOOL MISSION: Inspiring Excellence in Tiny's Milton**

## Week Eight - Term One

### Tena koutou katoa,

Greetings to you all. After this week, there are only three weeks of school left this term, two of those being shortened weeks due to Easter. Students are encouraged to make the most of these three weeks of classes, especially our senior students who should now be gaining credits towards their qualifications.

### The Power of the Moment

This weekend just past, I attended the District Rotary Conference which was held in Waimate. The theme of the conference was "The Power of the Moment" and a range of speakers talked about "moments" that affected their life journey. Dame Therese Walsh, Chairman of the Board of Air New Zealand, shared her journey with us and said that being open to opportunities, and willing to give things a go, is what has led to the meteoric rise in her career. On the way, she has worked for New Zealand Rugby and for New Zealand Cricket, and organised the world cup events for both these groups.

Dame Therese also talked about the power of 'little' moments and how these can all add up to make a huge difference. That little moment you take tomorrow and the next day and the next day can make a big difference in your future.

I encourage all members of our school community to look for those little moments, be open to opportunities and be ready to make the most of them.

### Future Focus Learning Project

The FFL Project involves all the schools in South Otago and is supported by a grant from the Otago Community Trust. Last week, the public launch of the Future Focus Learning Project was held at Rosebank Lodge. It was fantastic to have such a great turn out and very valuable opportunity to begin making connections with local community groups and businesses. A brainstorming session led to a great list of possible community projects where students could focus on problem-based learning. Some of the examples suggested for Milton were: create a walk around Milton based on history; create a Milton pottery museum - develop modern pottery interest/shop; main road upgrade - include the voice of young people; truck bypass for Milton - no

cars allowed; new developments - pool, library, toilets - student input; how do we fill empty shops? Some of the other topics suggested were: food sustainability within our community; how do we promote the need for volunteers in our community? 3D printing technology - students making custom mouthguards with 3D printers; videos - kids creating videos for kids - how to look after your oral health - creation of a website to promote this. There are lots of great ideas and I am sure there will be lots of student interest.

### Touch Team

Our development Touch Team spent last weekend at the South Island tournament in Christchurch. The team was a group of young players led by a small group of more senior players. Although they played some very tough games and had some big losses, they never gave up and improved so much over the weekend. Thanks to our two coaches, Zoey Flockton and Paul Tupai, for the time they have given in preparing this group for the trip, and for giving of their time over the weekend. The strength of the senior touch team bodes well for the future!

### Kepler Track Tramp

This week, a group of ten senior students, accompanied by David Yilma and Lynne Johnston, are venturing to Fiordland to complete the Kepler Track tramp. This is a beautiful part of New Zealand which I am sure all these young people will enjoy. Thank you to David and Lynne for giving of their time.

### Southland Athletics

Congratulations to the following students who will be representing Tokomairiro High School at the Southland Athletics competition this coming Saturday: Saffron Healey - 800m, 1500m, Discus; Pippa Greene - 800m; Izzy Leyden - 800m, 1500m; Troy Mallon - 200m, Long Jump. We wish them, and all the other Milton youngsters competing, the very best.

### Blue Light Take A Kid Flying - Sunday 18th April 2021

In conjunction with the South Otago Aero Club, we have the opportunity for two or three students to go flying on Sunday 18 April. This is open to any Year 7 to 13 students. Interested students should collect a parent/caregiver consent form from the school office and return it before Tuesday 13 April. If you are interested, make sure you complete the form - sometimes we get offered extra seats!

### Lunches in Schools

We are starting the Ministry Healthy Lunches in Schools programme, Ka Ora Ka Ako, at the beginning of Term 2. Our providers will be Kelly's Kitchen, Milton Subway and Kaan's Catering. Dietary requirements can generally be catered for. All students in the Milton schools will receive a free lunch every day. Note that our school canteen will still be open for morning tea or students can bring along morning tea from home. More information coming soon.

### Nga mihi

**Glenis Sim**

**Principal**

## Tiny's Milton Butchery



112 Union Street  
Milton  
Ph 417 8223

## Specials

'Honey Cured'  
Corned Silverside  
Delicious Hot or Cold  
Only \$11.95kg, Save \$4kg

Lean Steak Mince  
Only \$10.95kg, Save \$4kg

Marinated BBQ Chops  
Only \$15.95kg

Tasty Cheese & Pineapple  
Crumbed Sausages  
Only \$11.95kg

CLOSED  
EASTER SATURDAY

Check our website  
[www.miltonbutchery.co.nz](http://www.miltonbutchery.co.nz)  
or our Facebook page for  
Saturday Specials, online  
specials, meat packs, etc.

## Dates to Remember...

Saturday 27th March - Southland Athletics  
Mon 29th March - Yr 7/8 New Subject Rotation Begins  
Friday 2nd April - Good Friday  
Monday 5th April - Easter Monday  
Tuesday 6th April - Easter Tuesday - School Closed  
Wednesday 7th April - University of Otago Liaison Officer Visit

*Ki to kohahi te Kākaho ka  
whati, ki te kāpuia, e kore e  
whati When reeds stand  
alone, they are  
vulnerable, but bound  
together they are  
unbreakable.*



## Genesis

The Genesis is a free publication, delivered weekly to homes and businesses in Milton and Waiholā, and is available on the school website, Facebook or via email. The Genesis office is open Monday and Tuesday 8:30am - 3:30pm. If the office is unattended, any articles, advertising or payments can be taken to the school office or left in the secure box in the office door. If you want to leave a phone message for the Genesis outside office hours, please phone the Tokomairiro High School office (417 8620).

**Genesis Deadlines:** Advertising - Monday 9am, Articles - Monday 12 noon. Articles/ advertisements can be emailed to the Editor at [genesis@tokohigh.school.nz](mailto:genesis@tokohigh.school.nz). Genesis is delivered free to your letterbox from Tuesday 4pm to Thursday 6pm.



## Students attend Automotive Course

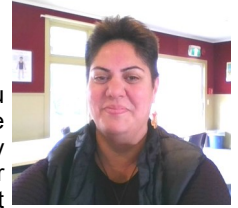
Tokomairiro High School students Will Scurr and Blue Gunnion attend the Otago Secondary Tertiary College Automotive course on Fridays, run by Otago Polytechnic. Their tutor is Elliot King. The boys work on unit standards theory relating to the industry in the morning, and practical in the afternoon.

The photo shows Blue (left), Will (centre), with Elliot and other members of the class on Friday 12 March.



## New Whānau Ora Kaimahi at Tokomairiro High School.

Tēnā koutou katoa,  
Ko Ra-ana Gardner tōku ingoa.



I am here to help Students and Whānau in any way necessary to ensure the Tokomairiro High School community supports their every need. Together let's ensure all ākonga become the best they can be.

Please call or Email me to discuss anything or for help with:-

- Hui/meetings with the school
- Social wellbeing
- School relationships
- Attendance
- Goal setting
- Connections with community services
- Any other concern

I am now the Whānau Ora Kaimahi (Family Wellbeing Support Worker) at Tokomairiro High School. My role is to help students and whānau to improve their experience with the school.

I have strong connections to the school; as a parent and an employee at the kura since 2019.

I have the relevant experience and qualifications but more importantly the connections, support and mandate from the kura to make a real difference.

I can be contacted on 03 417 8620 or email me on ra-ana@tokohigh.school.nz



## Letter to the Editor

### The Pool

I feel great disappointment to see a notice on the swimming pool door advising us that the pool is closing for the season on the 28th March.

I feel that the benefits of the pool should be available to us for longer than 5 months of the year.

We have the Easter and School holidays just around the corner and could well do with having a pool open for the community.

Its great hearing about potential new pool for Milton but shouldn't the council make more of a commitment to have our existing pool open and providing health benefits to the Milton community. I feel we need to voice our concerns.

Sue Nelson

## Good Friday Cross Walk

Starting from the car park alongside our Presbyterian Heritage Church at 8.30 am on Good Friday 2nd April, a group of us plan to walk a cross around the streets of Milton.

The walk will pass all the churches of Milton and cover both sides of the highway. All are welcome to walk with us (or walk a part of it).

Small coloured crosses will indicate the path of the walk we will take. It will take us about an hour to complete the walk finishing with a walk down Ossian Street to the doors of the Heritage Church.

A map of the walk is to be posted on the Milton Garage facebook page.

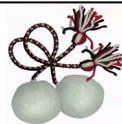
Any queries contact Raewyn 0274816146.



## Toi Ora

Wednesday 31st March  
Whakatipu kakano

Meet after school in the whare. All welcome!



Let me guide you through your  
Buying & Selling journey...

**Megan Young** Licensee Salesperson  
021 634 035  
megan.young@raywhite.com

Ray White Dunedin Proven Realty Ltd Licensed (REA 2008)

**kink n the road** Pensioner Lunches  
BAR & BISTRO Tuesday 30th March  
from 12pm

**Main, dessert, tea or coffee**

Bookings Essential. Courtesy coach available for pick up and drop off between 11:30am and 2.00pm

**ALL FOR \$15!**

**White Horse Inn 147 Union Street, Milton 03 417 8049**



## Sumpter Moore –Barristers & Solicitors

*Quote of the week:*

"I don't make jokes. I just watch the government and report the facts"  
*Will Rogers (1879 - 1935)*

For all your legal requirements, contact our friendly team at

5 Eden Street, (PO Box 16) Milton.

Phone (03) 417-8004 Fax (03) 417-8002

## Bible Reading for Today

"I have no greater joy than to hear that my children are walking in the truth", 3 John 1:4

## St Patrick's Day at Ashlea Grove



Ashlea Grove staff and residents celebrated St Patrick's Day on 17th March.

Staff dressed up in anything and everything green, and Don Wilson played some Irish tunes on his pipes which was very well received. To finish off the celebrations, a chocolate cake iced with green icing was enjoyed by all.

*Left: Sandra Johnston dressed in her green finery, with Don Wilson, piper.*

## Music Lessons Underway



There are plenty of great sounds coming from the music rooms as lessons get underway for the year.

The weekly lessons are held with itinerant music teachers and cover all levels from beginners to more advanced classes.



*Left above and below: Tutor John Tutaki helps Lydia Bransgrove and Josh Tiffany (both Year 7) to understand the rhythm in their drumming.*

## Giant Pumpkins



The Hort dept has been experimenting growing super sized pumpkins, pictured here with Maddy Hopkins and Brooke Anthony.

These are Atlantic Giants seeds which were provided by Dylan Clark, and we propagated them. Pretty successful we think. Watch this space to see how heavy they are!



## News From the Trenches

What an absolute massive day last Saturday for our Spud Dig competition. With over 40 entries, we have reinforced our position as having the most sought after entertainment venue in South Otago. We lead, others attempt to match us..

The Queen of the Dig as she will now be referred to, is Mary-Anne Good who reigned supreme with an outstanding effort of 8.2kgs to take top prize. Second was another good effort by Gerry Wyber with Brian Forde coming 3rd. Unfortunately for Dean Finch, he planted his spud upside down, as a result his spud was heading for China. Another couple of diggers came across an earthquake which caused some unsteadiness underfoot. But overall this was another hugely successful day highlighted by the highest number of entries which shows this day grows from strength to strength - unlike the odd spud.

The big days just keep coming with our Land Raffle night this Saturday kicking off with drinks about 6pm, - we have that many excellent prizes, we have to start early or else we will be there past midnight. So come along if you have purchased a ticket as there are prizes for accommodation in Queenstown, Highlands Park excitement, Monarch Cruises, plus many, many more - thats only the tip of a very cool iceberg - so make sure you are there.

*Private Pike*

## Milton Garden Club

*8th March - Trip to Olveston and Glenfalloch Gardens*

With the help of Google Maps we all made it to Olveston to look at the garden there. My favourite part was the glasshouse with beautiful huge begonias and the luscious, vibrant colours of the Cape Primroses made a magnificent show, especially the dark purple ones. The gift shop was good too and the paua and silver jewellery particularly fine.

Next stop was Glenfalloch Gardens on the Otago Peninsula. Up the steep drive we found a huge carpark with hardly anyone around as the Cafe and office are closed on Mondays. A massive stone fantail guards the entrance to the walks around this garden which sports a group of metal flowers made of soup spoons and forks in amongst the greenery. Tuis and grey warblers sang in the trees and a large wood pigeon flew over the buildings. We even found a little glass-topped picnic table and two chairs in a sheltered area near the carpark. It was a perfect place for a little break. Off we went to the Tuppence Cafe on Larnach Rd for a very welcome lunch. This six year old cafe is very popular with superb service and tasty well priced food.

There was a hiccup with the raffles. The person who was supposed to provide them forgot and apologised by text as they were not on the trip. So the two prize winners had to choose their own prize. The first draw was won by Jenny Ford and the second draw was won by Helen Nixon.

Our next trip is to Earthlore Gardens at 129 HinaHina Rd, Owaka on Monday 12 April. Members will be rung. For further information ring or text Annette Gillies 4174173 or 021 0786 366.



# Supporting future leaders.

Are you a future leader of the Tokomairiro region?

Check the eligibility criteria and apply online.

[brucestewartleadership.org](http://brucestewartleadership.org)

**2** FUNDING ROUNDS PER ANNUM

**Grants Awarded**  
May and October each year



## Toko Golf



Hidden Holes 16.3.21

### 0-26.6

Areta Smales 47-13-24 Helen Vollweiler 51-13.5-37.5  
**26.7 -**  
Dorothy Kennedy 54-19.5-34.5  
Joan Clark 60 -23.5-36.5  
Pam Keddell 59 -19-40.0

### Toko Men's Golf 20.3.21

Leckie Shield Challenge from Owaka:  
Toko retained the Shield 5/1

Stableford P Stevenson 37 c/b  
P Scott 42 L Adam 37  
R Stringer 41 M Scott 34 c/b

Twos: M Scott and B Hill Hidden Birdie No2: D Curd  
Nett Eagle not struck.

### Ladies March Open Tournament Sponsored by Berriedale Farm.

Best Nett Over Field - Ruth Stiven (Tapanui) 93-33-60  
Kindly Sponsored by Marion Woodhead

#### Division One:

Best Gross - Susie Bearman (Toko) 88  
Best Nett - Jenny Good (Toko) 91-23-68  
1st Stableford - Karen Mills (Clinton) 39

#### Division Two:

Best Gross - Alwyn Stiven (Tapanui) 101  
Best Nett - Dorothy Kennedy (Toko) 107-39-68  
1st Stableford - Annette Tatupu (Toko) 39

A great tournament - 48 entries from nine clubs.

## Waiholo-Clarendon Women's Institute Report

Waiholo / Clarendon Women's Institute held its monthly meeting on 15th March 2021 followed by the Annual General Meeting. Two resignations were accepted with regret and one new member joined.

Roll Call - Parcel for Birthday bag - Stamps for Mid Otago Federation.

What I dislike - some examples included injections, cluster flies, thistledown, cell phone call during conversation, stray cats, insurance advert, mice, following a slow vehicle which speeds up on the passing lanes and putting drops in ones own eyes.

Motto: Life is like a camera- FOCUS on what's important, CAPTURE the good times, DEVELOP from the negatives, and if things don't work out ... take another shot!

## Bridge



### Toko Champs 10.03.21

T Peterson/S Agnew 70.83%	C Mackie/L Clark 41.67%
J Walker/V Stanley 55.56%	K Powell/P Mallon 37.50%
T Morland/K Roughan 54.17%	T Tetlow/C Harrex 36.11%
J Scott/A Broome 54.17%	

### Presidents Pairs 17.03.21

K Powell/A Broome 60.00%	J Walker/V Stanley 53.75%
C Mackie/K Roughan 58.75%	T Morland/L Clark 45.00%
H Gardner/J Scott 56.25%	C Harrex/J Turnbull 26.25%



## Toko Rugby Report

Toko headed to Mosgiel to defend the highly regarded Ken Bloxham Trophy on Sunday.

Toko arrived slightly down on player numbers this week for a variety of reasons, with a few heavy hitters unavailable. Regardless of this, Toko fronted up with a team determined to bring Blocky home. Toko started off strongly with full of enterprise and attack – they quickly went out to a strong 12-0 lead with tries to Jacky Scott and Nic Shaw. Toko looked to be full of running and if they nailed a couple more opportunities, Taieri would have found it difficult to come back. Taieri hung in there to score 2 tries to make halftime 12 - all.

The second half was a tight affair with Toko opening the scoring with a good try to Scott Anderson, but Taieri came back strongly to run out eventual winners 27-19 and retain the trophy.

Plenty of positives for Toko this week with all players getting more game time before competition starts. The front row of two O'Sullivan brothers and Michael Aitken played the full 80 mins, with Michael Aitken having one of his best games in a Toko jersey. Others to perform strongly were both O'Sullivans, Keiran and Bernie, both on defence and with ball in hand. Shawn Aitken cleared the ball well, Bradley Frost ran strongly, while Jared Hayes looked a threat from the back.

Next week the competition kicks off with a home game vs Valley which should be an entertaining affair. Also playing at 1pm in a curtain raiser is the South Otago women's team, so come along for an excellent double header.

The Judge



# ANNUAL SALE

## 27 MARCH - 15 MAY 2021

A PASSION FOR PLANTS SINCE 1932

OPEN MONDAY TO SATURDAY 9AM - 5PM • 99 BUSHYHILL STREET, TAPANUI, WEST OTAGO • P: 03 204 8250

### Shelter Trees

EACH FROM \$5

### Smaller Plants & Perennials

3 FOR \$21

### Selected Rhododendrons

EACH \$19.99

### Farmers Selection

10 FOR \$90

### Riparian Plantings

100 FOR \$50

### Tall Trees

2 FOR \$80

### Small Trees

EACH \$19.99

### Hardy Shrubs & Natives

3 LARGER PLANTS FOR \$29.99

### Baby Shrubs

10 FOR \$25

Shop online: [www.bmn.co.nz](http://www.bmn.co.nz)

# Genesis Classifieds ...

## Public Notices

### WANTED: NETBALL COACHES FOR 2021

We need coaches for the Senior B and Year 7/8 Teams.  
If this sounds like you and you would like to know more, please contact sports@tokohigh.school.nz



## Public Notices

**Milton Senior Citizens Club**  
**Annual General Meeting**  
**Friday, 26th March 2021**  
**at 1:30pm**  
**Finger Food Luncheon**





## Public Notices

### WANTED URGENTLY!

*Secretary & Treasurers Positions*  
Milton Senior Citizen's Group  
Please ring Moira Hastie  
ph 03 417 8542 before  
26th March.

## Clutha District Youth Council - Youth Development Fund

Need some \$\$\$ to help make things happen for you or your group?? Are you:

-  A resident of the Clutha District?
-  Aged between 12 and 24?
-  An individual or part of a group that needs money to help you make an event, trip, project, course, training opportunity etc happen?
-  Prepared to come and talk and tell us about it to see if you are eligible?

If you have answered yes to these questions, then the Clutha District Youth Council might be able to help. The Youth Council has set up a \$2,000 annual fund that aims to help young people in our district. The project/activity should not have started before 1 July 2021.

For more details and an application form, go online to [www.cluthadc.govt.nz](http://www.cluthadc.govt.nz) or ring 0800 801 350.

**Applications close Friday 28 May 2021**



Clutha District Council



## Public Notices

### Genesis Advertising

Contact the Genesis Office for more information about advertising.  
Advertisements start at just \$7.00, and can be run weekly, fortnightly or monthly. If you need help creating an ad - just ask!!

### Milton Country Club Spud Dig

1pm  
Saturday 27th March  
At the club



### TEMPORARY ROAD CLOSURE

Clutha District Council

PURSUANT to the Local Government Act 1974, Schedule 10 (clause 11), Notice is given that the Clutha District Council, for the purpose of a Motor Bike Trail Ride, proposes to close the following roads to ordinary vehicular traffic for the period indicated hereunder.

**DATE: 28th March 2021**

Road:	Time:
Jensen Road	9:30am to 2.00pm

It will be an offence under the above regulations for any person otherwise than under authority of an authorised permit to use the road for ordinary vehicular traffic during the period of closure. We apologise for any inconvenience this may create for the travelling public.

Steve Hill  
CHIEF EXECUTIVE

## Beauty Services

Beauty By   
The Country

Open Monday to Friday,  
Saturdays by request.

Book at Beauty by the Country on  
Facebook, Instagram or Fresha.com

## Beauty Services

Offering a range  
of Beauty Services  
from Waxing to  
Facials, and  
everything in  
between.

91 Falla Burn Road  
Just 10km from Milton on SH8

Phone or text Nicole on  
027 817 7649

## Trades & Services

## Trades & Services



**Leishman Funeral Services Ltd**

Locally owned and community focused

- Funerals & Memorial Services
- Respectful Direct Cremations
- Family Graveside Ceremonies

- Chapel & Lounge
- Urns
- Wood Finished Caskets
- Paint Finished Caskets
- Woollen Caskets (NZ Wool)
- Hand-painted Caskets
- Engraving Trophies
- Watch Batteries



Phone 03 418 2814 | Balclutha & Milton  
[www.leishmanfunerals.co.nz](http://www.leishmanfunerals.co.nz) | [office@leishmanfunerals.co.nz](mailto:office@leishmanfunerals.co.nz)

# Genesis Classifieds ...

## Church Services

## Church Services



### Tokomairiro Co-Operating Parish

Sunday 28th March - Palm Sunday Service.  
Waihola 9am, Milton 10:45am

Thursday 1st April - Maundy Thursday  
Combined Service at Waihola - 7pm

Friday 2nd April - Good Friday  
Combined Service at Milton at 9:30am.  
Hot Cross Buns and a Cuppa to Follow  
*All Welcome!*

## MOUNT ZION CHURCH

Sunday Service - 10am  
*All Welcome!*

110 Union Street

For information - follow us on Facebook - 021 249 6312

## Trades & Services

## Trades & Services

### WATER SERVICES



### PLUMBING

YOUR PLUMBING GAS AND  
DRAINAGE NEEDS COVERED

Local Registered Plumber,  
Gas Fitter  
& Drainlayer

2021 Specials on  
Gas Hot Water

Baz Rogan  
020 4141 0164

f @waterservicesplumbing

Email: bazroganwaterservices@gmail.com



Ph / Txt 027 433 7813

Farmers, after 30+ years we know  
Shearing and Wool Harvesting inside out.

It's what we do & what we love.

*Set The Scene*

*Right People*

*Right Attitude*

Our Tokomairiro & Lawrence teams are  
available to help

## Trades & Services

## Trades & Services

*For all your electrical needs!*

✓ Residential ✓ Commercial ✓ Industrial



localelectrical

**CALL Matt Lyon**

Registered Electrician

027 677 9007

localelectricalmilton@gmail.com



**MARSHALL  
ELECTRICAL**

Registered Electricians and Inspector

- New homes and alterations
- Whiteware
- Freeview and TV
- Heat Pumps/Air Conditioning
- Industrial and Commercial
- Farm and Dairy Sheds
- Wiring Reports
- Phone and Data

Daniel 027 8255 885  
After Hours 03 417 8370  
mpelectrical@xtra.co.nz  
26 Union Street, Milton



**Electrical  
Laser**

General Electrical Installation & Maintenance

Commercial & Domestic

Heat Pumps / Air Conditioning

Refrigeration

Waikato Milking Systems

Water Pumps

Dairy Plant Maintenance & Conversions

24 Hour On Call Service

03 417 8010





# Genesis Classifieds ...

## Trades & Services

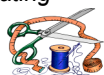


FOR ALL YOUR

### SEWING NEEDS

- mending, alterations, making and creating -

Give Ann a call  
03 417 4187 or  
027 417 3045



## Pet Services

### SHAGGY to SLEEK



#### Dog Grooming Service

Phone Robyn 027 359 1144 to book an appointment or email: shaggytosleek@gmail.com

### THE KENNELS

Welcomes all Dogs large and small Individually kennelled with underfloor heating.

Contact Leigh-Anne kennelsmilton@gmail.com  
03 417 4262 027 5332 064

## Trades & Services

### The Plumbing Company

- Plumbing
- Drainage
- Gasfitting

Contact: Warren Tait  
Phone: 417 8453  
Mobile: 027 489 0065  
Quality service and value

### Ryan Plumbing

Plumbing ~ Drainage ~ Sheet Metal Work  
Contact:  
Pete 027 480 2067

### Dr. Fix-it

For All Home-Tech Service & Repairs, Security & Cameras Low Hourly Rates Senior Discounts  
Call 022 516 7729



## Trades & Services

### MR AND MRS LAWNS

Angie and Darren Prompt and Reliable Husband and Wife Team "Ride on mowing available"  
Phone 03 417 8074  
0210 224 0471



### Lawns,

Hedges, Trees Spraying, Water Blasting, spouting etc



Phone Wayne 417 8962

### Fast Cutz Lawn Care

- Lawns & Edges
- Green waste Removal
- Reliable Service with Great Care

\$25 per hour (medium sized lawn) in Mosgiel and Milton areas.  
\$15 per hour in Waihola  
Ph: 027 4538 798

Become an Upstander Report Bullying



upstander@tokohigh.school.nz

## Health Services

### MILTON MEDICAL CENTRE

#### Medical Centre

Hours Monday-Friday 9.00am- 5.00pm.

#### After Hours Service

To access our After Hours Service please phone the medical centre on (03) 417 8226. Your call will be diverted to our after-hours triage service "Homecare Medical" where a registered nurse will provide you with advice and assistance.



### YES!!!

We are still happy to treat your ACC injuries.

Co-payment charges only \$15.

For appt: 03 417 7066



### BSafeT Ltd Health & Safety Consultants

\*Weekly/fortnightly service  
\*Expert, qualified advice & support.

Contact Bob Treymane 021 182 0027

Protect yourself and others from COVID-19



Proudly supported by



MILTON

## MILTON GUTBUSTER & FAMILY TRAIL RIDE



March 28, 2021

8:30am onwards

137 Cullen Road Clarendon, Milton



3 tracks + Advanced Sections

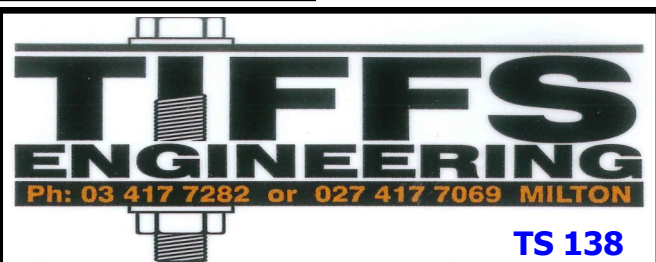
- Bikes - ATVs -
- Side-by-sides -

ADULTS \$50,  
JUNIORS \$25  
PEEWEEES \$10



Milton Gutbuster and Family Trail Ride

You've done the rest...now come and try one of the best!



### TS 138

Husqvarna Series Locin Engine - 4.7hp, 452cc, 38" cutting width User-friendly lawn tractor with foot pedal operation, side ejection cutting deck, and a powerful engine to tackle smaller blocks.

General Engineering Hydraulics Mowers Chainsaw Sales and Service