



Tokomairiro High School Newsletter & Community Noticeboard

Wednesday
20th July 2022

Genesis

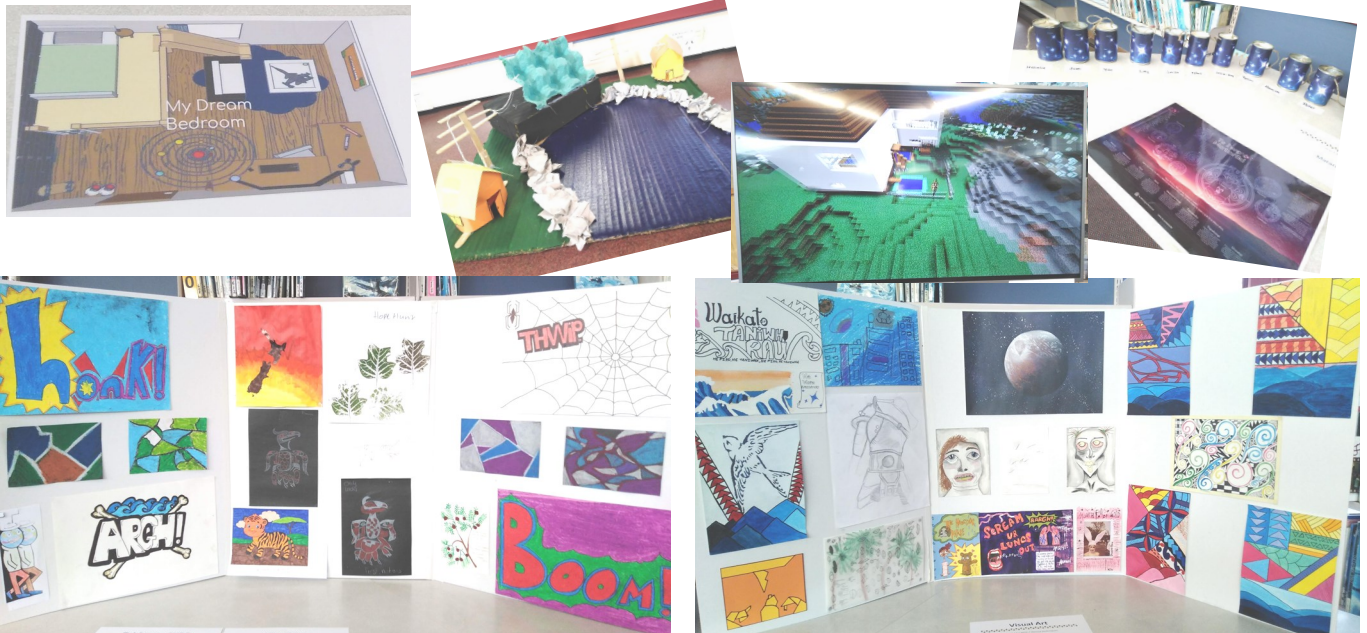
238 Union Street
MILTON
T: 03 417 4483



E: genesis@tokohigh.school.nz

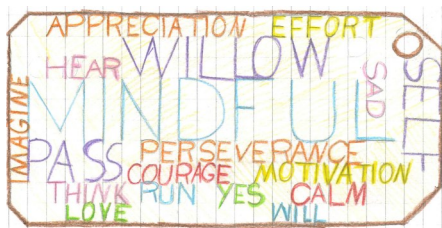
Tokomairiro Expo

In the last week of term, families/ whanau and friends were able to visit the Tokomairiro Expo which was held in the school library. The Expo included samples of students work from a range of subject areas including Art, Science, Digital Technology, Hard Materials, Maori and English. The main goal of the Expo was to share and present the creativity of our students and was an opportunity to celebrate what has been made at school, giving students a purpose for their activities and a chance to contribute to the wider school community.



Year 7 and 8 Graphics

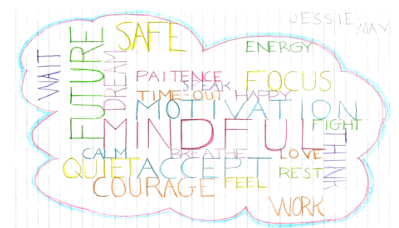
Last term, the Year 7 and 8 Graphics class did a project on using visual communication to create a word map on mindfulness. Below are a few of the images that they produced.



Lilly



Olivia



Jessie-May



Bronson



Peter



Dahli

superValue Milton *Weeklies*

**SuperValue Milton: 59 Union Street, Milton
Ph 417 8008. Open 7am - 8pm, 7 days.**

Prices valid 18th - 24th July 2022, or whilst stocks last.

\$280
kg



Dole Bobby Bananas 850g
(Product of Philippines)

\$16⁵⁰
kg



Fresh Lamb Leg Roast
(Product of NZ)

WDL-513-5VGN0007

Year 11 Descriptive Writing

The Farm - by Wyatt Mallon

Before we moved into the farm about six years ago, the land was a big patch of rolling dry hills, separated into four different paddocks by a rusty looking fence and tall hedges of pine. Gum trees decorated a rugged clay driveway that led to an old makeshift shed made of rusty sheets of metal. The house was about twelve metres by six metres. Entering the garage there was bird crap everywhere, enough to make you think it had snowed, and dried mud making up most of the floor. Inside the house, there were stone stairs that led to a long faded white kitchen and a living room. In the living room sat a large dusty couch that had been chewed up by mice. A large, faded paper map showed the whole Milton area. Beside the map, a fireplace nestled in the corner. The wallpaper had peeled off the wall and the roof was decorated with cluster flies and holes left by the mice. Back downstairs was a door that led to a poorly lit bathroom crawling with spiders. There was a sink, a toilet and a shower, all a sickly yellow due to age. The walls had crumbled revealing the insulation and timber frame. There was no bedroom in the house; maybe it was used as a hut instead of a full livable house. Apart from the old house, the farm was empty with a few water troughs and an old crooked looking shearing shed scattered about.

Today the farm is lush with green grass and flourishing with native kanuka trees, poplars and flowers like calla lilies, buttercups and daffodils that

decorate the fence line. The fences are uniform, tidy and shiny, and the driveway has had some fresh new gravel graded along it. The large hedge of pines have been trimmed, and a couple of them have been chopped down. Twelve woolly sheep populate the farm roaming around in a herd and grazing at the luscious grass. The rusty house still stands in the same place but now is used as more of a storage shed for all the dusty duck decoys to lie in, awaiting the duck season. Beside the house, a small concrete cylinder stands which is used as a killing shed, and a little further on than that is a large pile of firewood and kindling.

A large steel shed has been erected in the middle of the farm used for a workplace, for storage and most importantly, a house. Three large roll up doors align the front of the shed. Pull them up and you'll gaze upon a large concrete floor used to house two cars and a medium sized family boat. Past that is a large shelf used for holding anything that'll fit and a work desk. On the other side of the shed is a washing machine surrounded by stinking sweaty laundry and the main door. Inside the house a nice creamy partly mustard paint lights the walls up, the floor is hard cold concrete and the roof is a gentle white colour. Three other doors and a staircase sit past the main door, one to the toilet, another to the bathroom and the last one leading to the living room and kitchen. The last door leads to a spacious, warm kitchen and lounge laid with carpet and comfy marshmallow furniture, inviting you in with the faint smell of baking coming from the maple white oven.

In only six years, the farm has transformed from a wasteland that had been forgotten about to a warm, tidy and inviting place filled with a cheeky, fun family that call the farm home.

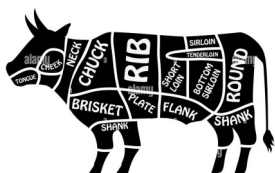
Tiny's Milton Butchery



112 Union Street
Milton
Ph 417 8223

Specials

Due to staff shortages,
there will be
in-store specials only
this week.



Visit us on our website
www.miltonbutchery.co.nz
or our Facebook page!

Sports Round Up

FIXTURES



HOCKEY

25/7 Toko Wāhine 1st XI vs. OGHS B | 5:00pm | LFT
26/7 Toko Tāne 1st XI vs. LPHS 1st XI | 5:00pm | LFT
29/7 Toko Tāne 78 vs. St JHC | 4:50pm | OPT
29/7 Toko Tāhine 78 vs. SP Mixed Red | 5:40pm | OPT

NETBALL

22/7 Toko Gold vs. SOHS Green | 5:00pm | Clutha 4
30/7 Toko Snr A vs. SHCS Sapphires | 1:00pm | Edgar 18

Genesis Advertising

For more information about having an advertisement created especially for your business or organisation at no extra cost, or details on sizes and pricing, please email the Genesis office at: genesis@tokohigh.school.nz, or phone 03 4174483

Dates to Remember...

Monday 25th July
Term Three Begins

Tuesday 26th July
Sports Photos

Monday 1st August
Tertiary Open Day
Senior Students

Thursday 4th August
Heights Safety Course
Senior Students

Friday 26th August
Accord Day



- Beauty Services available in Milton
- Located at Black Lotus Hair Studio
- Go to 'Inked Beauty Milton' Facebook page to book online, or call/text Wendy for an appointment on 027 286 8953

Genesis

The Genesis is a free publication, delivered weekly to homes and businesses in Milton and Waiholā, and is available on the school website, Facebook or via email. The Genesis office is open Monday and Tuesday 8:30am - 3:30pm. If the office is unattended, any articles, advertising or payments can be taken to the school office or left in the secure box in the office door.

Genesis Deadlines: Advertising - Monday 9am, Articles - Monday 12 noon. Articles/ advertisements can be emailed to the Editor at genesis@tokohigh.school.nz. Genesis is delivered FREE to your letterbox from Tuesday 4pm to Thursday 6pm.

Any payments or donations can be made to Tokomaiiro High School, account number 03 1736 0009803 000. Please use GENESIS and your name as reference. - Carolyn Shanks, Genesis Editor

RSA News From the Trenches



Don't panic, I'm back from my undercover mission which was hugely successful, but clearly from reports that I've had, my lack of a report last week has caused major disruption - and no that's not the name of the person in charge!!!

But I digress, this week kicks off yet another highly anticipated Sports Tipping Comp, with another large number of entrants chomping at the bit to knock Snow Cowie off his perch as King of the Tipsters. Still got a chance to enter, but you better be quick, as it commences this Friday. There won't be any netball games to decipher this time, so that should ease the stress of some competitors.

Now the membership draw is continuing to rise with last week's unlucky recipient Nelson Taal not quite being there to claim his prize of well over \$300 going for another week. Also due to the All Black bumbling performances even though a few members backed Ireland, the Pick the Score jackpot still hasn't been struck, so next AB home game the jackpot is up for grabs. This will coincide with our next Wild Food Festival at the end of August - which is not that far away. See you down at the RSA.

- Private Pike

Bridge

Toko Champs 21st July 2022



R Devlin / J Turnbull	65.00%
K Powell / A Phillips	58.75%
T Tetlow / L Clark	51.25%
T Morland / J Scott	45.00%
J Walker / A Broome	45.00%
M Cain / C Harrex	35.00%

Milton Country Club News

So the rugby picks all wound up last Saturday night and it was a fun-filled evening once again. Congrats to Simon Partridge who won top honours followed by Phill Roulston and Gregg Findlay, it's a bit like the chase and if you think you can beat Simon then come and have a go.

Last month we had our first Jam Session which was well received and we will be having them on the first Friday of the every month at 7pm so come along and join in. Our Friday night raffles are flying out the door and our lucky Joker is now at \$1400 so come on down and be into win. Remember we have our lounge bar available for hire for any functions for all our community. Check out our website for more info.

Annual memberships are now due and we have had a lot of new members recently. It is great to see so many younger members of our community joining up. Don't forget the Mercury Rising Evening on the 20th August, this will be a night not to be missed and tickets are available at the club, so get in quick. Until next time See you at the club!

Genesis Articles and Reports

The Genesis relies on articles and reports supplied by the community to fill our pages.

Please email these to genesis@tokohigh.school.nz so we can share events in our area. We try our best to publish articles on the week provided but due to space restraints we are not always able to. If your article is not printed in the week submitted, our goal is to publish it in the next Genesis issue.

Bible Reading for the Week

'For the Lord watches over the way of the righteous, but the way of the wicked leads to destruction'

Psalm 1:6

Genesis Classifieds ...

Church Services

Church Services



Tokomairiro Co-Operating Parish

Sunday 24th July

9:00am at Waihola Community Church.

10:45am at Milton Church Hall

All Welcome

MOUNT ZION CHURCH

Sunday Service - 10am.

All Welcome!

110 Union Street

For information - follow us on Facebook - 021 249 6312

Public Notices

Public Notices



Tokomairiro Co-Operating Parish.

We are giving away

FREE bags of Potatoes



this Saturday, 23rd July from 10am - 12noon in the Car Park beside the Big Heritage Church on Union Street. Bring Along Your Bags and Boxes.

ALL WELCOME



Park Road MILTON

Ph 03 417 4458 or 027 559 9899



FIREWOOD



Ute load \$30

Garden trailer \$30 - with cage/extensions \$40

Tandem trailer \$40 - with cage/ extensions \$50

Contractors trailer \$50 - with cage/ extensions \$60

Lengths .400- .800m

*No chainsaws to be used on site. Load your own trailer.

Available weekdays from 12pm - 4:30pm



Sumpter Moore –Barristers & Solicitors

Quote of the week:

'I don't want any yes-men around me. I want everybody to tell me the truth, even if it costs them their jobs' Samuel Goldwin (1882 -74)

For all your legal requirements, contact our friendly team at

5 Eden Street, (PO Box 16) Milton.

Phone (03) 417-8004 Fax (03) 417-8002

Genesis Classifieds ...

Situations Vacant

Situations Vacant

Situations Vacant

Situations Vacant

Waitahuna School

Principal Release Teacher

Our small rural school is on the lookout for a part-time permanent teacher (FTE 0.3) to become part of our team.

We need someone who is flexible, inspiring and fun.

This position is in a multi-level classroom.

If you are a teacher that focuses on building relationships, celebrates success and empowers your students to be their best, this position is for you.

For an application pack and/or enquiries, please email

Sue Homer (Admin/ Secretary) at

waitahunaschool@xtra.co.nz

Applications close at 3:30pm on Friday, 29th July 2022



BUILDER / INSTALLER / GLAZIER

We are seeking a hardworking, motivated individual to join our team in a full-time, permanent role to install windows and doors, both new builds and replacement joinery, and also retro and site glazing. Experience in the building trade is essential.

The successful applicant would possess the following:

- Strong attention to detail and a high quality of workmanship
- Reliable
- Work well within a team environment
- Good communicator
- Physically fit (heavy lifting required)
- Full drivers license
- Have a positive attitude and be able to work unsupervised

You will be expected to perform the following:

- Complete allocated work within the time required
- Install as per the New Zealand Building Code
- Confident using hand tools and power tools
- Complete work as per job sheets in accordance with the production schedule

Employment will be offered subject to a pre-employment drug check.

Applicants for this position should have NZ residency or a valid NZ work visa.

Please apply with your CV and a cover letter to laurence@sowd.co.nz or phone 027 417 8264 for more details.

Love your view



Clutha Youth Worker

- Exciting opportunity for a talented Youth Worker
- 30 hours per week, permanent role based in the Clutha District
- Some flexibility around working hours as this may include evenings and occasional weekend work for significant youth events

This is a diverse role where no day will be the same. We are looking for someone who is inspired by positive change in our rangatahi. You will also be working with the Clutha District Youth Council and the Community Support and Development Advisor to identify the needs of rangatahi in the community.

In the position, you will:

- be involved in a wide variety of youth work including 1:1 mentoring, facilitating group work sessions, after-school/out-of-school programmes, and youth events.
- demonstrate a positive outlook and provide our clients with exceptional service.
- have a can-do attitude and the ability to self-direct your workload.
- be adaptable, flexible, and bring a vibrant energy to the position.

Previous experience working within the youth sector would be ideal and a Diploma in Youth Work would be an advantage.

As technology is a vital component of our everyday operations a good understanding of the Microsoft Office suite, Google, and social media platforms will be required.

The Malcam Charitable Trust works with rangatahi/youth aged 12-24, who have disconnected with their education pathway, employment, their whānau and/or their community. Our vision is to empower rangatahi to take on their next goals in life and become valued members of their communities.

The successful applicant will be supported with any necessary training and ongoing development opportunities that the position will require.

Applications close on **31 July 2022** and must be made via email accounts@malcam.org.nz. Please include a cover letter and curriculum vitae.

For a copy of the job description, please contact Mandy de Leeuw via email accounts@malcam.org.nz or phone 03 477 4175.

To Lease

To Lease

Storage Units Available

Located in Milton from 14.4 m³ to 34.5m³

From \$35 per week.

Phone 027 417 8264



**GARRY
MILNE**



PANELBEATING
South Otago's Leading Structural Repair Centre

Specialists in

- Plastic Welding
- Rust Repairs
- Wheel Alignments
- Over 34 years experience
- Chassis Straightening
- Courtesy Cars Available
- Alloy Welding Available

Latest investment spot
welder and 3D
measuring system
for use on late
model vehicles

**Free Pick up and
Delivery, Milton
& Balclutha**

Approved repairers for:



Genesis Classifieds ...

Pet Services

SHAGGY to SLEEK 

Dog Grooming Service

Phone Robyn 027 359 1144 to book an appointment or email: shaggytosleek@gmail.com

Trades & Services

 **FOR ALL YOUR SEWING NEEDS**
- mending, alterations, making and creating -

Give Ann a call
03 417 4187 or
027 417 3045 

Trades & Services

For all your electrical needs!

✓ Residential ✓ Commercial ✓ Industrial

 **CALL Matt Lyon**
Registered Electrician

027 677 9007
localelectricalmilton@gmail.com

Trades & Services

Genesis Deadlines
Advertising - Monday 9am,
Articles - Monday 12 noon.

Phone: 027 864 6828 

Email: ipaintdunedin@gmail.com

- Free no obligation quotes
- Waterblasting for buildings, concrete footpaths and driveways
- Painting and decorating
- Airless spraying
- Residential and Light Commercial

Trade Certified Painting and Decorating Services

 **MARSHALL ELECTRICAL**

Registered Electricians and Inspector

- New homes and alterations
- Whiteware
- Freeview and TV
- Heat Pumps/Air Conditioning
- Industrial and Commercial
- Farm and Dairy Sheds
- Wiring Reports
- Phone and Data

Daniel 027 8255 885
After Hours 03 417 8370
mpelectrical@xtra.co.nz
26 Union Street, Milton

 **Brian Ballantyne**
Senior Consultant
027 343 2933
brian@otagohealthsafety.co.nz
www.otagohealthsafety.co.nz



OTAGO HEALTH & SAFETY LTD
EVERYONE HOME SAFE & WELL EVERYDAY

TOKOMAIRIRO, THE BIRTH PLACE OF UNIFONE!

Need a high quality, fast internet service?
We have extensive rural wireless services across the area, and our town connections are functioning through the brand new fibre network.

We're locally owned and operated - contact our friendly team today and we'll get you sorted.

Unifone 0800 894 114
unifone.net.nz

 **Electrical Laser**

General Electrical Installation & Maintenance
Commercial & Domestic
Heat Pumps / Air Conditioning
Refrigeration
Waikato Milking Systems
Water Pumps
Dairy Plant Maintenance & Conversions

24 Hour On Call Service
03 417 8010

Genesis Classifieds ...

Trades & Services



Daza's Garage

168 Union Street, Milton 417 8171



Call us for all your automotive servicing and repairs,
NZTA Warrant Of Fitness inspections and Auto Electrical parts.
- Mobility Scooters -

Come & check out our

"Museum Quality Industrial Diecast Models"
at Daza's Diecast container shop! (Open Weekdays)
All models are listed on our website.



Dazasdiecastnz
Daza's Garage

www.dazasdiecast.co.nz

Trades & Services

The Plumbing Company

- Plumbing
- Drainage
- Gasfitting

Contact: Warren Tait
Phone: 417 8453
Mobile: 027 489 0065
Quality service and value

Health Services

MILTON MEDICAL CENTRE

Medical Centre

Hours
Monday-Friday
9.00am- 5.00pm.

After Hours Service

To access our After Hours Service please phone the medical centre on (03) 417 8226. Your call will be diverted to our after-hours triage service "Homecare Medical" where a registered nurse will provide you with advice and assistance.



YES!!!

We are still happy to treat your ACC injuries.



Co-payment charges only \$15.
For appt: 03 417 7066

LEISHMAN FUNERAL SERVICES
SOUTH OTAGO 03 418 2814

Leishman Funeral Services Ltd

Locally owned and community focused

- Funerals & Memorial Services
- Respectful Direct Cremations
- Family Graveside Ceremonies

- Chapel & Lounge
- Urns
- Wood Finished Caskets
- Paint Finished Caskets
- Woollen Caskets (NZ Wool)
- Hand-painted Caskets
- Engraving Trophies
- Watch Batteries

Phone 03 418 2814 | www.leishmanfunerals.co.nz

Balclutha & Milton | office@leishmanfunerals.co.nz

Ryan Plumbing

Plumbing ~ Drainage ~ Sheet Metal Work
Contact:
Pete 027 480 2067

Lawns,

Hedges, Trees
Spraying, Water
Blasting, Spoutings etc



Phone Wayne
417 8962

MR AND MRS LAWNS Angie and Darren

Prompt and Reliable
Husband and Wife Team
"Ride on mowing available"

Phone
0210 224 0471



Trades & Services

Dr. Fix-IT

TV's, PC's,
WiFi & HiFi
Service & Repairs,
+ Security Cameras
Low Hourly Rates
Senior Discounts



Call 022 516 7729

WINTER SERVICE SPECIAL

15% Discount
Applies to all
lawnmowers



Free pickup and
delivery in Milton

Stihl Shop Milton
101 Union Street
Milton
03 417 8959
www.stihlshop.co.nz

STIHL SHOP

LOVE YOUR LAND

Ph: 03 417 7282 or 027 417 7069 MILTON

RRP NOW

\$319

incl GST

Whiteware no longer being accepted

Petrol Chainsaw HUSQVARNA 120 Mark II
Cylinder displacement, 38.2 cm³, Power output 1.4 kW

**General Engineering Hydraulics
Mowers Chainsaw sales and service**