

Tokomairiro High School

Milton - New Zealand





TOKOMAIRIRO HIGH SCHOOL



MILTON, NEW ZEALAND

Principal's Message

To Parents, Caregivers and Students

Kia ora koutou

I am pleased to welcome you to our school through this prospectus.

Tokomairiro High School is a state co-educational secondary school for students from Year 7 to Year 13. Our school motto – *Disciplina* (learning), *Moderatio* (self-control), *Comitas* (courtesy), handed on from the founders of our school, still provides the base of our school values. The “Tokomairiro Way” values of Respect, Responsibility and Excellence underpin all we do.

Positive relationships between students, teachers and whanau, are the basis of how we work at Tokomairiro High School. We focus on an environment where all students can strive for personal excellence, can make progress in their learning and feel supported in a safe environment. Restorative practices are our focus when there has been a break-down in relationships.

Our mission statement is “working together to inspire excellence in education, in character and in life.” Communication with parents and whanau, and the wider community, is an essential element in achieving this mission. We welcome parents and whanau into our school and look forward to working with you to support the learning of your young one.

We are proud of our school, our students and our community. We look forward to sharing our school with you.

Nga mihi

Glenis Sim
Principal

Contents

History of the School	2
Curriculum	3
Course Selection	4
Uniform & Grooming	5
Facilities	6
Opportunities	6
Extra- curricular Activities	7
Preparing for your Future	7
Sport	8
Outdoor Education	8
Caring for our students	9
Our Code of Conduct	9



History of our School

In 1966 our modern day school replaced the existing District High School which had its roots in the first school opened on the Tokomairiro Plain in 1856, and our state co-educational high school catering for students Year 7 to Year 14, was the first of its type in the lower part of the South Island.

Our school's name is derived from pre European times. The Tokomairiro Plain was a wetland area fed by the Tokomairiro River as it made its way from the hills to the Pacific Ocean. The early Waitaha people who arrived in the area about 445 A.D. travelled the water ways in bullrush (raupo) canoes (mokihi), which were propelled by poling. The Kati Mamoe (Ngati Mamoe) who followed them and then the Kai Tahu (Ngai Tahu) who came in the late 1700s also poled canoes through the wetland. This history is captured in our school crest.

Today Tokomairiro High School is a Year 7 to Year 13 school, situated in Milton, which is on State Highway One, about 55 kilometres south of Dunedin.



We serve the Tokomairiro District. This covers from Lake Waihola in the north, to the coast south of the Taieri River in the east, Lovells Flat in the south, to the Manuka Gorge on State Highway 8 in the west. Milton, which has a population of approximately 2000, is roughly at the centre of the district. The surrounding area is rural in character, with several small townships. This district, as a whole, supports a population of about 3500 people.



The community is employed mostly in farming and forestry industries and their associated services. We have a boat building industry (McLay Boats Ltd), and the headquarters for a major construction and development company (Calder Stewart Industries). Several sawmills operate in the district. A number of people also commute to jobs in Dunedin and Mosgiel, and Balclutha (to the south).

Milton is well served with a variety of facilities, including a heated swimming pool, public library, community recreation centre/gymnasium, physiotherapists, a well-staffed medical centre, police station, primary schools, day care centres and kindergarten.

Tokomairiro High School aims to provide the highest possible educational opportunities to meet the needs of our students and community. We take a balanced and holistic approach to education as well as providing extracurricular opportunities.

The Tokomairiro way is reflected in all dimensions of school endeavour through a nurturing and challenging environment that allows students to develop to their full potential.



Curriculum

What We Offer

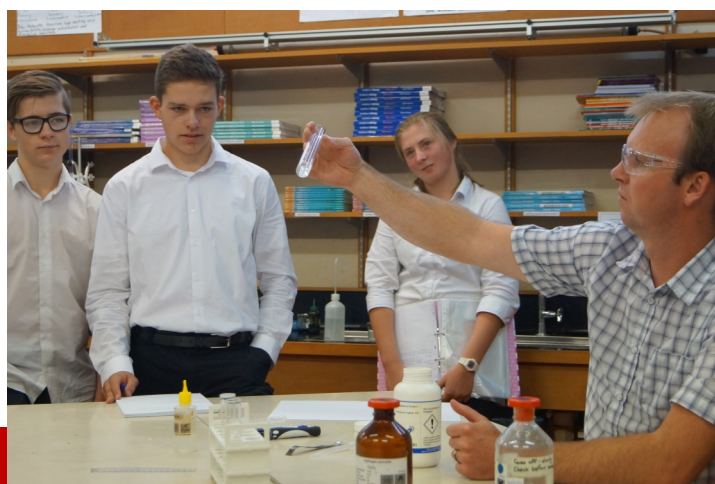
On the chart opposite, you will see the curriculum covers the essential learning areas of the National Curriculum.

The programme from Years 7 -10 is designed to provide a balanced general education and a variety of subject experiences needed to make wise subject choices in the senior school. To help students transition from primary to secondary school, Year 7 students are in a home room setting with one teacher for several key subjects; this is continued into Year 8 in a modified form.

The curriculum in the senior school, Years 11 – 13, is designed to lead students towards National Qualifications at each level. Our students receive excellent preparation for University and Polytechnic courses, and endorsement in several vocational pathways which lead directly into careers.

- ♦ classroom learning environments plus new technologies
- ♦ eLearning opportunities - study any subject under the sun online, with video conference support, or by distance learning
- ♦ alternative courses in English and Mathematics at Years 11,12 and 13
- ♦ Open Polytechnic courses/Secondary Tertiary Pathways.
- ♦ Vocation specific course - Manufacturing and Technology, Construction and Infrastructure, Primary Industries

It is our aim that all students leave with useful and nationally recognised qualifications, and that students are placed in courses where they can succeed. In addition to gaining certificates at levels 1, 2 and 3 of NCEA, students can gain endorsement in vocational pathways, above.



Course of Study	Year 7 - 10	Year 11	Year 12	Year 13
English	English (in Homeroom in Year 7/8)	English	English VMC	English VMC
Languages	Other languages (French, Maori) ESOL	Other languages ESOL	Other languages ESOL	Other languages ESOL
Mathematics	Mathematics	Mathematics Foundation Mathematics	Mathematics Applied Mathematics	Mathematics with Calculus Mathematics with Statistics Business Mathematics
Science and the Environment	Science	Science Agricultural Science Horticulture	Biology Chemistry Physics Agricultural Science Horticulture	Biology Chemistry Physics Agricultural Science Horticulture
Technology	Digital Technology Materials Technology Food Technology Workshop Technology Graphics	Digital Technology Food Technology Hard Materials Technology Graphics	Digital Technology Food Technology Hard Materials Technology Graphics	Digital Technology Food Technology Technology Graphics
Social Sciences	Social Studies (Homeroom in Year 7/8) Year 9/10 includes elements of Economics	Geography Humanities Economics	Geography Humanities	Geography Humanities
The Arts	Music and Dance Art Drama	Art Drama Music	Art Drama	Art Drama
Health and Well-being	Physical Education Health	Physical Education Health	Physical Education Health	Physical Education Peer Support Health
Work Experience	Careers	Careers Gateway	Careers Gateway	Careers Gateway
Online Learning (Dependent on availability)		Accounting , Economics, Agriculture, Languages, Psychology, Media Studies, Aeronautics, Aquaculture, Viticulture, Zoology, Business Studies		

Course Selection

All strands are compulsory in Years 7 - 10. Within the strands, a choice may be made of languages other than English.

A detailed senior course booklet is provided at mid-year to help students in Years 10, 11 and 12 choose their subjects for the following year.

To help in these choices, an Options/Careers evening is held for students and parents. Heads of Departments, subject teachers, the Careers teacher and the Senior Dean are all available for advice and consultation.

However, the choice today is almost limitless, due to our school's commitment to using new technologies, such as eLearning, video conferencing, where students from Tokomairiro work with students from other high schools and can have face-to-face discussions with them and the teacher. They are also able to email this teacher between sessions, and have personal tutorials organised.



Uniform and Grooming

Each student must be neatly dressed with the correct uniform and footwear. The school's aim is to encourage and develop self-respect and pride in appearance.

It expects parents to support and supervise the wearing of the school uniform and to insist on the highest standards of dress and grooming.

The school, at all times, reserves the right to decide whether standards of personal dress and grooming are acceptable and to take appropriate action when standards are unsatisfactory.

Top Layer: Option of soft shell jacket or blazer (hired from school).

Pullover: Option of Back Road jersey, vest and merino jersey,

Shirts: Option of ladies shirt, men's shirt - long or short sleeved (navy with white check) or polo top (navy with yellow monogram).

Bottoms: Option 1: Plain black shorts; available in men's or ladies fit.

Option 2: Plain black trousers; available in men's or ladies fit.

Option 3: Plain black skirt.

Optional: Tie, Cap, Beanie (with school logo)

Shoes: Plain black lace up shoes. Plain black sandals may be worn in summer.

Socks: Plain black or white socks.

Tights: Plain black tights only.

Winter Jackets: Plain navy or black winter jackets are allowed but must be removed in class.

Jewellery and make up (optional): May be worn discreetly. This might need to be removed for safety reasons.

Grooming: Hair must be clean and tidy. Longer hair might need to be tied back for safety reasons. Facial hair must be tidy and well groomed.

What is acceptable for school is similar to what would be considered tidy casual for a workplace and is at the discretion of the Principal.

Uniforms can be purchased online through NZ Uniforms or visit their shop in Dunedin (342 Moray Place - opposite the Countdown carpark). We have a full set of uniform at school for students to try on before ordering.



PE/Sports Kit

In physical education there is a compulsory uniform of shorts and top.

This uniform is used for most sports teams too.

The uniform is purchased through the school at certain times of the year.

Cost

Sports Top - \$45.00

Sports Shorts - \$32.00



Facilities

“Our School has excellent modern facilities”

- ◆ 1-1 devices
- ◆ Every classroom has access to information technology, email and internet
- ◆ A large Library with email, internet and copying facilities
- ◆ Extensive Art room with kiln
- ◆ Assembly hall with attached Music room and practice rooms
- ◆ Gymnasium and fitness centre
- ◆ Workshop Technology block, including Design Room
- ◆ Food Technology suite
- ◆ Horticulture room with adjacent garden, shade house and greenhouse
- ◆ Learning Support Centre
- ◆ Modern classrooms with breakout spaces
- ◆ Canteen
- ◆ Extensive playing fields, netball, tennis courts, artificial turf and cricket nets.



Opportunities

“Our School encourages leadership”

You can become:

- ◆ Student representative on Board of Trustees
- ◆ Student representative on PTA
- ◆ Student Council representative (two per class)
- ◆ Prefect
- ◆ Bus Prefect
- ◆ Head Boy/Head Girl
- ◆ Peer Support Leader
- ◆ Librarian
- ◆ Canteen Helper
- ◆ Houses Leader
- ◆ Team Captain
- ◆ Genesis Reporter (school newspaper)
- ◆ Kapa Haka Leader
- ◆ Waiata Leader
- ◆ Sports Umpire
- ◆ SADD Representative
- ◆ Sports Council Representative
- ◆ Peer Mediator
- ◆ 40 Hour Famine Organiser
- ◆ Health Team Member
- ◆ Homework Tutors



Extra-curricular Activities

“Our School encourages involvement in extra-curricular activities”

These include:

- ◆ Debating and Public Speaking
- ◆ Spirit of Adventure
- ◆ Shakespearian Festival
- ◆ Science fairs
- ◆ Australian English, Mathematics and Science competitions
- ◆ Outward Bound
- ◆ School Ball
- ◆ School Camps
- ◆ Class Trips
- ◆ Ski Trips
- ◆ School productions
- ◆ Speech and Writing Competitions
- ◆ Interschool exchanges
- ◆ Athletics competitions
- ◆ Kapa Haka group
- ◆ Waiata group
- ◆ School Band
- ◆ School Choir
- ◆ Tramps
- ◆ Sports Council
- ◆ Activities week for Year 7 -10
- ◆ Youth to Everest
- ◆ Elwing Sailing
- ◆ Polyfest



Preparing for your Future

Our school offers an excellent transition education programme. Career support is offered by our Careers teacher, and includes:

- ◆ Timetabled Careers classes in Years 11 to 13
- ◆ Curriculum vitae preparation
- ◆ Careers advice and information – all year levels
- ◆ Careers evenings
- ◆ Tertiary Education evenings
- ◆ Work exploration
- ◆ Work experience
- ◆ Gateway programmes
- ◆ Open Polytechnic courses
- ◆ Visits from University and Polytechnic Liaison officers
- ◆ Visits to University, Polytechnics and halls of Residences on open days
- ◆ Job-seeking skills
- ◆ Personal presentation and grooming

Sport

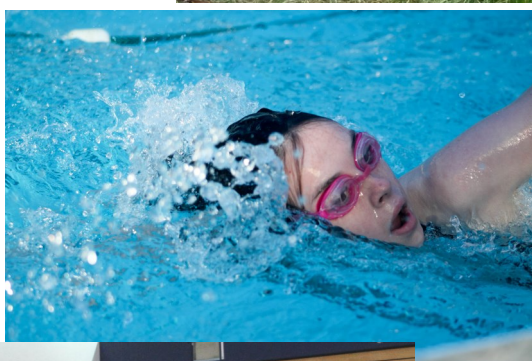
We encourage students to take advantage of the wide range of sports and coaching that are available to them.

All Year 8 students have organised sport for one hour in class time (extra to Physical Education classes), and a Sports Co-ordinator is employed to organise lunchtime sports, along with student lead challenges.

School teams and individual students take part in inter-school sports exchanges, and regional and national competitions. Teams are coached, managed by staff and parents with expert coaching being employed in specialised areas. Parental support is an essential component to the continual running of sports at Tokomairiro High School.

Sports available at Tokomairiro are:

- ◆ Athletics
- ◆ Basketball
- ◆ Cricket
- ◆ Cross Country
- ◆ Golf
- ◆ Hockey
- ◆ Netball
- ◆ Orienteering
- ◆ Rugby
- ◆ Soccer
- ◆ Swimming
- ◆ Tennis
- ◆ Touch Rugby
- ◆ Multi Sport/Triathlon
- ◆ Volleyball



Outdoor Education

We regard activities in the outdoors as an important part of school life.

The aims of our outdoor education are:

- To develop skills for safe use of the outdoors
- To develop confidence, self-esteem and social skills
- To develop an appreciation and enjoyment of, and respect for, New Zealand's natural environment
- To do fieldwork and research

Outdoor camps and trips are as follows:

- Year 7 – one day trip
- Year 8 – three day camp
- Year 10 – three day camp at Tautuku Outdoor Education Centre
- Year 11 – opportunity for tramping trip to Routeburn
- Year 12 – opportunity for tramping trip to Kepler
- Year 13 – Peer Support and Leadership Camp





Caring for our Students

We have a strong guidance and pastoral care network to support our students. Our aim is to make the school a safe place, where students and staff feel valued and are able to reach their full potential.

The foundation of our Pastoral Care Network is the House group, reinforced by Year Level Deans and the Guidance Counsellor.

Valuable interaction and formal support is provided through the Peer Support Programme where our Year 13 students are trained and operate independently with Year 7 students early in the year. These programmes greatly enhance a caring atmosphere where students interact positively towards each other. For the senior students such opportunities provide leadership and responsibility training.

A Wellness clinic is available weekly, operated by the District Health Nurse.



School Values

The “Tokomairiro Way”

All members of our school community are expected to live our values.

Respect - Whakaute

- Yourself
- Other members of our school
- Visitors to our school

Responsible - Haepapa

- For your own learning
- For your own behaviour
- For property

Excellence - Hiranga

- In our learning
- In our citizenship

Restorative Awareness

- “I am responsible”
- “I am sorry”
- “It won’t happen again”
- “What I can do to make up for it”





Mission

Working together to inspire excellence
in education, in character and in life

Philosophy

The aims of the School are embodied in the School Motto which is:

Disciplina Learning Akorake

Moderatio Self-Control Maahaki

Comitas Courtesy Wahakaaro Atawhai

The School aims to establish a community in which we can all live, learn and work in harmony.
The caring, sharing nature of the school is reinforced through expected codes of behavior towards
one another.

Please check out our school website

www.tokohigh.school.nz



TOKOMAIRIRO HIGH SCHOOL

238 Union Street, Milton, Otago, New Zealand

Tel: +64 3 417 8620

Fax: +64 3 417 8215

email: ths@tokohigh.school.nz

