



## APRIL SPECIALS

VALID UNTIL 30 APRIL 2024

### KENWORTH 2024 CLOTHING RANGE



**\$80**

**KEN230021**  
KW Grey Women's Sweatshirt  
Available in sizes S-XL

**\$19.50**



**KEN230035**  
KW Kid's Truck Cap  
Kenworth Since 1923



**\$38**

**KEN230037**  
KW Men's Boxer Shorts  
Available in sizes S-XL

**\$65**

**KEN230025**  
KW Men's Blue Sweatpant  
Available in sizes M-5XL

**\$65**

**KEN230024**  
KW Men's Black Sweatpant  
Available in sizes M-5XL



**KEN230036**  
KW Men's Boxer Brief  
Available in sizes S-XL

**\$30**



**\$30**

**KEN230063**  
KW Grey Tee Shirt KW Word  
Available in sizes M-5XL

**KEN230031**  
KW Men's World's Best Vest  
Available in sizes M-5XL

**\$75**



**\$34.50**

**KEN230038**  
KW Orange Hi Vis Polo  
Available in sizes M-5XL



**\$50**

**KEN230028**  
KW Grey Track Short  
Available in sizes M-5XL

**\$23**

**KEN230034**  
KW Grey Beanie  
With black leather patch



**\$30**

**KEN230044**  
KW Tee Shirt In My Office  
Available in sizes M-5XL



**\$30**

**KEN230047**  
KW Tee Shirt Haulin 24/7  
Available in sizes M-5XL



**\$30**

**KEN230033**  
KW Black Engineering Excellence Cap



**\$30**

**KEN230032**  
KW World's Best Grey Cap



**\$30**

**KEN230062**  
KW Black Tee Shirt Emblem  
Available in sizes M-5XL

### NEW KENWORTH MERCHANDISE

**\$15**

**KEN230001**  
KW Microfibre Cloth  
Dash microfibre cleaning cloth



**\$50**

**KEN230002**  
KW Wood Board and Knife Set  
Cheese board & knife set

**\$11.50**

**KEN230005**  
Kenworth Glass Tumbler  
'World's Best' etched on the glass



**KEN230006**  
Kenworth Beer Glass  
400ml beer glass World's Best Since 1923

**\$11.50**

**\$28**

**KEN230007**  
KW Coaster Set  
Set of six + holder, Brown



**\$19.50**

**KEN230008**  
KW Travel Mug  
Hot & cold travel mug with flip lid



**\$40**

**KEN230009**  
KW Lunch Box Stainless Steel  
Leak proof lunch box with divider

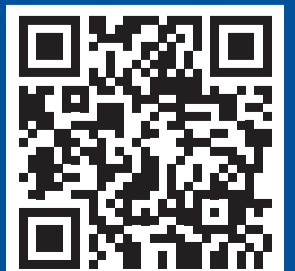
**\$50**

**KEN230004**  
KW Fleece Blanket  
Grey/white fleece blanket with KW bug logo



**KEN230010**  
KW Cooler Basket 16L  
Fold down cooler basket

**\$46.95**





**KENWORTH 100 LIMITED EDITION**

**\$17.50**

**KEN230064**  
KW100 Black Cap  
Metal clasp with  
Kenworth 100 Logo



**\$9.50**

**KEN230069**  
KW100 Keyring  
Brown leather



**\$15.50**

**KEN230065**  
KW100 Sunglasses  
Comes with case



**\$11.50**

**KEN230070**  
KW100 Travel Mug  
Stainless steel outer wall



**\$3.50**

**KEN230066**  
KW100 Pen  
Black ink



**\$20**

**KEN230071**  
KW100 Straw Hat



**\$11**

**KEN230067**  
KW100 Red Bottle  
Stainless steel with  
plastic screw cap



**\$10**

**KEN230068**  
KW100 Torch  
LED mini black torch



**KENWORTH 100**

**MERITOR DIFF 46-160**

**POA**

**RPL23160-0411**  
46-160 Front Diff 4.1 Ratio  
With Crosslock



**TRP MUDFLAP**

**\$15**

**MF24X30BTRP**  
TRP Brand Mudflap  
Black 24" x 30"



**\$895**

**A2-3226T1112**  
46-160 Front Diff Output Shaft Assy  
Includes shaft, bearing housing,  
nut and seal



**LOADBINDER PALLET ANGLE**

**\$24**

**KW-PA1040**  
Kenworth Pallet Angle  
Red 1040mm long



**TRP BRAKE DRUMS**

**\$190**

**G11**  
Drive Axle Brake Drum  
16.5" x 7"  
10 stud 285mm PCD,  
TRP by Paccar cast drum 48kg  
Suits KW, Freightliner, Mack,  
Navistar, Western Star



**\$1,800**

**KIT4423-SD**  
46-160 Front Diff Bearing Kit Severe Duty  
Severe duty spec bearing kit includes  
bearings, seals, thrust washers  
Suits KW Freightliner, Navistar, Western Star



**\$13**

**TRP-PA500**  
TRP Pallet Angle  
Blue 500mm long



**\$22**

**TRPPA1040**  
TRP Pallet Angle  
Blue 1040mm long



**\$270**

**DB017TRP**  
Drive Axle Brake Drum  
16.5" x 7"  
10 stud 285mm PCD, TRP by  
Paccar centrifuse drum 39kg  
Suits KW, Freightliner, Mack,  
Navistar, Western Star

**\$1,000**

**KIT4428**  
46-160 Rear Diff Bearing Kit  
Includes bearings, seal, thrust washer  
Suits KW Freightliner, Navistar, Western Star



**VORLANDI COUPLINGS**

**\$1,850**

**E55**  
Vorlandi 50mm Auto Coupling  
Comes with warning function



**\$210**

**DB016TRP**  
Steer Axle Brake Drum 16.5" x 5"  
10 stud 285mm PCD,  
TRP by Paccar cast drum 42kg  
Suits KW, Freightliner, Mack,  
Navistar, Western Star



SAVE 25%

**\$1,850**

**E551**  
Vorlandi 50mm Manual Coupling  
Comes with warning function



**AIRGLIDE REAR SHOCKS**

**\$275**

**K374-41**  
Shock Absorber AG200  
Suits KW & DAF Euro 4/5



**\$290**

**K374-38**  
Shock Absorber AG200/AG400  
Suits late KW AG200 early AG400 40000 lbs



**\$385**

**90-2478SP3**  
Shock Absorber AG460  
Koni AG460 10.5" heavy duty shock





**WORK LIGHTS**

**\$50**

**TXL9573**  
Work Lamp 115mm Round  
LED work lamp with 6 LEDS 27 watt



**\$60**

**TXL9526**  
Work Lamp 115mm Square  
LED work lamp with 9 LEDS

**\$45**

**TXL9572**  
Lamp Work 115mm Square  
LED work lamp with 5 LEDS



**TRP CLUTCH INSTALL KIT**

**\$490**

**CL1771TRP**  
Clutch Install Kit 2" 10 Spline  
upto 1850 FTLBS  
Suits KW, Freightliner,  
Navistar, Western Star



**ANCRA CORNER POLE**

**\$70**

**50451-11**  
Pole Corner Board Placement Tool  
Extends from 1.22 - 2.5m



**HOLLAND TOP PLATES**

**\$2,600**

**XA331EA**  
Holland Turntable Top Plate  
Non Lube  
Holland top plate with telfon  
wear pads



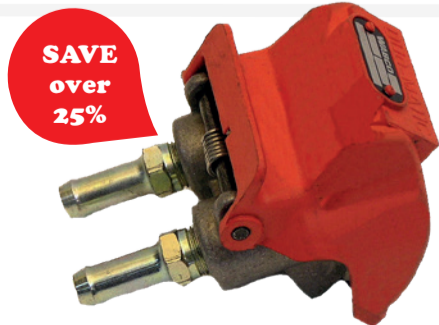
**\$2,350**

**XA351A-P**  
Holland Turntable Top  
Plate Lube  
Holland top plate without  
telfon wear pads

**DUOMATIC**

**\$15**

**SHBT804001**  
Duomatic Male Half  
Ex new truck  
delivery km's



**TRP BRAKE PADS**

**\$150**

**908138**  
Disc Brake Pads  
Suits SAF with Pan  
19 caliper



**\$120**

**1970349**  
Disc Brake Pads  
Suits SAF with  
Knorr caliper

**DAF EURO 6 FILTER KITS**

**\$200**

**344**  
Kit Filter B Service MX11 E6  
Engine filter service kit Suits  
DAF E6 with MX11 engine



**\$200**

**533**  
Kit Filter B Service MX13 E6  
Engine filter service kit Suits  
DAF E6 with MX13 engine

**\$750**

**677**  
Kit Filter C  
Service MX11 E6  
Filter service kit Suits  
DAF E6 with MX11 engine



**\$900**

**763**  
Kit Filter C Service  
MX13 E6  
Filter service kit  
Suits DAF E6 with  
MX13 engine



**TRP SPRING BRAKES**

**\$79**

**2430TRP**  
2430 Spring Brake Assy.  
Make to length shaft  
Includes clevis



**\$65**

**3030SBTRP**  
3030 Spring Brake Assy.  
Make to length shaft  
Includes clevis

**TRP SLACK ADJUSTER**

**\$175**

**SA10202**  
Slack Adjuster Auto  
Auto slack 1 1/2 " 28 spline



**VEHICLE SAFETY**

**\$15.65**

**TS205**  
H Sticker Sign HPMV  
H Sticker 200mm x 200mm  
yellow reflective



**\$25**

**TS605**  
DG Document Holder  
Velcro fastener

**RINGFEDER**

**\$1,590**

**1747387**  
Ringfeder Assy 50mm  
5050B Auto coupling



**ANCRA SAFETY CARGO BAR**

**\$60**

**50441-10**  
Safety Cargo Bar  
Steel safety cargo bar  
extended length 2.27m



**BOOST INTERCOOLER HOSES**

**\$97**

**D1029-8748**  
Hose Intercooler 4"  
4" diameter x 6" long intercooler  
hose 2 hump with rings



**\$165**

**D1029-8761**  
Hose Intercooler 4" x 4.5"  
4" x 4.5" diameter x 6" long

**\$198**

**D1029-8761XL**  
Hose Intercooler 4" x 4.5"  
4" x 4.5" diameter x 7" long



**\$115**

**D1029-8699**  
Hose Intercooler 4"  
4" x 4" x 6" long single hump  
with 2 rings



**\$176**

**D1029-8701**  
Hose Intercooler 4" Extra Long  
4" x 4" x 8" long



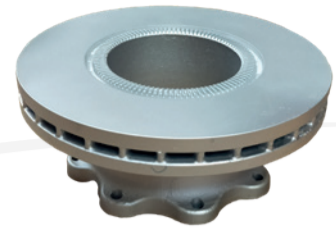


### HENDRICKSON

# \$300

97017-006

Hendrickson 15" Brake Lining Kit  
Hendrickson intraxx brake lining set, does 1 axle



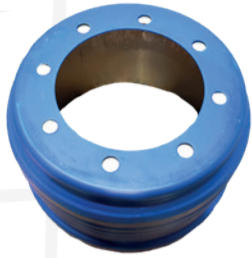
# \$375

D-33390  
Hendrickson Intraxx Rotor

# \$289

HSS-27826

Hendrickson Brake Drum  
15" x 8 5/8" 8 stud 275PCD



# \$470

98881-021  
Hendrickson Intraxx Brake Pad Kit  
Does one axle set

# \$130

C-25029-40

Hendrickson Brake Shoe 15" Brake  
Sold individually



### EATON CLUTCH

# \$1,850

308925-25

Eaton Easy Pedal 15" x 2"  
VCT 10 Spline  
Suits 2050 ft/lbs torque Cat  
C15 Cummins ISX



# \$2,050

308935-271  
Eaton Easy Pedal 15" x 2"  
DCF 10 Spline  
Suits 1850 ft/lbs max torque

### LINED BRAKE SHOES WITH ANCHOR PIN KIT (DOES ONE WHEEL)

# \$160

4715QPLS

Lined Brake Shoe  
16.5" x 6"  
Suits KW with MFS73  
front axle



# \$120

4515QLNS

Q-Type Lined Shoe 4515  
16.5" x 7" drive axle  
Suits KW, Freightliner, Mack, Western  
Star, Navistar with Meritor Q brakes

# \$150

SAVE  
up to  
25%

4720QPLS

Q-Plus Lined Shoe 4720  
16.5" x 5" steer axle FG941, MFS66  
Suits KW, Freightliner, Mack,  
Western Star, Navistar with Meritor Q-Plus brakes



# \$118

4707QPLS

Q-Plus Lined Shoe 4707  
16.5" x 7" drive axle  
Suits KW, Freightliner, Mack, Western  
Star, Navistar with Meritor Q-Plus brakes

### DAF COOLANT

# \$35

1602270

DAF Coolant 5 Litres  
DAF premixed longlife



1602271  
DAF Coolant 20 Litres  
DAF premixed longlife

# \$210

# \$1,600

1602272  
DAF Coolant 210 Litres  
DAF premixed longlife



### TRP CAT COOLANT

# \$25

CTEC3501

CAT premixed longlife coolant  
1 US Gallon / 3.75 litres



### WHEEL ARCH FLARES

# \$490

KW08P004

KW S/S Wheel Arch Flares T904/908/909  
Suits Kenworth T909 without factory  
fitted rubber wheel arch trims



### EATON CLUTCH INSTALL KITS

# \$650

312532X

Kit Clutch Fork + Shaft  
Suit KW / DAF  
with Roadranger



# \$685

K-4450-PAC

Clutch Install Kit 2" 14 Spline  
RTL022918B with 14 spline input shaft  
Suits KW, Freightliner, Navistar, Western Star



# \$590

K2468

Clutch Install Kit 2" 10 Spline  
Suits KW, Freightliner, Navistar, Western Star

### DAF ROTOR

# \$335

1812563

DAF Front Disc Brake Rotor  
Suits DAF 75/85/95/105, Foden Alpha ii



# \$280

1982826

DAF Disc Brake Pad Kit  
Suits DAF 75/85/95/105,  
Foden Alpha ii does one axle



PRICES VALID UNTIL 30 APRIL 2024 OR WHILE STOCKS LAST. PRICES EXCLUDE GST.



AUCKLAND  
Ph: 09-263 7710

HAMILTON  
Ph: 07-222 2041

ROTORUA  
Ph: 07-345 9761

GISBORNE  
Ph: 06-261 5660

NEW PLYMOUTH  
Ph: 06-262 0009

PALMERSTON NORTH  
Ph: 06-222 3400

CHRISTCHURCH  
Ph: 03-344 0252

TIMARU  
Ph: 03-264 6000

### TRP DEALER NETWORK

#### NORTH ISLAND

**KERIKERI**  
Commercial Diesel  
PH: 09-407 5514

**WHANGAREI**  
Commercial Diesel  
PH: 09-438 6915

**WARKWORTH**  
Commercial Diesel  
PH: 09-425 8456

**MT. MAUNGANUI**  
Truckline Services  
PH: 07-575 3883

**TOKOROA**  
Heavy Diesel Ltd  
Ph: 027-345 2536

**TAUPO**  
Taupo Diesel Solutions  
Ph: 07-377 4324

**GISBORNE**  
Coastline Truck Services  
Ph: 06-281 0121

**NEW PLYMOUTH**  
Egmont Diesel Services  
Ph: 06-756 6650

**NAPIER**  
Eastern Truck Parts & Service  
Ph: 06-843 0400

**WANGANUI**  
Emmetts Service Centre  
Ph: 06-344 5055

**PALMERSTON NORTH**  
Emmetts Service Centre  
Ph: 06-354 2691

**MASTERTON**  
Commercial Fleet Services  
Ph: 06-370 1649

**WELLINGTON**  
North City Diesel  
Ph: 04-237 8926

#### SOUTH ISLAND

**NELSON**  
CVC Nelson  
Ph: 03-546 4605

**BLLENHEIM**  
Transport Repairs  
Ph: 03-578 9574

**CHRISTCHURCH**  
Transport Repairs  
Ph: 03-349 6597

**CHRISTCHURCH**  
HDPS  
Ph: 03-349 2009

**TIMARU**  
HDPS  
Ph: 03-686 6663

**CROMWELL**  
Transport Repairs  
Ph: 03-445 4526

**DUNEDIN**  
Dunedin Truck Servicing  
Ph: 03-479 0150

**GORE**  
Transport Repairs  
Ph: 03-208 3008

**INVERCARGILL**  
Transport Repairs  
Ph: 03-263 4750