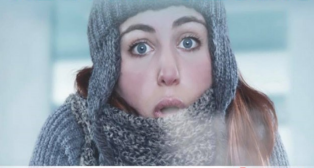




Save on heating and cooling bills - have your Heat Pump Cleaned and ready to go for \$75

HEAT PUMP CLEANING



0800 24 74 39 **\$75**
www.airify.co.nz

More Heat... Less Power!

Sailing into Summer with some welcome shade



From left, Gerald and Jamal from Garador and Peter from DCC Parks and Recreation.

The community asked for it and now it's happening—a shade sail will be installed in the next two weeks, over the picnic table in the Greater Green Island Community Recreational Area. The Greater Green Island Community Network was gifted \$10,000 for the shade sail from the Bendigo Valley Sport and Charity Foundation. Thank you! The area will be fenced off for health and safety, but please do also watch on your kids and keep them away from the construction area. The shade sail will be owned and maintained by the GGICN over

the next three years. Thanks again Bendigo for your support in the Greater Green Island Community! We would also like to thank Seth McPhee from D M Holdings for volunteering his time and skills to provide us with an arborist report for the trees around the well area in the playground. This is the potential site for a BBQ and stage area. The project is currently being discussed with the Dunedin City Council. If approval is given, the next stage is a design consultation and fundraising.



Green Island Cafe

193 Main South Road, 0210 581 077

Green Island Cafe is located at the center of Green Island in the Post Shop Complex. We offer a wide range of delicious food and coffee to eat in or takeaway. All food is made fresh on site.



46 Brighton Road, Green Island

Phone: 03 488 0232

Cellphone: 027 3403 148

Opening hours:

Tuesday 9am-4pm

Wednesday 9am-4.30pm

Thursday 9am-Late

Friday 9am-4pm

Saturday 9am-1pm

Available outside opening hours by appointment



D M HOLDINGS
PEST CONTROL | TREE SERVICES | SPRAYING

0800 023 790



Otago Neighbourhood Support have changed their email addresses

Contact the Regional Coordinator: Joy Davis

coordinator@nsotago.nz

or Encouraging Safety Coordinator (Mosgiel Taieri) and
ONS District Rep: Jacqui Hyde

community@nsotago.nz



www.neighbourhoodsupport.co.nz

Do you have a new business in Greater Green Island area?

Advertise with us in the Informer, and reach local residents
in suburbs in the Greater Green Island area.

Contact us at informer@greenergreenisland.nz for
enquiries and rates.



Next Meeting:

Thursday 18th March, 5.30 — 6.30pm
Village Green, Sunnyvale

No need to RSVP just come along if you are interested
**Become a member of the Green Island Business
Association, and develop your networks and
business.**

Membership for the first year is *only* \$30
Members also receive 20% off advertising in the
Informer.

Monthly meetings and 3-4 social events annually

**For more information about membership, please
contact:**

**Larna McCarthy on 425 7720 or
larna@greenergreenisland.nz**

Business Booming for new gift shop



Open the door into Green Island's Vintage Honey's Parlour, and prepare to be whisked into a magical land of all things pretty and giftware.

Recently opened on Main South Rd, the shop is drawing in many customers, and according to owner Nicola Chisholm, stock has been going out quickly.

“Business has been fantastic since moving to Green Island. The community in Green Island have been so welcoming and supportive of our shop. Sometimes it feels like you're on holiday, it is just an awesome place to be. The local businesses have all introduced themselves to us and the locals are extremely friendly and interested in what we are doing. We couldn't be happier!” Ms Chisholm said.

Inspired by vintage design and a strong creative interest in handmade and natural products, Ms Chisholm makes a lot of her products (skin care, candles) as well as stocking giftware to become a “one stop” gift store.

Opening hours are:

Tuesday to Friday 10.30am—4pm,

Saturdays: 10.30am - 2.30pm.

Closed Mondays and Sundays.

Abbotsford School Carnival

The Abbotsford School Carnival is coming up and you can 'Rent a Table' in the hall. This is a place where anybody/business/group can sell what they want all for the bargain set price of \$20. Please contact the school office at office@abbotsford.school.nz to book a space, as well as a brief description of what you will be selling (no baked goods please).

IMPORTANT UPDATE

Announcing new contact details for the
Greater Green Island Community Network

Our new postal address is

PO Box 13006, Green Island, Dunedin 9054

Our new phone numbers and email addresses are

Amanda Reid: ph. 425 7719 (mornings)

Email: amanda@greenergreenisland.nz

Lama McCarthy: ph. 425 7720 (afternoons)

Email: lama@greenergreenisland.nz

Local Halls for Hire

Janet Cameron Hall	455 1096
Fairfield Community Hall	
E: fairfieldhallbooking@outlook.com	
Brighton Community Hall	481 1787
Robertson Memorial Hall	481 1787
Civic Hall	488 2240
Brighton Bowling Club	481 1482
Island Park Golf Club	488 2258
Brighton Surf Life Saving Club	0274 342 221

Riding between the Lines



Pictured from left, Orla Kane (7), Ava Creasey (7), Emily McKenzie (6) and Levi Dijker-Long (6).

A new bike track, similar to that at South Dunedin's Marlow Park, has been installed at Concord Primary School.

Thanks to funding from Bikes in Schools, principal Steve Turnbull said the track which includes roundabouts, stop and give way signs, was a huge success.

"It's been a real hit with the students," he said.

DCC staff had also been giving tips on riding safely.

The school was also waiting for 25 new bikes and helmets, but due to Covid Mr Turnbull said he was not expecting them until July.

The school also has a new BMX track.



Greater Green Island Informer

www.greenergreenisland.nz



Informer Editor: Sasha Turner

Informer Volunteer: Lindsay Aitchison

Found Online At: www.greenergreenisland.nz

Distribution: 1000 copies per issue

Copy Deadline: 15th of each month

Email: informer@greenergreenisland.nz

Readership: 2200 approximately

**Send us your
articles, photos,
adverts, stories and
events to share**

Articles are free for events, community groups and clubs that are not for profit in the Greater Green Island Suburbs. Please email your articles and stories in Word documents and images/posters in JPEG files. Advertising can be purchased. Sign up on our website above to have the newsletter sent directly to your email.

GGICN News

2021 has kicked off with some big changes in the business landscape—with many new businesses coming into the area, opening their doors to what is becoming a thriving marketplace. We work closely with the Green Island Business Association and the Dunedin City Council, to ensure shopping areas are presented well and roading is safe and well-maintained. These are exciting times for our business community, and we thank you for showing incredible support to keep local trades and business alive. Keep an eye on Page 2 of each Informer; we will be profiling new businesses each month.

BIG NEWS for many residents is the shift of the Green Island Post Office and Kiwi Bank facilities. A huge thank you to Paul Larson of Larson's Pharmacy for accommodating these services in his premises. As we all know, a post office and ATM are important services in a community, and we are grateful not to lose them.

The last day of business for Green Island Post will be Tuesday, 30th March. It will re-open at Larson's Pharmacy, on 216 Main South Road on Thursday, 1st April.



GREEN ISLAND JUNIOR FOOTBALL CLUB

Happy New Year and welcome to the 2021 football season.

Registration 2021 opens 1st February and closes March 7th

This can be done online via GIJFC www.gijfc.co.nz or at the club day that is to be held 28th February

- Kickets \$25
- 6th grade (born 2015) \$60
- 7th (born 2014) to 12th (born 2009) grade \$85
- 13th (born 2008) to 15th (born 2006) grade \$95
- Youth \$100

Season starts 1st May with grading and festival games

Club Fun day

This year the club will run a fun day **February 28th**

Come along for fun games and sausage sizzle

Registrations and uniform pick-up available on this day

Sunnyvale, Main South road.

Coaching, managing or joining the committee.

Please send an email to GIJFCcommittee@gmail.com if you are keen to get involved and help out.



Experience HAIR UNISEX
200 MAIN ROAD
GREEN ISLAND
Phone 488 3624

Thank you to all those businesses who support the work of GGICN - your help is appreciated!



The Green Island Southern Community Laboratory Blood Test/Collection Centre is currently closed due to COVID-19. A decision will be made on the reopening of the centre when Aotearoa/New Zealand is out of all COVID-19 Levels.

The closest collection centres can be found at:

South Dunedin Collection Centre

67 Hillside Road
Dunedin

Open Hours

Weekdays; 07:30am - 16:15pm

Mosgiel Collection Centre

C/- Mosgiel Health Centre
21 Inglis Street
Mosgiel

Open Hours

Weekdays; 08:00am - 15:45pm - by appointment only
Phone 03-470 2919 option 2

Abbotsford School

NOTICE OF AGM

The Abbotsford School Parent Committee will be holding its Annual General Meeting on Wednesday 17th March 2021 at 7pm in the school staff room.

All welcome to attend.

The Green Island Community Garden is a garden run by the community for the community, where you literally reap what you sow!

Open weekly on Tuesdays 12pm-2pm and Saturdays 10am-12pm.

If you are interested in being involved give Marion a call on 0212631221 or check us out on facebook.





Children's Day Out

'Treasure our Children'

Saturday 6th March

10am - 1pm

Forsyth Barr Stadium, Dunedin

Gold coin donation



Free Games and Entertainment

Bring your teddy and picnic food for Teddy Bear's Picnic



In the first 1000 days we make the difference of a lifetime

Neighbours who like to party



Everyone loves a good party - especially the residents of Mitchell Street. Each year, the residents gather for an annual street party and BBQ. Resident Kerri said she had been attending the gatherings for 10 years, but it had been a calendar event for "many, many years".

"It brings us together as a street, we get to know each other and the children get to play together. The best thing about our BBQ is we build a strong connection with neighbours which we think is very important," she said. "We even have people who have moved away still come back to celebrate and meet the new people."

Well done Mitchell Street—lets take inspiration and meet our neighbours this March for Neighbours Day Aotearoa—details on the back page.

Green Island Shed Update

A huge thank you to Bendigo Valley Sport and Charity Foundation for the \$3,000 grant. The Green Island shed can now afford to install some much needed drainage.



Since the last report, things have been moving ahead. We now have a power supply and a timber rack to get more things sorted. One of our next jobs is to get some drainage done above the back of the shed. Also, land beside the tools container needs to be levelled ready for another project.

Besides all this, we had a good day at the Brighton Gala Day with sales and we are continuing with other projects.

Bruce Cromb, President.

The Green Island Shed offers a workshop to mentor wood working, tool handling and construction. Shed hours are:

Monday & Friday 10am—12pm

Saturday 10am to 1pm.



From your friendly Community Constable, Fred Jansen



There's plenty of reasons to take extra care on our roads at the moment. You may have noticed a lot of road works happening around the community, and while this slows traffic down, it's important to be patient and adhere to the required speed restrictions. Please don't put road workers at risk - they are out there, making the roads and pathways safer. Speed can also damage the new seals, so please slow down.

And don't forget, drive at 40km/hr past school. Little people rely on drivers to be alert and responsible.

*Remember, if you see any dangerous driving, call *555 to report.*



Call 105 or go online to 105.police.govt.nz

Brighton Gala Day 2021

The Brighton Gala Day celebrated its 25th Anniversary this year, and it wasn't without a bit of drama—planned entertainment, that is.

There were blasts of gunfire, as crowds were treated to a demonstration by the Armed Defenders Squad.

The men in black swooped in via helicopter, and arrested an escapee, showing tactic and drama in the display.

Our local constable, Fred Jansen, was also on the scene to chauffeur the gunman away, sirens blaring.

But the real noise came from the squeals of sugar-high children, flying and twirling on the many Gala Day rides and shoppers mingling at the stalls.

A big thank you to the Colin and Ann Weatherall, and Scott Weatherall for all your hard work in making this event happen, and to the many others who supported and funded this day. It's a real highlight on the calendar, every year!



Thank you to all the fabulous stall holders and entertainers for making this day so magical.

See you again in 2022!

Abbotsford Kindergarten Celebrate Chinese New Year 2021



Abbotsford Kindergarten were delighted to have the Dunedin Senior Chinese Association dance group to come and perform for the children and staff. This was to celebrate the Chinese New Year 2021, the year of the Ox. The children were mesmerised with the dance routines which started with the waist drum dance which has a history of more than 2000 years. The vibrant drumbeats are believed to bring luck, fortune, happiness and longevity. The dancers held the concentration of the children with their elaborate costumes and intricate choreography. This event brought rich learning to the children of Abbotsford Kindergarten, spreading knowledge of ancient traditions, cultural diversity, languages, music and customs. To express their appreciation of the beautiful Chinese dancing, the children have handmade many gift cards and presented them to their distinguished guests.



Community Workers: Larna McCarthy and Amanda Reid

Office: GI Police Station, 198 Main South Road, Green Island

Phone: Larna 4257720 or Amanda on 4257719

Email: info@greenergreenisland.nz

The Greater Green Island Community Network is a registered charitable organisation. To find out more about our projects in the community, please visit www.greenergreenisland.nz. If you would like to support the work we do, a donation would be appreciated. 03 1725 0121605 00 Westpac

Connecting our community through events, website, newsletter & directory.

Supporting local clubs and groups.

Facilitation of local projects & advocacy for local needs.



The Great Plant Swap
March 20-30, 2021

Every year, in Aotearoa, we celebrate Neighbours Day—and we make a week of it!

And after the year that’s been, we’re continuing to look outside our bubbles —and connect people and communities together more.

And it’s not just about coffee. This year, organisers have introduced a ‘Swap a plant or give a plant theme’

Usually the Greater Green Island Community Network assist community groups to hold neighbourhood events, but in the current Covid-19 environment we are taking a cautious approach. We would like to encourage you to connect with your immediate neighbours with a plant swap, a baking swap or just to swap of phone numbers and email addresses. If you want some more ideas, please check out the Neighbours Day Aotearoa Website or Facebook page: www.neighboursday.org.nz/



The Greater Green Island Community Network would like to remind people of the importance of using the NZ Covid Tracer App. Lets get back in the habit.

If you would like help to download the NZ Covid Tracer App, please give us a call to make a time - Amanda 425 7719 (mornings) or Larna 425 7720 (afternoons).

We also have some NZ Covid Tracer booklets if you prefer this option.

We have free patterns and material for mask making if you would like to create your own reusable mask at home.

For official information and updates from the New Zealand Government about COVID-19 the website is www.covid19.govt.nz

Or use the Facebook page:

<https://www.facebook.com/UniteAgainstCOVID19>

