

Funding Grants Successful

IMPORTANT DATES

November

- Brighton Surf Life Saving Club open days, 4th-5th Nov
- Abbotsford School Fair, 5th Nov
- Fairfield Hall Craft Market, 12th Nov
- Taieri Mouth Multi-sport and Duathlon Event, 12th Nov
- Green Island School Quiz Night, 14th Nov
- Greenland's Quiz Night, 14th Nov
- Concord School Ladies Evening, 20th Nov

December

- Green Island Christmas Market Day, 2nd Dec
- Food Bank Drive, 4th Dec
- Festival of Lessons and Carols, 17th Dec
- Fairfield Hall Christmas Market, 10th Dec

If you have a story, photo, article for the next edition please email this to amandar@psotago.org.nz



Greater Green Island Community Network Committee: Above Left: Pip Weber. Right: Mel McNatty. Left Clockwise (from front left): Jules Haldane, Jan Clark, Fred Jansen, Steve Hayward, Amanda Reid, Leanne Stenhouse.



The Greater Green Island Community Network was very fortunate to be funded by the Department of Internal Affairs Community Development Scheme for three years from 2014-2017. The funding allowed for a full-time Community Worker which has enabled the Community Network to facilitate many community events, including school holiday events, an artisan market, family fun days and community morning teas, Pop Up community services, etc. It has allowed us to survey the community to establish priorities, advocate with the DCC, ORC and NZTA regarding bus routes and road safety improvements including the Green Island roundabouts, co-ordinating the Greater Green Island Food Distribution, the set up of the website www.greenergreenisland.org.nz, the publication of the Greater Green Island Informer monthly newsletter and - how could I forget, the Playground!!! We sure have been busy!!!

Now that this funding is complete, we are moving into a new phase of work. We will continue to work on the current priorities, and we hope to establish new priorities through our current brief survey (please see back of Newsletter). We have been working hard to ensure the continuation of the Community Network and have secured funding from the Lottery Community Fund (\$23K) and the Otago Community Trust (\$10k). We are extremely grateful for the support of these organisations. We have also been working on a Supporters' Club model and appreciate the support of the Greater Green Island Business Association. We are also looking at the possibility of a Social Enterprise (watch this space!). We will continue to apply for funds as required.

We have been blown away by the support we have received from local businesses and individuals, especially with regard to the Greater Green Island Community Playground Project. It certainly proves the power of being Community led. If it is something the community wants, they will get behind it. We look forward to seeing you at the Green Island Market Day on the 2nd of December. Make sure you come and say hello and talk to us about our Green Island Urban Design Consultation.

Free Movie at Concord Baptist Church

A group of volunteers from the Dunedin City Baptist Church (in Concord) organised and hosted a family movie morning in the October school holidays for all community members. The movie chosen was the newly released Trolls, which had everyone tapping their toes and laughing. The Greater Green Island Community Network supported the event by providing a popcorn machine. So with the modern room with a large screen, bean bags and fresh hot popcorn, the event was even better than watching it in town! Not to mention how nice it was to meet other local families. The Dunedin City Baptist Church group is looking to hold a free activity for families each school holidays, and are considering various ideas for summer. If you have family activities ideas that the church could organise, please feel free to contact Jen Crump. Email: jencrump13@gmail.com. Thank you to all involved in holding the event.



Your Community Garden Open for Spring-Summer

Spring is here which means it time to get your gardening gloves out and have a play in the garden. **The Green Island Community Garden** is open to all interested community members. Marion Thomas is a dedicated committee member who will be at the garden every **Tuesday, 12pm to 2pm and most Saturdays, 10am-12pm**—updates will be posted on the Green Island Community Garden Facebook page. Any community member is most welcome to come along, learn how to garden or share your skills with others. Share in the work and you can share in the produce. The entrance to the garden is at the end of Shand Street behind St Peter Chanel School and the Green Island Memorial Gardens.



Thank you to the donations from the Otago Community Trust for fruit trees and to the community members who have donated a new wheelbarrow and some gumboots for all to use.



Annual GGI Festival

In December 2016, the St Peter Chanel Parish was filled with the beautiful sounds of carols from a choir organised by local resident, Jack Rutherford. Lessons were read by people representing the greater Green Island Community districts. A committee made up of representatives from the Anglican, Catholic and Presbyterian Churches are currently planning this year's festival for all community members to enjoy. This year lessons will be read by various social groups and clubs in Greater Green Island. The first practice will be held on the 21st November, 7.30pm at St Margaret's. If you would like to be in the choir, please phone Jack Rutherford on 488 6081.

Keeping It Real With Fred

When coming up to an accident, look up and around, be aware and follow the directions of the Police or Traffic Management. Be prepared for change. Take your time.

Fred Jansen, Senior Community Constable.



THE GREATER GREEN ISLAND



FESTIVAL OF LESSONS AND CAROLS

17 DECEMBER AT 7PM
ST MARGARETS
CHURCH, MAIN SOUTH
ROAD, G.ISLAND

Brought to you by the Anglican, Catholic and Presbyterian Churches of Greater Green Island
Please phone Jack Rutherford if you would like to be a singer.
Phone: 4886081



Greenland's Café and Restaurant are holding a weekly **Pool Competition** on Mondays at 6.30pm.

\$5 Entry with 20% of the entry fee donated to the Greater Green Island Playground development.

A Quiz night is also being held on

November 14th , 7pm

The profits of the Quiz will go towards an Assistance Dog for local resident, Brenda Ferguson.

Phone: 488 4830 to sign up your team of 4-6



Green Island Ladies Night

15 November at 17:00–21:00

Greenland's Cafe and Restaurant,
215 Main South Road, Green Island,
Dunedin,

A Ladies Night in little old Green Island.

Wine, Cheeses, Pizzas, Ladies Pool, Ladies Darts, Nutrimitics
Christmas display with amazing one night only offers!

DoTerra Oils will be along too.

Kohatu Designs Carving Workshops and Sales



I am offering 2 - 2.5hrs stone carving workshops during weekends in Waldronville for \$50.00. People take their own piece of work home completed. All carving materials and tools are provided, plus refreshments.

Please text/call Dave to make a booking. I can book a group up to 6 with a discount. Phone: 027 3313304

I also have Oamaru stone carvings available for sale and can do orders, some pictures attached.

Please contact Dave Broughton on 027 3313304.

Community Project in Need of Paint

A group of Abbotsford families are coming together to paint this wall in the Matthew Street playground to make it into a castle for kids to play. Do you have any left over paint at home that you could donate? If so, please phone Amanda or Leanne on 470 0814. If you would like to part of the group who will be water blasting, undercoating and top-coating the wall, please also let us know. After the wall is prepared, there will be a notice to any local kids to come and help paint the castle.



Taking Care Of Your Health The Natural Way

My name is Paula and I am a Health and Wellness advocate for doTERRA International. doTERRA has been life changing for myself, my family, and now so many others that I get to share it with each day and I tell you, it's been so amazing. If you would be interested in talking to me about what you can try then feel free to get touch and I can organise the information you may need and a sample for you to try. **Paula 0273274191**

Weight issues-sleep- dermatitis -eczema- sinuses-coughs / colds /flu-immunity- arthritis menopause/pms- and so much more. Ask me what may help you.



If you have a story, photo, article for the next edition please email this to amandar@psotago.org.nz or leanness@psotago.org.nz
Photos and images in JPEG format please

Green Island School

Tuesday November 14th 2017, QUIZ STARTS AT 7PM



The FUNDRAISING AT
Kensington
4 King Edward Street est.1915



Quiz Night, Tuesday 14th November 7pm

At the Kensington Tui Bar

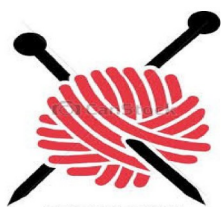
Teams of 6, \$5 per person

Raffles for sale on the night

A limited number of tickets available from the school office.



Phone 488 0232 to book a time with Stylist Fran. 46 Brighton Road.



Do you like to
**Knit and
natter, craft
and crochet?**

Or perhaps want to learn?

A group of like minded people meet at **Greenlands Cafe and Restaurant**, (old Arthur Daley's), Main South Road, Green Island, 2nd and 4th Wednesday of the month.

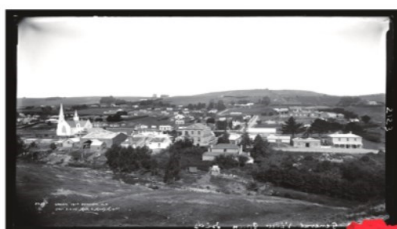
1-3pm

Contact Pip on 0274892558



In *Loving Memory* is a **new book** about the Veterans in Green Island Memorial Gardens.

To view a copy please visit the Green Island Police Station, Mon-Thurs mornings or at the Dunedin and Mosgiel Public Library. In *Loving Memory* is available for purchase for \$55, with free delivery in Dunedin. For orders outside of Dunedin, shipping will cost \$8 for up to two copies. If you are interested in purchasing a copy, please phone Francis Rowe on 021 0735363.



Loving Memory



**GREATER
GREEN ISLAND
BUSINESS ASSOCIATION**

The Greater Green Island Business Association has been a bit quiet in recent years as local owners/managers have been busy building up our wonderful community businesses. The association also does a great job of organising the Green Island Market Day each year. The Greater Green Island Community Network have recently taken over the administration work for the Association and hope to help rejuvenate it by encouraging new members and helping to organize more regular meetings, and networking opportunities for local businesses.

If you are interested in joining the Greater Green Island Business Association, please contact Leanne on Ph. 4700814 or email: leannes@psotago.org.nz

PLAYHAIR
WHERE KIDS CUTS ARE MADE FUN

199 Main South Road, Green Island

**GREATER GREEN ISLAND COMMUNITY
PLAYGROUND FUNDRAISER**

During Green Island Market Day
(10am—1pm on the 2nd of December)

50% of all takings from Hair cuts / Hair ups etc will go towards the Playground!

Please book at www.facebook/playhair.com
or phone 03 488 5179

A huge thanks to Kellie at Playhair!

Fairfield Hall Craft Market

12th November and Christmas Market 10th December

10am - 1pm

Fairfield Community Hall
(10 Fairplay St, Fairfield)



Fiona: 027 715 0522 childrenmarket@outlook.co.nz

QUIZ NIGHT

For **FAIRFIELD
SCOUT GROUP**



Raising funds for
Ceiling and Roof Repairs



TUESDAY
14 NOVEMBER - 7PM

\$5pp

WITH A MAX OF 6 PER TEAM

Raffles on the night... Bar facilities available

Register your team by

email: nicole.broekhuysen@hotmail.co.nz or phone Sharon Mosgiel RSA 489 7182



www.greenergreenisland.nz

Feedback Please

We are Community led and want to make sure that we are on the right track. We really appreciate the support and input we have received from businesses and individuals with our work to date. Please fill out the feedback form and drop it into the box at Fresh Choice or the Green Island Post Shop and Café. Thanks in advance from the GGIC Network.





Planning Survey 2017

We are Community led - The Projects we have been working on this year have been priorities that we took from the GGICN Survey completed in early 2016. We will continue to work on current projects, but want to ensure we are on the right track with any other projects the community feels are important.

(Playground & Road Safety are current priorities)

Please fill in the quick survey below and let us know what is important to you

- Road Safety and Urban Design/Public Art of Greater Green Island
- Newsletter (Greater Green Island Informer)
- Community Events
- Local School Holiday Activities
- Environmental / Waste Minimisation
- Community Morning Teas / Suppers
- Fruit Trees in Public Areas
- Community Gardens
- The Green Island Shed (Workshop & Crafts)
- Playground development
- Civil Defence Readiness—Asset mapping etc (in conjunction with DCC)

What priorities do you want the Greater Green Island Community Network to work on?

.....
.....

Is there any feedback you would like to give? Please include your name, contact details and interest if you would like to help with a project.

.....
.....

Thank you for your time.

Please pop this in the box at Fresh Choice Moyles or The Green Island Post Shop and Café

Note: The survey is also available on our Website.

www.greatergreenisland.nz

Dunedin Kindergartens
Mata Mahaki Pūnaki O'Connor

Glass of Bubbles on entry

Ladies Evening

No entry fee

Fundraiser for Concord Kindergarten

Please join us for bubbles, nibbles, Stalls and Raffles
Make a night of it! Bring a friend and some gold coins!

WHEN: 20th November 2014 6 pm

WHERE: Concord Kindergarten, Mulford Street

STALLS BY: Tupperware Prenzel Starfish INDULGE

And MORE!

Raffles include prizes a \$100 Grab One Voucher, Ra Bar dinner for two, Otago Rugby Jersey, Canon 3-in-1 Pixma Printer and more

Come do some early Xmas shopping and support your local Kindy. All proceeds going to Concord Kindergarten

PROUDLY SUPPORTED BY

METRO world Canon GrabOne RA CAFE & BAR

2017 Food Bank Drive

**Monday 4th Dec
6.00 – 9.00pm**

Listen for the sirens in your street - please place your items in the 'Lions' trailer!



PLEASE HELP TO MAKE SOMEONE'S CHRISTMAS THAT MUCH BETTER!

Proceeds to Local Foodbank Only!

PROUDLY SUPPORTED BY THE FOLLOWING ORGANISATIONS

HeliOtago hirepool New Zealand POLICE SCOUTING New Zealand

OLYMPIC GYM NO EXCUSES Mosgiel/Taiari Rotary NEW WORLD Mosgiel

MOSGIEL GREEN ISLAND TAIARI LIONS FIRE RESCUE MOSGIEL St John Ambulance countdown POSITIVE SIGNS *The best little sign & print company*

Green Island Christmas Market Day



All the fun of the Fair!!

- Saturday 2nd of December 2017
- 10am-1pm
- Raffles
- Food
- Entertainment
- And much more.....
- To book a stall please contact Lee Cheshire @ Experience Hair 03 488 3624

ABBOTSFORD School Fair



**SUNDAY 5
NOVEMBER**

11AM - 2PM

72 NORTH TAIERI ROAD, ABBOTSFORD

WHITE ELEPHANT STALL . STALLS INCLUDING BALLOONS, JEWELLERY, FACE PAINTING, PLANTS, LOLLIES & MORE . SANDPIT DIG . PONY RIDES . HARLEY DAVIDSON RIDES . BEACH BUGGY RIDES . DUNK THE TEACHER . FIRETRUCK AND POLICE DOGS . MEGAZONE LASER TAG . BOUNCY CASTLES . CHOCOLATE WHEEL & RAFFLES . LOADS OF YUMMY HOT FOOD . DRINKS, CANDY FLOSS, POPCORN AND MORE . COFFEE CART