



WHEELY GOOD TIMES AHEAD!

Get your skullcaps on, Dunedin! The Valley Project is coming into 2023 at top speed! We've got a number of projects already underway, so believe us when we say there's lots for the community to look forward to in this first half of the new year.

For starters, the North East Valley community pantry is making a return along with a handsome new Lilliput library. Keep an eye on the North East Valley Normal school carpark for developments.

Keep your other eye on our Facebook page as we rev up for the harvest season. It is sure to be a tasty one! Picking, preserving, and apple pressing parties

shall be plentiful, and conveniently within and around Neighbours Aotearoa month. There are so many ways you and your neighbourhood can take part this year. You bet the Valley Project will have a hand in it, too.

But wait, there's more! The real banger in the coming months will be the revival of Creekfest! This wholesome, outdoor celebration of our beloved Lindsay Creek is set for April 2nd. Mark you calendars now! As in past years, Chingford Park will set the stage for activities and entertainment, food trucks, community stalls, and opportunities to engage with our natural habitat.

We know, the anticipation is a bit much! So what can you get involved with right now, you ask? Get pedal pushing! Now is a fine time to tune up your two-wheelers and join the Aotearoa Bike Challenge. All of this month, individuals and workplaces compete nationally to earn points for prizes by cycling at least ten minutes at a time, and by encouraging others to do the same. Ride anywhere, anytime during February. It doesn't matter if you're new to cycling or a regular rider.

Community members are very welcome to join the Valley Project team. We have freebies for those who do! *(continued on pg. #4...)*

GILLIONS
FUNERAL SERVICES
We're here for you.
100% locally owned and operated. Ask about our eco and pre-planning options.
☎ 455 2128
407 Hillside Rd. Dunedin
gillions.co.nz
Funeral Directors
ASSOCIATION OF NZ

Your North End Property Professional

Our innovative approach to real estate is taking the Dunedin market by storm!



NZ PROPERTY
SOLUTIONS

As a proud, local Opoho resident, I'm delighted to offer, on behalf of our team, a FREE Property Appraisal:

- 🏠 How much could your property sell for in today's market?
- 🏠 Ideas to help enhance the market value

Peter Gale
Licensee & Advisor
021 608 107 | peter@nzps.co.nz
Licensed under the REAA 2008



BETTER PROPERTY EXPERIENCES

Online shopping
now available at Gardens



**Plumbing
Laser**

"Murray and Corey Ford proudly servicing the Valley for 25+ years"

- Plumbing - new and existing
- Gas fitting
- Drainage

☎ (03) 456 3178

369 King Edward St. South D.
dunedin.central@laserplumbing.co.nz

heads
UP!

BRING IT ON, 2023!

Hello and Happy New Year! We're looking forward to seeing you soon! The Valley Project reception will re-open mid-February. Stay up to date via Facebook @ValleyProject. In the meantime, get a hold of us via email:

- ★ KRYSHA - Valley Voice Editor: voice@northeastvalley.org
- ★ JEN - Valley Project Manager: vpmanager@northeastvalley.org
- ★ LIAM - Community Dev. Co-ordinator: liam@northeastvalley.org

VALLEY PROJECT RECEPTION HOURS

Tues-Thur 10am-2pm | Mon & Fri 10am-12pm

(closed all public and school holidays)

- free wifi use
- placement of notices
- trap hire
- newsletter advertising
- laminating
- printing & photocopying
- booking community rooms

Subscribe to digital copies of the Valley Voice and/or OpenVUE newsletters:

<https://bit.ly/VPnewsletters>

Join the Valley Project Community Directory! Listings are entirely free!
www.northeastvalley.org/directory



THE FRED HOLLOWES COMMUNITY ROOM is available for hire! It has a max capacity of 30 and is equipped with a kitchenette (microwave, sink, jug, dishes/cutlery, serving wares, fridge, etc.) tables, chairs, whiteboard, TV, and more.

Check the bookings calendar on our website for availability (www.northeastvalley.org/services/community-room-bookings), then book Fred Hollows by emailing reception@northeastvalley.org

Mask wearing is voluntary practice for all staff and visitors of the Project. Disposable masks are available should you want one. Staff and room users are expected to practise healthy habits such as regular hand and surface sanitation. Please postpone your visit if you are unwell.

Plenty of free rapid antigen tests are still available. Drop in to collect a couple packs, or organise a contact-free pick-up via phone or email: **03 473 8614** or reception@northeastvalley.org. To find your nearest testing location, call **0800 VIRUS19 (0800 847 8719)** or visit wellsouth.nz.



A NOTE FROM OUR CHAIRMAN

Happy New Year to all of our Valley Project friends, supporters, and residents. I do hope you had a great start to 2023 and managed to get a chance to relax with family and friends. I also do hope Santa came to you all in various gifts!

Over the summer holidays our fundraiser for the Great Kiwi Poster reached its goal of \$2,000 - all raised by grassroots campaigning! What an awesome effort that will aid our legendary local artist, Bruce Mahalski, to deliver this creative competition nationwide.

We are also involved in this year's Aotearoa Bike Challenge, so dust off your bikes, pump up those tyres, and get ready to pedal your way to school, work, the city centre, or wherever you may want to go. With so many mountain biking tracks at our fingertips, this is a challenge our Valley locals will surely pick up. Take a 'selfie' with your bike, or photograph friends and family on their bikes, then send your shots to the Valley Project for a special feature!

Also, Neighbours Day is coming up in March! This is when everyone living in Aotearoa is

encouraged to get to know their neighbours a little better. We hope you will partake!

The Valley Project is looking to have a lively year! For starters, the revival of Creekfest has been set for April, community harvests are underway, and community stalls are in the works. Our executive and staff have been busy-bees over the last couple of months to get 2023 off to a banging start. We can not wait to share what we have organised with you all.

If you would like to raise any questions, volunteer for the Project, or get involved in any of our many enterprises or undertakings, please do not hesitate to get in contact with our friendly team. Once again, thanks for your support over the previous year! Coming out of COVID was challenging, but more than ever we need to rally around and support each other as the cost-of-living crisis hits our most vulnerable. If you have food or pantry staples to spare, donate directly to the Pinehill Pantry on Hislop Street, or drop off at the Valley Project for the Kai Share programme. Tēnā koutou.

-- James Sutherland

Need an MP?

David Clark MP for Dunedin

If you require advocacy, information or support please contact me

Dunedin Office

dunedin@parliament.govt.nz

03 474 1973

544 Great King Street, Dunedin

[f/DavidClarkMP](https://www.facebook.com/DavidClarkMP)



Authorised by David Clark MP, Parliament Buildings, Wellington



the student hand

When you don't have the time, energy, or ability to complete those odd jobs around the house contact The Student Hand.

We have Otago University Students eager to do anything from gardening to NCEA tutoring and everything in between such as:

- House Maintenance
- Gardening
- Lawn Mowing
- Tutoring
- Wood Stacking
- Car Cleaning and much more!

Contacts: TheStudentHand.com
lewis@thestudenthand.com
027 421 8026

Your local Dunedin electricians

DOMESTIC • COMMERCIAL • 24HR SERVICE



03 473 8519

www.mcarthursymons.co.nz

39 North Rd. North East Valley

Come and find out about volunteering with Hospice.

INFORMATION SESSION:

Wednesday 22 February | 6pm
Recruiting for cleaning, reception & kitchen.
Minimum one 2 hour shift a month.
Maximum one 5 hour shift a week.

To register please email volunteer@otagohospice.co.nz



Dunedin
OPTICAL LAB Ltd

- Frames: \$60 - \$95
- Distance/Reading Lenses from \$90
- Progressive Lenses from \$290
- Bifocals from \$150

same day service
(single vision lenses)

37 Saint Andrew Street
p: 03 262 1052 c: 022 516 9474
dunedinopticallab@outlook.com

100% LOCALLY OWNED & OPERATED



AOTEAROA BIKE CHALLENGE 2023

Individuals and organisations will compete to see who can get the most people riding a bike. A fun and free challenge open to everyone! Ride anywhere, anytime in February to participate. Prizes to be won!

Happening throughout the month of February and everywhere in Aotearoa!
www.lovetoride.net/nz
 See page #4 for more info



COMMUNITY FRUIT HARVEST DAY

Picking and preserving teams will work together to make a day of rescuing local fruit and turning it into delicious baking, jams, and other nourishment for the community. The Valley Project will host a BBQ for all volunteers involved. Follow Facebook for event updates, and to sign up to help out.

SATURDAY, 4 MARCH, 10am - 4pm
VALLEY PROJECT, 262 NORTH RD.
 Facebook: Community Fruit Ōtepoti



NEIGHBOURS AOTEAROA 2023

"Let's Share" is the theme for Neighbours Aotearoa 2023 which is a community development initiative dedicated to growing, connecting, and strengthening neighbourhoods across the country. How will you take part?

Happening throughout the month of March and everywhere in Aotearoa!
www.neighboursaotearoa.nz/
 See page #4 for more info



Saturday 11th March 2023
10:30am - 1:30pm

face painting baking and sweets books
 kids activities BBQ mini market stalls chocolate wheel
 and more!

63 North Road - North East Valley
www.sacredheartdn.school.nz



CREEKFEST 2023

Mark your calendar! The family-friendly celebration of our awa, Lindsay Creek, is returning! Come along for activities and entertainment, food trucks, community stalls, and opportunities to engage with environmental topics and practices surrounding Lindsay Creek, the lifeblood of North East Valley.

SUNDAY, 2 APRIL, 12noon - 4pm
CHINGFORD PARK SPORTS GROUNDS
FREE - koha appreciated



THE GREAT KIWI POSTER COMPETITION

Design a poster showing us the perfect future for Aotearoa and be in to win \$1000 and nationwide display of your creation! The theme is "Protect Our Future" / "Tiaki a Mātāhauariki". Competition categories include Junior, Intermediate, Senior, and Adult.

COMPETITION BEGINS 24 APRIL 2023
ENTRIES CLOSE 5pm, 16 JULY 2023
www.greatkiwiposter.com/

voice@northeastvalley.org
www.northeastvalley.org
facebook.com/valleyproject
[@valleyproject](https://twitter.com/valleyproject)
 (03) 473 8614

P.O. Box 8118,
 Dunedin 9041
 262 North Road,
 North East Valley, Dunedin

The North East Valley Community Development Project (a.k.a. The Valley Project) is a registered charitable organisation that builds community connections and promotes the wellbeing of local families and whanau. If you like what we do, you can donate at:

the
VALLEY
 project

givealittle
www.givealittle.co.nz/northeastvalley

The opinions expressed in articles are the author's own and are not necessarily shared by the editor or Valley Project Team. Submitted articles may be edited at the editor's discretion.

We'd love to hear from you! Send us your local photos, stories, announcements, etc. Deadline for newsletter copy is the 15th of the month prior. Submissions later than the 15th cannot be guaranteed space. Please keep your contributions to 250 words or less.

(...continued from front page.) When you go to officially register to participate in Bike Aotearoa 2023, simply select the 'Valley Project' option. Bike bells, safety vests, pant snaps, and other swag will then be yours to collect from the VP! Make your way to www.lovetoride.net to register today. You can also register by attending any of the events listed below.

Is there anything we can do to encourage you or to help get you involved? Just sing out! If you don't have a bike, head to the Valley Cycle Workshop at 11 Allen Street here in North East Valley. They have a range of donated, pre-loved adult and children's bikes available for koha. The ultra-friendly mechanics there will help you choose a bike and get it ready for riding. If you already own a pair of wheels, you are also welcome at the shop to borrow tools for tune-ups or to get assistance with repairs. The Cycle Workshop is open on Tuesdays from 3.30 - 5.30pm and Saturdays 9.30am - 12.30pm. While you're there, pop along to the neighbouring Dunedin Electric Bikes shop. Perhaps you will choose to opt into the e-bike boom instead.



More gear, less gas! That's the goal, but there are endless reasons to travel by bike beyond reducing emissions; convenience, fitness, mental wellness, immunity, finances, maximising resale value of your car, relieving pressure on infrastructure, to acquaint yourself with local surroundings, to look cool, and for the fun of it, of course!

FREE BREAKFAST

Spokes local cycle advocacy group is hosting a free breakfast for cyclists. Waste-free event - bring your own bowl, spoon, and cup. Meet outside the Valley Project at 8am to bike there together.
WEDNESDAY, 15 FEBRUARY, 7 - 10AM. LOWER OCTAGON.

GROUP STREET RIDE

Beginner and kid riders OK. Mostly in bike lanes. Will adapt the route according to who turns up. Cancelled if raining.
SUNDAY, 19 FEBRUARY, 2 - 3PM. MEET AT THE VALLEY PROJECT.

MOUNTAIN BIKE TOUR

Join us an adventurous loop of popular mountain bike areas in the Valley. Mostly on established bike paths. Bike lifting and moderate fitness required. Cancelled if raining.
THURSDAY, 16 FEBRUARY, 6PM. 2+ HRS. MEET SIGNAL HILL CARPARK.

SCREEN-PRINTING

Bring along a 100% cotton t-shirt to have screen-printed with a limited edition cycling design. Gold coin donation, please.
SATURDAY, 4 MARCH, 2 - 3PM. VALLEY CYCLE WORKSHOP, 11 ALLEN ST.

READY, SET, CONNECT!

Neighbours Aotearoa is about connecting with the people around you in your neighbourhood and community. There are so many ways you and your neighbourhood can take part. It can be as big or small as you want to make it.

Throughout March you're encouraged to organise an activity or event around the theme 'Let's Share' which offers an opportunity for people to practise aroha (compassion) and manaakitanga (hospitality) with people they want to connect with. It also includes sharing whakaaro (knowledge) and pūkenga (skills). When we connect with our neighbours, good things happen!

Head to the website to meet your community connector, to register your event or activity, and to download an activity toolkit with editable invites and posters to help you with promotions.

www.neighboursaotearoa.nz/

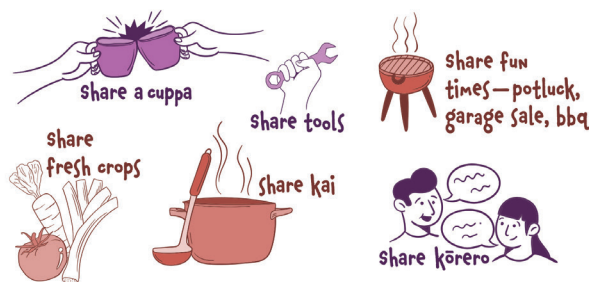
smiles	books	timebanks	clothing	music
appreciation	tools	working bees	walks	movie nights
quotes	book clubs	tip runs	gym passes	discounts
rides	spaces	child-care	recipes	artwork
carpools	skills	compost	boardgames	advice
stories	workshops	playtime	herbs	life hacks



Take part in Neighbours Aotearoa by sharing with your neighbours.

Neighbours Aotearoa 1-31 March 2023

Here are some ways you can take part



Neighbours Aotearoa (formerly Neighbours Day Aotearoa) is a community development initiative dedicated to growing, connecting and strengthening neighbourhoods across the country.

YOUR NEW KEEN-AS GO-TO AT THE VALLEY PROJECT!

Kia ora koutou. I'm excited to be the new manager at The Valley Project and look forward to working in your awesome community while supporting the wonderful staff here at the VP. I want to build on the great food resilience mahi and have just employed Tamsin Leigh for the Community Fruit Harvest initiative. Look out for your opportunity to get involved in the picking and redistribution of fruit, and for an upcoming apple pressing day. I'm also keen to build on the waste minimisation mahi and extend this to reducing The Valley Project's operational carbon emissions and encouraging Valley residents to find fun ways to do this, too. Surely you will join me in participation of this month's Aotearoa Bike Challenge. We are supporting the Valley Cycle Workshop in hosting some fun events during this time. Additionally, we are planning a revival of Creekfest where I hope to meet Valley residents! See you around! -- Jen Rodgers



Welcome,
Jen! 😊



A CALL FOR BOOK REVIEWS! I'd love to see a regular Valley Voice feature on your current reads, particularly those in the theme of community wellness pertinent to our region: biodiversity, gardening, food security, climate change, consumerism, etc. Flick our editor an email if you think your latest read is a winner and worth sharing!

NEV
ology!

THE BRIEF LIFE AND TIMES OF CHINGFORD POOL

Master Jack and I are making the most of the sunny days with some swinging and sliding at the Chingford playground. Last time we were there he had a good grovel around in the... what is that thing next to the playground? Old tennis court with spectator embankments? Old pool with only three sides? Amphitheatre for open-air performances?

The correct answer is (b). (Although [c] would be kinda cool). Herewith the tale of the brief life of Chingford Pool.

In the days before ubiquitous cars, residents of 'outlying suburbs' had to make a long trek to town or the seaside for a cool dip on hot days. Unless, that is, they had a local pool. The Dunedin City Council's newly acquired Chingford estate provided an opportunity for such leisure facilities and in 1939, a mere two years after Percival Neill had sold Chingford to the Council, a pool was built next to the new playground.

The "first-class facilities for swimming" – a swimming pool and adjacent paddling pool complete with log-cabin-esque dressing sheds – were opened in October 1939 to great fanfare. The Evening Star reported that 'the excitement among the smaller ones became so intense that several of

them wandered to the edge and had their first plunge, clothes and all, suffering no more harm than a good soaking'.

The swimming pool had a base of concrete slabs glued together with bitumen, and the sides were made of boulders from Lindsay Creek mixed with clay and covered in cement. It was an impressive 15 metres wide and 36 metres long and could be 1.2 metres deep at its shallow end and 1.8 metres at the deep end but was usually kept at half this depth to prevent nasty accidents. The pool was fed from Lindsay Creek.

Located for maximum sunshine, the pools proved popular in their first summer and were used by North East Valley School during term time, although the Otago Daily Times did point out that 'climatic conditions frequently prevented much instruction being carried out'.

It was only a matter of weeks, however, before the pool sprung a leak and had to be emptied and repaired. More cracks appeared through 1940 and were plugged with bitumen. Algae grew on the rough stone walls, discolouring the water, and the pool was a constant leaf magnet.

Letters to the editor started arriving and a petition from North East Valley residents in December 1940 made a 'strong protest regarding the condition of the swimming baths' and demanded they be put in

order. The town clerk agreed that the condition of the baths was 'certainly most unsatisfactory'.

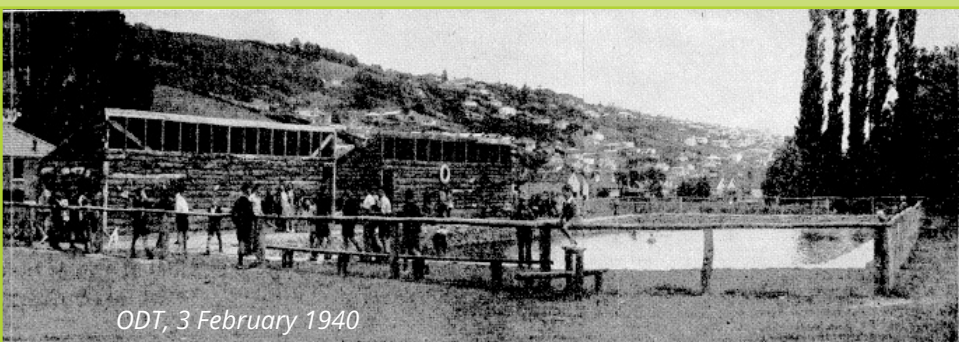
The pool was used for a few more years but by 1946 the superintendent of reserves considered it so unsatisfactory that it should be abandoned and by 1949 the pool sat empty, a 'striking example of civic bungling and indifference'. Ouch. The polio epidemic of 1948/49 didn't help, the Council unwilling to fill the pool and encourage a kiddy germ-fest.

My mum remembers the pool from when she took my brothers to play at Chingford Park in the late 1960s. There was nothing to stop anyone from falling in but she reckons there was always plenty of leaves and assorted flotsam in the bottom so it would have been a 'soft landing' for any clumsy kid. Ahhhh, the '60s.

In 2000, after 50 years as a giant fall hazard, it was thought best to put a proper fence around it. The Council planned to fill the pool and grass it over but after consultation it instead removed the wall between the creek and the pool and filled the other three edges of the pool to make gentle grassed slopes down to a remnant of the concrete bottom, producing the 'what is that?' feature we can enjoy puzzling over today.

Tennis (or outdoor performances) anyone?

-- Helen Jack



ODT, 3 February 1940



January 2023



LEAVE NO FRUIT UNPICKED!

Do you have more fruit on your trees than you can use? An abundance of currants? A profusion of plums? A bounty of beans? Or perhaps you have a few spare hours this summer to help pick, process, or preserve surplus produce?

Community Fruit Harvesting is a nationwide, volunteer-based effort to pick unwanted fruit from private properties and distribute it to our communities. While some have little access to fresh food, others have more than they can handle.

Here in Ōtepoti Dunedin, the group 'Our Food Network' (OFN) has built up a large database of backyard fruit trees belonging to folks who are unable to pick or use the fruit, but who are happy to share. OFN has taken responsibility for organising volunteers to go and pick that fruit and deliver it to Food Banks, to community pantries, or to individuals or community groups who take the time to process that fruit into jams, jellies, crumbles, pickles and preserves which can then be given out freely.

This is a massive job. We need lots of helping hands to make it work! If you'd like to help pick, process, or redistribute fruit around Dunedin, contact our coordinator on **021-027-31251** or email communityfruitotepoti@gmail.com. If you have, or know of, trees with unwanted fruit, please get in touch and we'll try to organise some help to get it picked. *(Please note that we cannot take damaged or rotting fruit, or fruit that is of a very low quantity or quality for eating or processing. We also cannot pick fruit that is not reasonably safe to reach).*

We have a facebook group you can join (Community Fruit Ōtepoti) which is a great place to keep an eye on upcoming events, like community picking and processing days (first one Saturday 5th March at Valley Project) and an Apple Festival at the end of April!

Until then, may we be blessed with bountiful crops to share, e ai ki te whakatauki: "Nā tō rourou, nā tāku rourou, ka ora ai te iwi." (With your food basket and my food basket, the people will thrive.) -- *Tamsin Leigh*



LAST CHANCE TO VOTE FOR THE BUG OF THE YEAR!

Voting closes February 13, 2023

 [bugoftheyear.ento.org.nz/](https://www.facebook.com/bugoftheyear.ento.org.nz/)

Sponsored by the Entomological Society of NZ



THE KAKANO - VALLEY PROJECT SEED SHELF FOR EDIBLE PLANTS

Bring in your surplus edible plant seeds, pick up something new for your garden and get growing your own kai!

Come browse our well stocked seed shelf at The Valley Project reception and find some seeds to take home and grow. We have loads of beans, greens, lettuce, flowers, and more! Everything is FREE, we only ask that you try to return seed to the shelf so that the cycle of giving and growing can continue. You may donate any seed bought or personally collected, such as a half empty (or half full?) packet of commercial broccoli seeds, or a paper bag of semi-threshed home-grown lettuce seed. Make sure you label it as best you can with as much info as you have: what it is, date harvested, etc. We have a few jars on-site that you can fill (plus some labels and pens) and a few boxes for packets.

If you are the kind of person who loves ordering and tidying, please feel free to volunteer some time organising the shelf in your favourite way - alphabetical order, anyone? It is intended to be a community project, so any kind of creative contributions are most welcome.

This is a Valley Kai and Ōtepoti Urban Organics initiative!



GREEN-FINGERED?

WE'D LOVE YOUR HELP IN OUR PURAKAUNUI PLANT NURSERY!



The Halo Project Source to Sea team is keen to hear from anyone who would like to assist with repotting 20,000 seedlings at their nursery in Pūrākaunui! **You can initially volunteer on Tuesdays, Wednesdays, and Thursdays between 8.30am - 4.00pm**, though once you are inducted you can drop in whenever suits you.

This is a great, achievable task that will set us up well for our autumn and winter planting season. Our goal for 2023 is to plant almost 100,000 plants around the North Dunedin area so your help in preparing these seedlings would be valuable! Everything you need will be supplied. Please note this work is done standing.

**REACH OUT TO JEANNE HUTCHISON BY TEXTING
022 095 0772**



OTTO'S BEEES

A PERFECT SWARM

A swarm of bees can be an intimidating sight, especially when on the move. Over the last few months you may have encountered exactly that – a large cluster of bees hanging in a tree or thousands of bees in the air, flying in a loose formation slowly heading somewhere. Why do honeybees do this?

Some social insects, such as bumblebees, German and Common wasps, and certain species of ants, all start their colonies in Spring when a queen emerges from winter hibernation to claim a suitable home. She then gets on with the task of establishing a new colony entirely by herself. The chances of success for any particular individual are not very high, especially if the weather conditions turn out to be unfavourable, but if enough queens start out, some will succeed and continue through the season to produce the subsequent generation.

Honeybees reproduce in a slightly different way – a queen is not capable of establishing a colony by herself. Instead the colony, based on certain environmental cues, can make the decision that the time is good for reproduction and initiate a process that results in swarming – a splitting of the colony into two or more separate ones. The colony will start raising some new queens, a process which takes a couple of weeks. Generally, when a new queen

is ready, the existing queen will leave with around a third of the bees. Before then, the worker bees partaking in the swarm will gorge on honey, taking as much food with them as they can. The swarming bees come pouring out of the hive and take to the air. The queen finds a place nearby for the swarm to settle, which can be anywhere from a branch of a tree to a fencepost or a wall.

For the swarm it now becomes imperative to find a new place to call home as soon as possible – the ideal being a protected cavity, such as a hollow in a tree or an accessible space inside a wall. The swarm sends out scout bees to look for suitable spots. Those that find one come back to the swarm full of enthusiasm and recruit further bees to come and check out the location. Once enough of the bees agree, the swarm will take to the air again, this time to move to their new permanent home.

Once in their new home there is much to do for the colony to be able to get sufficiently established to make it through the next winter. Priority number one is to start building new honeycomb, as without this they cannot rear any brood (new bees) or store any food. They need to be able to store up enough food while it is



A swarm, settled in a fruit tree

readily available to last them through the winter months when it is mostly too cold to go out to forage and flowers are few.

The cues that trigger swarming in honeybees include food availability, space, weather patterns and seasons. Anyone who has tried beekeeping in Dunedin will know that bees are very keen on swarming! Our variable weather and an abundance of high quality food, especially pollen, throughout Spring and Summer make for ideal conditions to encourage honeybees to reproduce. This is why swarms of bees are not an uncommon sight here. The best thing to do if you see one is to give them some space and see if you can get hold of a local beekeeper to come and collect it (the Dunedin Beekeepers Club is a good option). That way they will end up in a suitable new home with the added advantage that they will be looked after if they cannot manage to get everything they need for themselves. -- Otto Hyink

Otto breeds bees, sells bees & bee products, provides beekeeping advice, and is involved with research programmes based at the University of Otago. Facebook: @Ottos-Bees



**dalmore
GARDEN**

GARDENING UPS AND DOWNS

For people looking at photos of beautiful vegetables from the community garden, it's easy to think the rewards are huge. They can be for some crops, but every so often a lot of what we sow and plant just doesn't come to much, if anything! It's incredibly frustrating, but it's important to know that some seasons are better than others, some crops need more attention than we can give once a fortnight, and disease and insects can all play havoc on growth and development.

For us it was a rough early summer. Lots of rain, then warm, then wet. While it was good for lettuces and berries, which did very well, the zucchini developed a powdery mildew. And our broad beans looked fantastic early on but developed severe rust before maturing. We were left with hardly any. Broad beans have always been a reliable crop on the hill, so it was especially disappointing. Additionally, white butterflies are attacking any brassica seedlings, so who knows how many broccoli and cauliflower will get settled in for winter. Luckily, butterflies don't seem to like kale!

Nothing, of course, will kill the Jerusalem artichokes/sunchokes! We are getting a good crop of Speedo carrots which we grew from seed donated by Caithness Farms in Waimate. Best carrots ever! Caithness Farms sell their veges at the Farmers Market here, so check them out.

So, is it all worth it? Totally. Just don't be fooled by pictures of the successes, and expect a few disappointments along the way! -- Lynn Vare



DALMORE RESERVE COMMUNITY GARDEN WORKING BEES

Sat. 11 Feb. 10am	Sat. 11 Mar. 10am	Sat. 14 Apr. 10am
Sat. 25 Feb. 10am	Sat. 25 Mar. 10am	Sat. 28 Apr. 10am

N.E.V. COMMUNITY GARDEN WORKING BEES

Sun. 5 Feb. 1pm	Sat. 25 Feb. 9.30am	Sun. 19 Mar. 1pm
Sat. 11 Feb. 9.30am	Sun. 5 Mar. 1pm	Sat. 25 Mar. 9.30am
Sun. 19 Feb. 1pm	Sat. 11 Mar. 9.30am	Sun. 2 Apr. 10pm



1500 VOLUNTEER HOURS PAY OFF WITH REDEDICATION CEREMONY

Around 70 guests and facilitators were in attendance at the long anticipated rededication ceremony of the Upper Junction WWI Memorial. After multiple postponements due to complications of the coronavirus pandemic, the ceremony at last took place on November 29th, 2022.

Somber weather fittingly set the scene for commemoration of seventeen fallen soldiers, first memorialised in 1919 at the site of their former Upper Junction school.

Little remains of the school itself having burnt down in 1945, and the original memorial eventually fell to ruins. Over the last three years an immense effort has been made to restore and revive the historical site located on the forked, sharp corner of North Road and Clava Street. Blink and you might miss it! The recent installations of a small wooden bridge and gravel footpath leading to a flagpole have improved its accessibility and visibility from the adjacent roadway.

In addition to these upgrades, the Otago Military History Group, Dunedin RSA, and dedicated locals laboured together in vegetation clearing, landscaping, and planting. Plaques, plinths and garden benches were given face-lifts, too. In the background of physical tasks, historical information on each soldier was collected and formed into printed profiles to accompany their individual plaques.

The Upper Junction memorial site is now more distinguished than it ever was in its 104-year existence. The rededication ceremony was not solely a celebration of achievements in

refurbishment, however. The marked event was mainly an honouring of New Zealand's brave dead, specifically those whom once shared our northern Dunedin residence. Thanks to a large party of devoted contributors in recent years, the space was fit for purpose once again.

The ceremony opened with a mihi whakatau and a history brief. Padre Captain Aaron Knotts delivered the rededication, including an anointing of oil. A wreath was laid by former Governor-General and Chief of NZ Defence Force Sir Jerry Mateparae. It was rested upon a memorial plaque at the base of a newly installed flagpole, a gift from the Dunedin RSA.

A selection of North East Valley Normal students followed with customary placement of rosemary sprigs at all seventeen memorial plaques. The herb's scent is said to stir and strengthen memories and therefore symbolises remembrance. With the assistance of Sir Jerry, a kōwhai tree was then planted by a couple young descendants. Before the ceremony closed in blessing, Ralph Miller trumpeted the Reveille (wake-up call) and a moving rendition of the Last Post.

All in attendance were invited to a lovely afternoon tea down at the NEVN School hall where stories, history, and memories were warmly exchanged over cookies and cups.

Community members are encouraged to visit the Upper Junction war memorial site, easily reached by a short, northbound drive along North Road. The panoramic views alone will draw you into a state of reflection. -- *Krysha Brzuza*



UPPER JUNCTION HONOUR ROLL

Private Bruce Harvey - died 1915 aged 23, buried in Gallipoli
 Sergeant Alexander Paisley - died 1915 aged 22, buried in Gallipoli
 Private Adolphus Brennan - died 1915 aged 18, buried in Wellington
 Private William Brennan - died 1916 aged 21, buried in France
 Rifleman George Shaw - died 1916 aged 26, buried in France
 Private John Williams - died 1916 aged 19, buried in France
 Trooper Carl LaMont - died 1916 aged 23, buried in Egypt
 Gunner John Brennan - died 1917 aged 24, buried in Belgium
 Trooper Joseph Collins - died 1917 aged 33, buried in Israel
 Private William Winter - died 1917 aged 27, buried in Belgium
 Lance Corporal Andrew Paisley - died 1917 aged 22, buried in Belgium
 Private Godfrey Barnett - died 1918 aged 23, buried in France
 Lance Corporal Richard Brennan - died 1918 aged 21, buried in France
 Private Andrew Donald - died 1918 aged 25, buried in France
 Private Edward Sainsbury - died 1918 aged 29, buried in Dunedin
 Private William Aitchison - died 1919 aged 39, buried in France
 Private Harold Paisley - died 1919 aged 21, buried in Scotland

Learn more about each soldier at the Upper Junction Memorial





Computer Repairs & Upgrades
Computer & Software Sales
Phone & Tablet Repairs
Custom Builds



www.rlsystems.co.nz
021 666 425

WEB & SOFTWARE DEVELOPER

I BUILD MODERN,
FUNCTIONAL WEBSITES
AND TOOLS FOR
BUSINESSES AND
PROJECTS.

[HTTPS://LIAMSC.COM](https://liamsc.com)
LIAM@LIAMSC.COM



Peter Waymouth
Consulting Arborist

Professional pruning of trees

greentrees.co.nz
027 432 9646



Electric car charging systems
Solar system checks and cleaning
Off grid solar design build
Custom lithium battery manufacture

03 395 6565
ev-lution.co.nz



ONE EARTH ELECTRICAL



Require an electrician to
complete work within your
home? We provide expert
advice and service.

Andrew Parkinson
027 266 3906

ask.one.earth@gmail.com
www.oneearthelectrical.co.nz

BACKBLOK GARDENS & LANDSCAPES

- Section clearing
- Tree pruning and shaping
- Planting plans
- Custom planter boxes
- Timber retaining walls

021 0234 49 38
www.backblokgardens.nz

Need a painter?



- inside or out
- no job too small
- waterblasting available

COMPETITIVE RATES & QUOTES
Contact Bryan:
473 7488 or 021 108 1860
porteous.a.b@gmail.com



**COMMERCIAL & INDUSTRIAL
ELECTRICIANS**

Instrumentation
Automation
Safety Upgrades
Local Computer Repairs

New!

controlfocus.co.nz

03.395.6565

DALE WILKINSON BUILDER

Local, loyal and licensed builder
practitioner at your service.

No job to big or small, quotes
available.

Please call
021 867 896

ADVERTISE YOUR BUSINESS HERE

\$40 monthly for this space
Open-ended contract
Discounts for non-profits
Design yourself or use our
in-house graphic designer
voice@northeastvalley.org

**THE PRODUCTION OF THIS
COMMUNITY NEWSLETTER
DEPENDS ON YOU!**



#8 NORMANBY/ST. CLAIR BUS ROUTE UPDATE

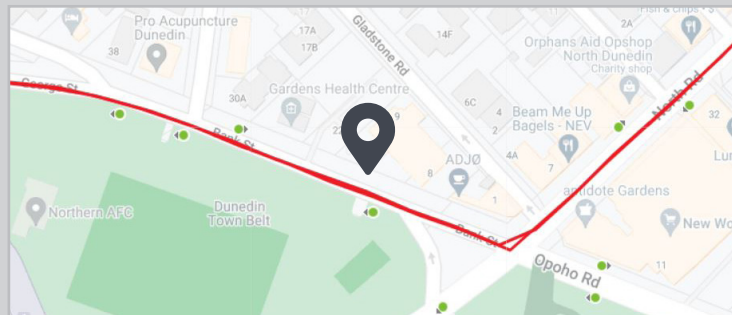
Bus services are returning to full timetable from the first of February! Charlotte Flaherty of the ORC has kindly provided the Valley Project with an update on North East Valley's popular #8 bus route, confirming an increase in its frequency.

The updated timetable information will be on the Otago Regional Council website (orc.govt.nz) where passengers would usually find their timetable information for the #8 route Normanby - City - St. Clair. The updates will also show on the Transit App (free to download from <https://transitapp.com/>) and at the e-stops at the Dunedin Hub.

There may be cancellations as the #8 bus eases into the more frequent timetable. Passengers are urged to check the website for alerts before setting out on their trip, or to look for notifications on the Transit app. The Orbus Dunedin Facebook page (facebook.com/OrbusDN/) will carry any major updates about the networks or traffic works that may create diversions.

ORC also has a free number where passengers can talk to someone about their particular journey: **0800 672 8736**.

And lastly, there's a new bus stop in place for routes #8 and #11 near the Gardens. Please look out for the new stop, which is at 14 Bank Street (outside Pet Doctors) instead of 17 North Road.



www.orc.govt.nz/public-transport/dunedin-buses/check-your-timetables/8-normanby-city-st-clair



COMMUNITY CLASSROOM

The Dunedin Community Classroom will be running from March 3 - 26 at various wonderful locations around the city.

**ELECTRIC BIKES • GARDEN WALKS AND TALKS • BEEKEEPING
TAI CHI • YOGA • MINDFULNESS • LOOM WEAVING
FERMENTED FOODS • UPCYCLING • AND MORE!**

Download the programme from
www.communityclassroom.co.nz/

Physical copies will be found in the Dunedin Library.
If you would like to be emailed the programme contact
communityclassroom.nz@gmail.com





RAD ON A ROLL RECYCLING LAPTOPS

The Valley Project would like to share an update from our friends at Recycle A Device (RAD), a nationwide initiative matching donated and refurbished laptops to those in need of them. The programme is preparing to ramp up efforts in Dunedin now that DCC funding has been granted.

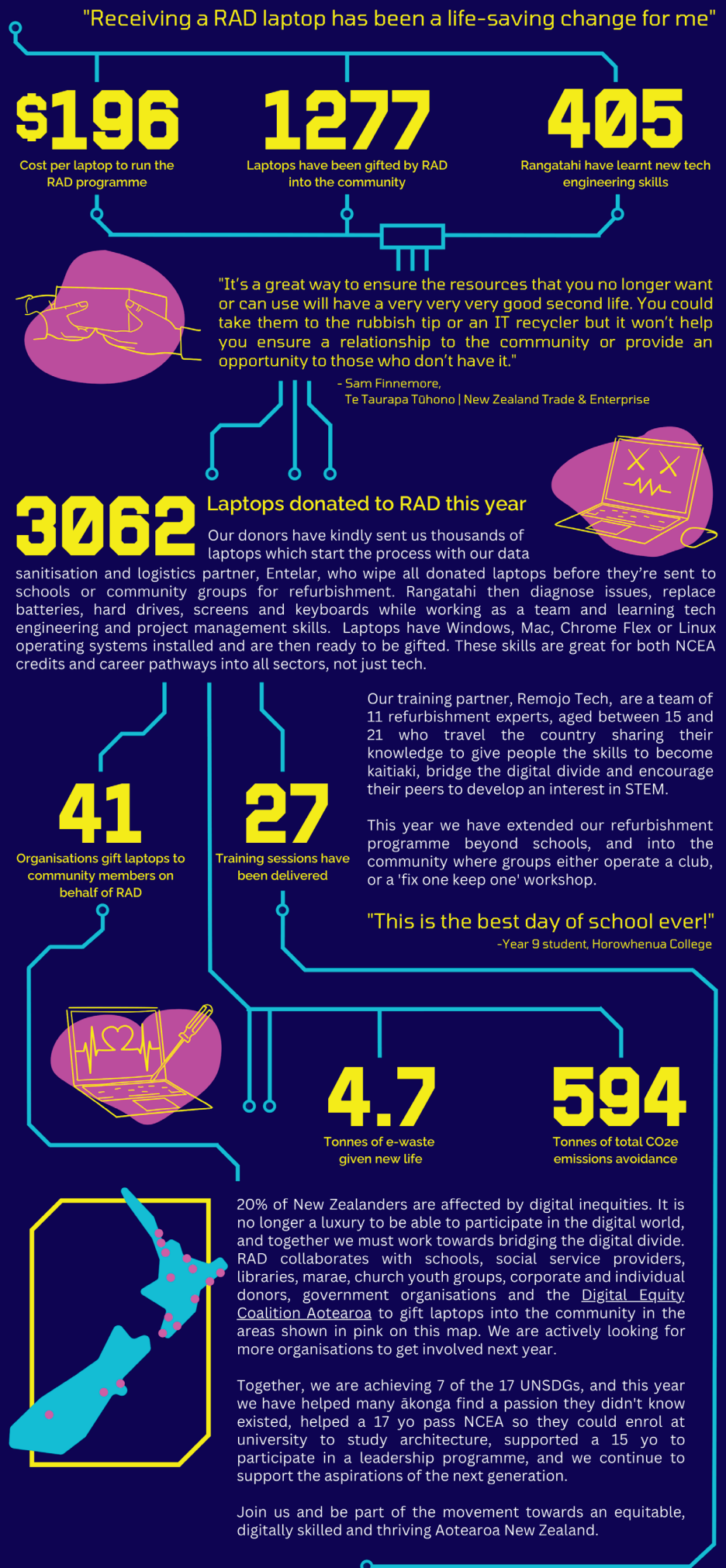
"In 2022, RAD received more than four times the amount of laptop donations than in 2021! 4.7 tonnes of e-waste were diverted from landfill! We also worked with 405 students across 27 training sessions. Take a look at the neighbouring infographic for more impressive stats. 🍷

Last year saw a lot happen for RAD - we've been celebrating awards, wins, and shortlistings, running online repair events, participating in TechWeek and welcoming new donors, refurbishers, schools and community groups to the programme. We now can count NZ Post, One Percent Collective, Nelson City Council, Ministry for Pacific Peoples and others amongst our funders, and Foodstuffs, Ministry of Education, NZ Customs, Stuff, Kiwibank and New Zealand Trade and Enterprise (as well as many more!) amongst our device donors - it's awesome to get so much support.

We are scaling up in 2023! Our goal is to gift 5,000 laptops into the community, which means our operating budget will hit \$680k. At this level of growth and impact we will be asking for not just device donations, but also for a contribution to our bottom line, as without cash, we aren't able to get laptops to those who need them.

At a cost per laptop of \$196.90, Recycle A Device is a very cost effective, socially and environmentally friendly way to ensure more young people are able to actively participate in their education, the economy and everyday life. We want you to be part of this growing movement in Aotearoa, and together we will work towards empowering rangatahi to fulfill their potential!" -- *Ngā mihi, Bronwyn, Rebecca, Eva, Chris and the RAD team.*

Becks from RAD participated as a volunteer in the Valley Project's Spring Clean last September. From the waste-minimisation event she accepted 15 laptops into the RAD programme. Becks would like to express gratitude to the community for their support!



www.recycleadevice.nz

VOLUNTEER WITH HOSPICE – MAKE A DIFFERENCE IN YOUR COMMUNITY!

VOLUNTEERS NEEDED FOR RECEPTION, CLEANING, AND KITCHEN SHIFTS

We need more volunteers to help us at Otago Community Hospice's headquarters in North East Valley.

The Hospice relies upon a significant volunteer workforce without whom we could not provide the Otago-wide specialist palliative care service for hundreds of terminally ill patients and their whānau.

We need volunteers for reception, cleaning, and kitchen shifts after losing a number of volunteers during the Covid lockdowns. In return we offer excellent training and a fabulous environment to volunteer in.

To find out more come along to our next information session on **Wednesday, February 22nd from 6 - 7:30pm**. Venue TBA. This session is all about ensuring that you find a role within Hospice that fits you and your interests and timetable.

We are needing volunteer positions filled for:

- 📌 **RECEPTION:** evening and weekend. This involves welcoming people as well as answering the phone. Weekday shifts are 5 - 7pm and weekend shifts are 9am - 12noon, 12noon - 3pm, and 3 - 6pm.
- 🧹 **CLEANING:** weekends. This involves cleaning main areas and patient rooms. Approx. 2-hour shifts on Saturday/Sunday mornings.
- 👨‍🍳 **KITCHEN:** volunteer alongside cook in the mornings (9:30am - 1:30pm) or a solo shift in the afternoons (3 - 6:30pm).

We ask that volunteers undertake, at minimum, one shift a month and, at maximum, one shift a week.

If you are still interested after the information session, you can apply to attend the area-specific training day:

KITCHEN VOLUNTEERS: Saturday, March 11th

RECEPTION/CLEANING VOLUNTEERS: Sunday, March 12th

For more details or to book your place at the info session, email volunteer@otagohospice.co.nz

Please note, as we are a health provider, all staff and volunteers at North Road must wear masks and need to be vaccinated against Covid-19 (2 vaccinations plus at least one booster).



SPOTLIGHT ON HOSPICE KITCHEN VOLUNTEER: MAUREEN MURDOCH

Maureen Murdoch retired in March 2022, and by August that year she had joined our volunteer army as a kitchen assistant. She loves being part of Hospice team!

"I had always wanted to give back to Hospice since having friends use the service four years ago. It was at this time that I realised the extent of the Hospice service and how much support it provides, not only to the patient but also for the family; they help take the pressure off families."

Since joining the Hospice volunteer crew, she has been surprised by the level of Hospice support happening in the community, and that the Inpatient Unit is just a small part of the service.

"It's amazing how hospice support patients and families 24/7 – no matter where those patients are."

Maureen says it's wonderful to be able to give back to such an impactful service.

"I like that I'm giving back; it's good for me to do and good for others to have."

Maureen believes it's really important for retired people to have something to do when they wake up in the morning. She has a busy schedule playing golf, line dancing, and looking after a six-year-old boy with Down Syndrome (whom she met in her previous job in childcare and formed a special relationship with). But she keeps Wednesdays free for Hospice, doing a regular fortnightly afternoon shift and filling in when required on Wednesday mornings.

Check out how you can become part of the team by signing up for our Volunteer Information Session on **Wednesday, February 22nd from 6-7:30pm**. Venue TBA.

Email volunteers@otagohospice.co.nz to find out more.

"I like that I'm giving back; it's good for me to do and good for others to have."



TUESDAY, 7 MARCH 2023 IS CENSUS DAY KO TE RĀTŪ 7 POUTŪTERANGI 2023 TE RĀ TATAURANGA

The census is a nationwide survey that happens every five years to understand more about life in Aotearoa New Zealand and how it is changing. By law, everyone must take part in the census. You can complete the forms as soon as you receive them from Stats NZ. Your identity is kept private and confidential.

www.census.govt.nz/



art, craft & music

ART CLASSES

For all levels. Casual attendance welcome, tutor Anneloes Douglas, community rooms, 10am–noon, Thur. ☎ 027 307 7034 📞 467 9993
✉ anneloes.douglas@xtra.co.nz

ART CLASSES

Continuous class, newcomers welcome, 1–3pm, Wed, community rooms; 1–3pm, Thurs, St Peter's Church Hall, Caversham; 7–9pm, Thurs, Logan Park High School, \$15 per session. 📞 Friederike 482 2025

ART FIBRE DUNEDIN

Bring lunch and requirements, 10am–2pm, second Sunday of each month, community rooms.
☎ Megan 027 245 8605
🌐 artfibredunedin.blogspot.com

DIAL-A-PIPER

Available for any functions including birthdays, weddings, funerals, Haggis Address, etc. Feel free to contact me to discuss your function. Can travel.
📞 03 473 0045 or ☎ 027 473 0060
✉ thepiper50@gmail.com

DRUMMER AVAILABLE

Middle age drummer into all sorts (psych rock, dream pop, reggae, ambient, classical, techno, "world" etc.) looking for band/musicians. Anything with soul, groove, and edge. Paul ✉ hoani76@hotmail.com

DUNEDIN FIDDLE CLUB

Mostly Celtic tunes, mostly fiddles. New players always welcome! Wednesdays 7.30pm at The Valley Project community rooms. Just drop in or ✉ anna.bowen1@gmail.com

FOLK CLUB OPEN MIC NIGHT

Songs, tunes and convivial company every Thursday from 7.30pm. Come and join the supportive circle to play or listen. Dunedin Folk Club, 80 Lovelock Ave. ✉ info@nefc.org.nz

KIDS ART CLASS

Thinkit Art offers dynamic and enriching after school term art classes for 7–15yo. Focus is on enriching creativity & exploring who you are as an artist. Book Now: Kiri Scott Artist – Oniyonkid.
📷 @thinkitart ☎ 021 118 9882
📱 @thinkitartfeuerstein.art
✉ Thinkit.fie@yahoo.com

LEARN TROMBONE

From winner of Dunedin Youth Jazz Festival best trombone, and Otago Rockquest best musician - contact Finn Barr ☎ 027 356 2881 or ✉ fin.mckinlay@gmail.com

MUSIC LESSONS

Celtic style flute, tin whistle, and guitar lessons by Rennie Pearson.
✉ rennie.pearson@gmail.com
🌐 renniepearsonmusic.com

MUSIC LESSONS

Guitar, drums, singing, with professional musician. All ages. Contact Bevan: ☎ 027 363 1376 or ✉ bevan37@hotmail.com

PAD-MAKING WORKING BEE

Interested in plastic-free period products? Like to sew? Learn to make sustainable period products for you and whanau. Contact ✉ sewon@christinekeller.co.nz

SOUNDS NOR'EASTERLY

Do you enjoy singing with a group? Why not join your local community choir? All ages and abilities welcome. DNI design lobby every Tues, 7.30–8.45pm. Email Marion for info ✉ marion.okane68@gmail.com

STAND-UP COMEDY

Open mic at Inch Bar, every Tuesday and penultimate Wednesday. Comedy workshop Mondays 5–7pm at George Street McDonalds. Open to all skill levels. Contact ✉ reuben@dunedincomedy.co.nz

UKULELE SESSIONS

Wed, 7–8.30pm, Valley Baptist Community Centre, 280 North Rd. Just turn up or text Adrienne ☎ 027 389 2574 for more info.

community

ALZHEIMERS OTAGO

If you are concerned about your own memory loss or supporting someone with dementia, we are here for you. Contact us about our free support for individuals, carers and families. 📞 03 471 6154
✉ Still.Me@alzheimersotago.org.nz
🌐 www.alzheimersotago.org.nz

BALMACEWEN LIONS CLUB

Meets 2nd & 4th Mondays at Otago Golf Club: 125 Balmacewen Rd, Dunedin. New members welcome! Contact Secretary Russell Hancox: 📞 03 467 5126 (evenings)

BIBLE HOUR

Friendly small group Bible learning over morning tea, Sun, 9.30am, DNI (tech area) during school terms. All welcome, free. ☎ 020 4079 5727 or 🌐 dunedinchristadelphians.org

BIKE WORKSHOP

Get help, use our workshop. Bikes available for koha, 3.30–5.30pm Tues, and 9.30am–12.30pm Sat. Valley Community Workspace, 11 Allen St. Email Peter ✉ peterd0n@yahoo.com

BURNS RESERVE

Interested in learning more about this Reserve featured in "Forgotten Wilderness" by Bruce Munro published in the ODT Weekend Mix on 20 August 2022? Contact ✉ burnsreserve@gmail.com

COMMUNITY ACCOUNTING

Dunedin Community Accounting provides free accounting training & advice for non-profits in Otago. For more info call ☎ 0800 113 160, ✉ kiaora@dca.org.nz 🌐 www.dca.org.nz

COMMUNITY PATROL

Dunedin North Community Patrol. Assisting Police to ensure our communities are safe to live in. Volunteers welcome. Call Garry for more info: ☎ 027 364 1485

COMMUNITY STUDY CIRCLE

Baha'i Spiritual Training. Develop your capacity to offer service to your community as a result of exploring spiritual concepts and how to apply them to everyday life. Strictly no charge. Ring or text Ash: ☎ 022 615 6115

DALMORE RESERVE COMMUNITY GARDEN

Join us fortnightly at the garden on Allenby Ave., Pinehill. All welcome. Tools provided. Check Facebook for dates/times or ✉ dalmorecommunitygarden@gmail.com

DUNEDIN CURTAIN BANK

Open again for 2023! Got a StudentID, Community Services card, or SuperGold card with CSC? See us at 174 Princes St. 9–4pm Mon–Thurs. or apply online: 🌐 www.dunedincurtainbank.org.nz

ENABLING LOVE

Looking for friendship & social connection? 18–65 years welcome to weekly coffee group at Otago Museum Cafe, Thurs, 1–2pm. More at 🌐 enablinglove.nz or email Joshua for venue: ✉ enquiries@enablinglove.nz

FRUIT & VEGES NFP

Fresh fruit and veges at wholesale prices with All Saints Fruit and Veges. Small, med, family weekly bags. Order at St Martins, 194 North Rd, Thur, 4.30pm, or sign up online: 🌐 fruit.vege.allsaintsdn.org.nz

LEGAL ADVICE

Free legal advice from Community Law Otago, available by appointment. Legal advice by qualified lawyers, practical solutions. 📞 03 474 1922 or email ✉ reception@dcl.org.nz to make an appointment.

MEN'S PROBUS

NEV bowling club, 10am, 2nd Mon ea. month, new members welcome. 📞 Peter 455 1256, ✉ peabee@xtra.co.nz or 📞 Don 473 7544

MISSING PET BIRD

Young albino ringneck parrot. Pure white with a red beak and very friendly. Missing from Dalmeny St. ☎ 022 649 5606

NEED A JP?

The Valley Project offers walk-in JP services for affidavits, document certification, KiwiSaver withdrawals, immigration matters, etc. Every Sat. 11am – 1pm.

NEIGHBOURHOOD SUPPORT

Create safer, more caring communities. For info and local contacts 📞 Davis 456 0857 or ☎ 027 476 6047 or email: ✉ coordinator@nsotago.nz

NEV COMMUNITY GARDEN

North East Valley Community Garden, directly behind NEV school. Pay us a visit! We meet every wknd: 1st & 2nd Sat. 9.30–12pm, 2nd & 4th Sun. 1–4pm.

NORTH DUNEDIN SHED

New members welcome. Open Wed and Sat mornings, 35 Bonnington Street, over the bridge. Find us on: 📍 North Dunedin Shed Society Inc.

NEV JUSTICE OF THE PEACE

Pine Hill resident, Colin Lind, available for JP services. Flexible days and hours. 📞 03 473 7174 ✉ colinlind@hotmail.com

OP-SHOP VOLUNTEERS

Cat Rescue Dunedin is seeking volunteers to help in our North Rd. Charity Shop. Please call into shop Tues. mornings to speak with manager or contact Raewyn: ✉ raewynalexander@gmail.com

VOLUNTEERS NEEDED

CREST train at the Botanic Garden. Can you help? Volunteers needed for driving, ticketing, commentary, maintenance. 🌐 cresttrides.org.nz or ☎ Rodger 027 471 4902

WILD DALMORE RESERVE

Help us protect and restore the native biodiversity of Dalmore Reserve. We meet most Sunday afternoons. Entrance at 20 Allenby Ave, Pine Hill. Contact us through 📍 Wild Dalmore Reserve or phone/text ☎ 021 206 3593 for info.

employment

BEDTIME SUPPORT POSITION AVAILABLE

Seeking person w/initiative to assist a young disabled man with evening routine: personal care & household tasks. Must be physically strong as transfer assistance required. 8.45–9.45pm, 4-on/4-off roster. Position based in NEV. Applications w/CV + references to ✉ Tessa.Brown@ccsDisabilityAction.org.nz

WORKBRIDGE

A FREE specialised service assisting work-ready people with any health conditions/learning difficulties/injuries to find suitable employment. All aspects of vocational prep provided – CV's, cover letters, job search, interview skills, placement. Once employed, support continued 12 months more. ☎ 0508 858 858 or visit 🌐 workbridge.co.nz

fitness & health

ADULT YOGA CLASSES OPOHO SCHOOL

Fiona Johannessen is an experienced

yoga teacher of all ages and levels. If you're needing time to focus on breathing and moving mindfully this might just be for you! Tuesdays 7.30–8.30pm (school term). \$10 casual rate. All levels welcome. ✉ Fiona: sweetfee77@gmail.com

BALFOLK DANCE CLASSES
Nga Maara Hall, 63 North Road, Tuesdays 7–8.30pm. \$10 per class. No bookings required. Get on the mailing list for details:
✉ balfolkdunedin@gmail.com
☎ Michael 021 050 5882

DUNEDIN BMX CLUB
Race night, Forrester Park BMX track, 5:30pm, Thursdays.

BELLEKNOWES GOLF CLUB

Green fees \$15
\$10/player after 4pm

Come & enjoy our fantastic 9-hole golf course on Lawson St. Spectacular views over the city. Call Secretary, Christina King
☎ 03 467 9499

FOLK DANCING FOR FUN
Valley Baptist Community Centre, 270 North Road, 10–11.30am, Fridays, \$4. ☎ Yvonne 455 2406, ✉ stureid1@yahoo.co.nz

INDOOR BOWLS
Play indoor bowls at the NEV Bowling Club, 139 North Rd, Thurs, 1.30pm start. ☎ Terry Boylan 473 0049

KUNG FU
Fitness, discipline and self defence. Classes for 7–12 years Wed, 5–6pm, Sun, 3–4pm, teen & adult classes, Wed, 6–7.30pm, Sun, 4–5.30pm, Sacred Heart School, 63 North Rd. Contact Kenneth ☎ 021 0242 38 ✉ Dunedin@shaolinkungfu.co.nz

MASSAGE FOR WOMEN
with Uschi Heyd. Book your session online ☎ www.kindliving.co.nz or call/text ☎ Uschi 027 360 0238 Mention the Valley Voice to receive a 10% discount on your first massage.

ORTHO-BIONOMY
In pain or discomfort? Had surgery or injuries? Ortho-Bionomy is a gentle way to help you in the process of maintaining balance or accessing your resources during your recovery! For info & bookings: ☎ juliafast.nz

PARKRUN
Free, weekly timed 5km run/walk, Sat, Botanic Gardens. Meet at café, 8am summer, 9am winter. Go to ☎ parkrun.co.nz for more info.

SENIOR MOVEMENT AND BREATHING CLASS
Gentle physical exercises, combined with breathing awareness. Suitable for older adults or those looking for slow, mindful approach. Thurs. 9.30–10.30 at Valley Baptist Community Centre lounge. \$8 unwaged/\$10 waged. Classes restart February 9th. Register:

Fiona ✉ sweetfee77@gmail.com ☎ 021 0377 911. Classes restart February 9th.

STEADY AS YOU GO
(Age Concern) Gentle balance and strength exercises, Valley Baptist Community Centre 10.30am–11.30am Mondays, and Pine Hill School Library 11am Thursdays.

TANNOCK GLEN
The 3.5 acre garden of the Dunedin Rhododendron Group is situated in Torridon Street, Opoho. Members of the public are invited to visit at any time. Dogs permitted on a lead.

THREE LEFT FEET
Social dance group, no experience or partners necessary. European dance – folk and traditional, \$5 or \$7.50 per couple, Nga Maara hall, 6–7pm, Thursdays. ☎ Marilyn 027 446 3358

YOGA IN THE VALLEY
Instructor Adair Bruce, 6–7pm, Mon. & Fri., DNI designspace; 9.15–10.15am, Mon. & Wed., community rooms. \$10 waged, \$8 unwaged. More info ✉ adairbruce@hotmail.com

ZEN MEDITATION
Traditional Zen for beginners and those experienced. All welcome. 7pm Thur. Quaker Rooms, 15 Park St., Dunedin North. Koha please. 6wk beginners courses through the year. 7-day retreat on Quarantine Island annually. ☎ Glenn 473 6256

for families, kids, and teens

AURORA TAMARIKI EARLY YEARS CARE AND KINDERGARTEN
Childcare for 0–5yr-olds inspired by Rudolf Steiner and Emma Pikler, offering homely rhythms, seasonal songs/stories, and natural space for children to learn and grow. Organic vegetarian kai provided. 351 Pine Hill Road. ☎ auroratamariki.co.nz

DUNEDIN CITY TOY LIBRARY
A vibrant toy library for children from birth to 7 years. Huge range of toys, ride-ons, dress-ups, puzzles, and games. Valley Baptist Community Centre, 270 North Road, 3.15–4pm Wednesdays and 10–11.30am Saturdays.

DUNEDIN RUDOLF STEINER PLAYGROUP
Te Whare Ako Marie. A sanctuary for creative play for children from birth to kindergarten. A place of peace and friendship for parents. Groups meet weekly, term time. Contact us for times and days ☎ 471 2163 or ✉ dunedinsteinerplaygroup@gmail.com

FARSI LANGUAGE PLAYGROUP
For those wishing to immerse their young ones in the language. Playgroup runs fortnightly on a Sunday afternoon. ✉ farsi.playgroup@nevbctrust.org

ISLINGTON EARLY CHILDHOOD CENTRE
Where children are cherished and individuality is recognised and valued. Independent, non-profit centre offering high-quality education for 2–5-year-olds, small session sizes of up to 20 children, a well-resourced play space and new nature playground. Extended hours: Mon–Fri 8.30–2.30 from Jan 2023 following school terms. Book a visit to discover this beloved treasure, hidden in the heart of the Valley. ☎ 03 473 7490 ☎ islington.org.nz ✉ islington.ecc@gmail.com

LEGO AND CRAFT CLUB
Valley kids years 6–8! Valley Baptist Community Centre on 3rd Wednesday of every month, 3–4.30pm (excl. school hols). Low-tech club is the opportunity for you to get creative w/Lego & craft. Also books to read/borrow with a Dunedin Public Library card.

MAINLY MUSIC
Leith Valley Church, Malvern St, Wednesday 10am, \$4. Contact: Fran ☎ 467 9208 (Leith Valley Church Phone No) or ☎ 027 456 1188

MT CARGILL GIRLGUIDES
Pippins, brownies, guides, & ranger groups in the valley. ☎ 0800 222 292 or ✉ info@girlguidingnz.org.nz

NEV NORMAL SCHOOL PTA
Seeking new members for the 2023 school year, especially a treasurer! Fundraising ideas needed to help kids & kura. ✉ nevn.pta@gmail.com

NEV PLAYGROUP
For 0–5yrs, variety of experiences to enhance development of your child and meet other local young families. Free morning tea and lunch provided for adults. Please supply child's morning tea. Valley Baptist Community Centre, 270 North Rd, 9am–12pm Wed. ✉ nevplaygroup@gmail.com

NORTH GAME DEV CLUB
Intermediate tamariki learn to build their own video games. Tuesdays, 3.30–5pm at the Valley Baptist Community Centre. ☎ @com2tech ✉ office@com2.tech ☎ com2.tech

OPOHO PLAYCENTRE
Nurturing play space for 0–6year olds where children and their whanau attend together. Focus is on child-led learning through play. Make friends, play, learn, & grow. 3 free visits. 28A Signal Hill Rd. Mon–Fri 9am–12pm, school terms. ☎ opoho.playcentre ✉ opoho@playcentre.org.nz or ☎ 027 880 2365

OPOHO SCOUTS
Keas, 4–5pm, Tues; Cubs, 6pm–7.30pm, Thur; Scouts, 6–8pm, Wed. Opoho Scout Den. ✉ Shane: opoho@group.scouts.nz

SPACE FOR YOU AND YOUR BABY
Programs run by registered ECE teachers supporting families through

their 1st year with new baby. School terms at Valley Baptist Community Centre. ☎ 021 150 9165 or ✉ space.valleybaptist@gmail.com

SUNDAY SCHOOL
Variety of classes with stories, crafts, songs, and more. Ages 4–18yrs, 9.30am Sun (term time only), DNI (tech area). All welcome! No charge. ☎ 020 4079 5727 or go to ☎ dunedinchristadelphians.org

TECHTIME
Primary ages 7+. Work on IT tutorials. Wednesdays, 3.30–5.30pm at the Valley Baptist Community Centre. ☎ @com2tech ☎ com2.tech ✉ office@com2.tech

further education

BEGINNER ENGLISH FOR CHINESE
Join our beginner English conversation group for senior Chinese new to English language. Shared meal. Small contribution to costs. Great way to improve simple conversation. No English necessary. Tian: ☎ 029 02 0009 68 ☎ 254783519@qq.com

CITIZENS ADVICE
Dunedin Citizens Advice Bureau – a free confidential service for all. We can help with tenancy problems, employment issues, consumer problems & host of other issues. Rodgers House, 155 Princes St, ☎ 471 6166 ☎ cab.org.nz

COGNITIVE ENHANCEMENT
Thinkit Feuerstein is a cognitive enhancing program for individuals with learning differences. Enriching thinking and learning skills for ages 5+ to adults. Private sessions held in North East Valley/Dunedin Schools. Book Now: Tutor Kiri Scott – Certified practitioner in Feuerstein method. ☎ 021 118 9882 ☎ www.icelp.info ✉ Thinkit.fie@yahoo.com

COM2TECH
A community-led group that offers a range of free classes to upskill our communities in communications technology and online safety. Wed. 10.30am–12.30pm at Valley Project or Wed. 3.30–5pm at the Valley Baptist Community Centre. ✉ office@com2.tech ☎ com2.tech ☎ @com2tech ☎ 027 256 9182

INSPIRING MATHS CLASSES
Affordable creative maths classes and maths art after school at my home in North East Valley. ☎ Inspiring Maths Classes ✉ Sandra.Dunedin@gmail.com

ITALIAN CLASSES
Experienced teacher, native speaker of Italian. Small groups, all levels, from absolute beginners to advanced and conversation ☎ 027 341 8312, ☎ 473 0832 ✉ antonella.vecchiato@gmail.com ☎ italianclasses.co.nz

Classifieds continued next page... ☎

LEARN ENGLISH

English for daily life and work. Free and low cost courses. Please contact one of our staff at English Language Partners: ☎ 455 5266 or via email ✉ dunedin@englishlanguage.org.nz

MATHS MADE EASY

Experienced maths teacher, recently retired. Primary and secondary certified. Montessori trained. Private tutoring at your home or mine and Zoom as another option. Different strategies to help your child achieve success. ☎ Diane 021 357 565 ✉ dvalavanis@aol.com

NATIVE FRENCH TUTOR

Conversation, preparation for exams, for adults and children. Hourly rate. ☎ Sandrine 021 107 5814 or ✉ sanfeillet@gmail.com. French Up Your Life!

REO MĀORI

Reo Māori teaching or tutoring for adults. Groups or individuals. John Birnie: ✉ johnbirnie@hotmail.com or ☎ 021 236 3765

SPANISH LESSONS

Learn Spanish in a fast and fun way. All levels and wide time availability. ☎ Luana 027 284 7836 or ✉ luana.suarez26@gmail.com

VOCAL TEACHER

I live in the Valley but work from my studio on Vogel Street. I currently have times available on Tuesday and limited times available on Monday. All ages, all skill levels. Starts from \$30 a lesson. Text for more info/to book: ☎ 022 122 3405

housing

ROOM/HOUSE WANTED

Book editor and sometimes musician in 40's looking for a NEV room/studio/house for rent long term from mid December. Ideally quiet and dry. Me: quiet and respectful but also enjoy people and conversation. Refs available. Paul: ✉ hoani76@hotmail.com ☎ 027 544 6126

SELF-CONTAINED UNIT

Looking for a one bedroom flat/self contained unit or studio room. Unfurnished. Up to \$320 p/w. In a quiet, safe building with no smokers. Quiet, reliable tenant. I have autism. Text ☎ 022 034 6290

trading corner

BABYSITTER

10 years of childcare experience. Full drivers licence. Have worked with twins. ☎ Kelly 027 697 9194

BABYSITTER

High school student available for babysitting evenings and weekends. ☎ Laura 027 905 9911 after 4pm.

BABYSITTER IN NEV

Children of all ages. Experienced 26-year-old. Wide hourly availability. ☎ Luana 027 284 7836 or email ✉ luana.suarez62@gmail.com

CAKE BAKER

Home-baked cakes large/small for your pleasure. Made to order. Price list available. ☎ 473 0159 (evenings)

COMPUTERS

I fix computers! Low rates, great service, Windows, Linux, Mac, Android. ☎ Matt 022 048 0012

DAVE'S COMPUTER SERVICE

Troubleshooting & tuition. Low rates. Free optimisation software. ☎ Dave 022 635 9414 or ☎ 03 473 9542

GARDENER

Gardener available, light weeding/trimming, winter rose pruning. Very experienced, \$30 per hour. ☎ 473 0159 (evenings)

GARDENER/LANDSCAPER

☎ Backblokgardens.nz. Section clearing, tree pruning/shaping, planting, custom planters, retaining walls. ☎ 021 023 44 938

HAIRDRESSER

Retired senior hairdresser providing service for seniors. Your home or mine. Dunedin North only, ☎ Helen 467 9644 or ☎ 021 104 1011

JESCARGO CARPET REPAIRS

Domestic and commercial carpet repairs. No job too small. 100% local. ☎ Jesa 022 012 1194 ✉ jescargo_carpet@outlook.com

NEV LASER ENGRAVING

Want something personalised? Get it laser engraved. Wood, ceramic, acrylic & more. Call and see if we can help. 11 Allen St. North East Valley. ☎ Jeff 021 957 369

LOCAL COMPUTER TECHNICIAN

Install, maintain, and troubleshoot hardware and software. Contact Jeff at Control Focus ☎ 021 036 9670

LOCAL HANDYMAN & LANDSCAPER

Fencing, Decks, Retaining and all types of Concrete and Paving. For a free quote contact Liam George on ☎ 027 239 0220 or ✉ email Lg.contracting98@gmail.com

MATURE BABYSITTER

I'm a mother with grown-up children, (full driver's licence) now available for babysitting. Minimum of three hours and also able to help with homework! ☎ Pauline 027 717 0282

OH PEONY PHOTOGRAPHY

At your location or in studio. Portraits, engagement, maternity, child milestone, cake smash, newborn. Products, social media, personal branding, conceptual, etc. ✉ heidi.ohpeonyphoto@gmail.com ☎ ohpeonyphoto.mypixieset.com/

SCRAP METAL COLLECTION

Seeking your scrap metal you have rusting away or cluttering up the shed, etc. Can do small to medium size loads. ☎ JT: 027 206 1725

SEA BLOOM

Local business specialising in custom resin accessories and home decor - the perfect treat for yourself or a gift for a loved one. Find Sea Bloom on Facebook or Instagram, or here: ☎ seabloomnz.company.site

TOP SOIL WANTED

Top soil wanted for the North East Valley Community Garden. Any to give away? Janice ☎ 03 473 7076 or ☎ 027 674 7788

VENUS FLY TRAPS

Large caliber plants. Five times as big as those sold by the shops and are \$4.00 cheaper. Growing instructions included. \$10. ☎ Pat 473 0159 (PM)

WILDWOOD FLOWERS

Now accepting orders for bunches of beautiful, seasonal garden flowers. \$45 delivered weekly. Contact Robyn ☎ 021 178 2855

church services

ANGLICAN: ST MARTIN'S

194 North Rd, 10.30am

GLENAVEN METHODIST

7 Chambers St, 11am

LEITH VALLEY PRESBYTERIAN

George St. Normal School Hall, 10am

OPOHO PRESBYTERIAN

50 Signal Hill Rd, 10am

PACIFIC ISLAND PRESBYTERIAN

160 North Rd. English, 11am on 1st, 2nd, and 3rd Sundays; Cook Island 9.30am; Samoan 11am, 4th and 5th Sundays

SACRED HEART CATHOLIC

89 North Rd, Mass 9.30am

SALVATION ARMY

43 North Rd, community worker only, Mark O'Donnell

INTERESTED IN ADVERTISING WITH CLASSIFIEDS?



To add or update a listing please email voice@northeastvalley.org before the 15th of the month.

Koha is appreciated, but not essential, for classifieds.

If you would like to make a donation, the Valley Project bank account number is 03-1726-0005606-000 Reference: VVDonation

Invest with confidence



Lyn Howe,
Investment
Adviser

lyn.howe@forsythbarr.co.nz
(03) 477 7464 | forsythbarr.co.nz

FORSYTH BARR

TIPPLER'S Bar & Cafe

Your friendly neighborhood bar

- ★ Happy hour everyday 4-6pm
- ★ Self-service TAB
- ★ Pokies
- ★ ATM

11B North Road
473 1795

DARLING REALTY

- RESIDENTIAL
- COMMERCIAL
- BUSINESS
- INVESTMENT
- PROPERTY MANAGEMENT

Call the team today 473-1721
DARLINGREALTY.CO.NZ

Dunedin Electric Bikes

Valley Community Workspace
11 Allen Street, North East Valley

Sat, Sun, & Tue: 9am - 2pm
Mon & Fri: 9am - 4pm

Phone Nathan:
027 214 8294



MASSAGE

for WOMEN with Uschi Heyd

- ◇ Myofascial Release
- ◇ Orthobionomy
- ◇ Swedish Massage



kindliving.co.nz 027 360 0238



Send in photos of yourself or whānau completing any of these virtuous checklist items and we'll feature them on our Facebook page!

Send to: voice@northeastvalley.org

- ☐ Donate kai to a community pantry at least once a month.
- ☐ Participate in an OpenVue working bee planting/propagating/weeding.
- ☐ Take a stroll along the Lindsay Creek.

- ☐ Plant five native trees/shrubs.
- ☐ Measure your carbon footprint (www.toitu.co.nz/calculators). Take two measures to reduce it this year.
- ☐ Visit the seed shelf at Valley Project and plant some seeds of yours own.
- ☐ Grow microgreens at home.
- ☐ Grow native seedlings and donate to OpenVue's propagation nursery.
- ☐ Remove an invasive weed from your property.
- ☐ Get involved in a community harvest or share your own harvested fruit or veges with your neighbours.
- ☐ Partake in Neighbours Aotearoa in March. Create a fun and friendly activity for those around you.
- ☐ Hire discs from the Valley Project and host a round of Disc golf at Chingford Park.
- ☐ Sign up for a rodent/possum trap installation on your property or join a trapping group.

- ☐ Do a round of litter removal in any NEV public spaces.
- ☐ Visit Dalmore or NEV community gardens for inspiration, then join at least one of their working bees.
- ☐ Attend a bike workshop at the Valley Community Workspace.
- ☐ Bike to work at least once a month.
- ☐ Volunteer with the Valley Project.
- ☐ Donate wood to the North Dunedin Shed so they can make awesome stuff for the community.
- ☐ Complete at least one full lap at the 2023 Crush the Cargill Challenge.
- ☐ Tell us your personal resolutions that fit with climate change, planting, biodiversity, or community resilience. (vpmanager@northeastvalley.org).
- ☐ Submit a NEV-relevant article to the Valley Voice community newsletter.
- ☐ Donate to the Valley Project so we can keep on keeping on! (www.givealittle.co.nz/northeastvalley)

THE LETTERBOX LOW-DOWN

This monthly publication is the Valley Project's main method for community connectivity, and your letterboxes determine its deliverability, so let's revisit some of the rules and regulations around these essential receptacles!

Help posties and our Valley Voice distributors access your letterbox safely, securely, and efficiently by meeting the following specifications as outlined by NZ Post:

- The mail slot should be big enough to take a few A4-size magazines without needing to fold them.
- The depth of your letterbox should accommodate an A4-size item so it can be dropped in flat and out of sight completely.
- You can still have fun with your mailbox design, just aim for the minimum internal dimensions of 160 x 270 x 330mm.
- Make sure your street number is clearly visible.
- Position your letterbox on the street line, accessible from the footpath. Avoid locations uphill, up stairs, or on a slope.
- Maintain safe and clear access to your mailbox, with no shrubbery or obstacles in the way.
- The height of your mailbox must be between 900mm – 1200mm from the ground to the mail slot.

Here's what the *Code of Practice for the Distribution of Unaddressed Mail* says about the signage you display on your letterbox. Note the Valley Voice is an 'unaddressed circular'.

- Signs requesting non-delivery must be honoured (e.g., *No Unaddressed Mail, Addressed Mail Only, No Junk Mail, No Circulars, Addressed Mail and Newspapers Only*).
- Exceptions to 'Addressed Mail Only' signs: local public notices from government or local bodies and election material are permitted.
- Exceptions to 'Addressed Mail and Newspapers Only' signs: free print media, public notices, and election material are permitted.
- Exceptions to 'No Junk Mail' and 'No Circulars' signs: local community newspapers/magazines, charitable media, public notices, and election material are permitted.



Stylish mailboxes photographed around the region: North East Valley, Dalmore, Pinehill, Normanby, Signal Hill, and Opoho. More on back page.



GET TO KNOW SOME OF YOUR TRUSTY VALLEY VOICE 'NEWSIES'

EMILY, JACOB, AND ELLA:

For us, the delivery of the Valley Voice newsletters is a team effort that is difficult at times but mostly rewarding. We roughly do about 7.5k on foot, driving between our two main delivery areas. I do the steep streets, Jacob and Ella pair up on one or two, and we all tackle the 'flat' as a family.

We've endured snow flurries, hail, rain, wind, and abundant sunshine. The worst is always the rain-wind combo. Jacob prefers when it's cold as the walking warms him up. Ella prefers when it's sunny and warm, but with a breeze to keep her cool as she's trotting along. I'm happy as long as it's not raining.

Overly territorial dogs leaping along fence lines can be disturbing for us. Some mailboxes are hard to find or unsafe to get to, involving climbing a steep and slippery bank or going up a long drive, and there are a couple overgrown with holly bush which, as we all know, is rather unkind to the touch.

Of course, there's lots to like about our run of 395 copies. Jacob enjoys delivering to the creatively crafted mailboxes, while Ella always fancies a run-in with friendly animals and birds. Her favourite encounter was with a hedgehog. I enjoy the exercise, friendly faces, bird life, and the view from the steeper streets!



KAITRIN: Way back in 2013, when our family had first landed on Planet NEV, somehow it was mentioned that a volunteer was needed to deliver Valley Voices to various businesses, as they often don't have a letterbox and needed someone who could pop into the shop, etc., with aforementioned newsletter (Editor, is there a prize for the longest sentence?). Anywho, I took on the job thinking it was a oncer, BUT here I am, still travelling Business Class!

I have seen a few changes—cafés opening/closing/transforming—but what never changes is the friendliness of the street, and what should be a 40-minute, 1.5km round, seems to last longer due to the chat trap! I also take some large print versions to the rest home and hospice.

I'm on the boxless round, BUT would LOVE to see North East Valley become a letterbox art destination. Wouldn't that rock the Casbah?



KERI & CO.: Delivering the VV is something we do as a family. We get a chance to chat about all sorts of things as we walk the undulating streets of Pinehill. Often, we'll strike up a conversation with others out for a stroll, or with residents pottering about outside their houses. Occasionally, we'll encounter a mooching moggy and stop to offer a pat, then it's back to delivering the Voices.

When the sun shines, we get a tan; when the rain pelts, we appreciate the dry days! Be sure to say "hi" the next time you see us delivering your monthly news!

LOOKING FOR UNIQUELY NEW ZEALAND GIFTS? Visit the Information Centre at the Botanic Garden

OPEN
10AM-4PM
EVERY DAY

BOOKS
PLACEMATS
COASTERS

CARDS
APRONS
CANDLES

JEWELLERY
GROWBAGS
HONEY

HOUSEPLANTS
SEEDLINGS
TRAVEL MUGS

TEA TOWELS
WOODWORK
SOAPS

MAGNETS
STATIONERY
TOYS








Local People Selling Local Property

Jane Bokser | **Colleen Townsend**
027 473 6221 | 027 226 5482

Ray White Dunedin Proven Realty Ltd Licensed (REAA 2008)

Valley Arborist Complete Tree Care

For free quotes by a professional and qualified arborist

Pruning Felling Advice & Assessments Planting

Sam 0223023607
valleyarb@gmail.com

