

# School up the hill on the up



Pine Hill School pupils and teachers celebrate the growth of their school.

THERE IS an absolute buzz in the air as I enter the administration block of Pine Hill school. I'm here to meet with Melissa Ward, principal of the school for the past three years. And what a three years it has been! Beginning as just one classroom of 20 children it has been recently announced that the third classroom will be opening at the school next year as the roll has increased to 46 pupils

Melissa tells me that the school has gone from strength to strength over the last three years with a great sense of community, a supportive Board Of Trustees, fantastic teaching staff, and and last but not least, the beautiful tamariki and whānau who make up the school community. Now looking forward to the beginning of term for of 2020, Melissa can see all the hard work over the last few years paying

off. She is thrilled to report that ERO are very satisfied with the school's performance, and of course, she's delighted that the Ministry of Education has assessed the school as requiring additional staffing for a third classroom.

This will be the first time since 2011 that the school has had a third classroom, and for the children it represents a new middle school classroom and a greater journey through the school as they grow up. The current roll is at 46 children, 11 of whom are from the families of former refugees who have settled in the community over the past few years.

Continued on page 5...



Murray and Corey Ford proudly servicing the Valley for over 25 years

Our services include:  
Plumbing - new and existing  
Gas fitting  
Drainage

**Laser Plumbing Dunedin**  
369 King Edward Street South Dunedin  
Phone (03) 456 3178  
dunedin.central@laserplumbing.co.nz

## Valley Arborists

Complete Tree Care

Make contact for free quotes for tree care by a professional and qualified arborist.

0223023607 (Sam)  
valleyarb@gmail.com



New Builds  
Extensions  
Renovations

25 years in the industry in NZ & Australia  
Registered Building Practitioner

Contact Dave 027 703 5896  
for a free quote

### Local People, Selling Local Property



Jane Bokser  
027 473 6221



Colleen Townsend  
027 226 5482

Ray White Dunedin Proven Realty Ltd Licensed (REAA 2008)



Kath Scott D.O M.O.N.Z  
Registered Osteopath

021 089 23960  
kath@scott-osteopathy.co.nz  
www.scott-osteopathy.co.nz

# We are all in the waka together!

KIA ORA friends in the north end of Dunedin.

No Ōtepoti ahau.

Ko Pine Hill te kāinga.

Ko Natalie Yule Yeoman te ingoa.

Ngā mihi mahana ki a koutou katoa.

Hello everyone, my name is Natalie and this year I was honoured to be the 2020 ambassador for Relay for Life, the Cancer Society's iconic event for thousands, celebrating survivors of cancer and raising support and funds for cancer research in Aotearoa.

I am also a teacher and a musician and during level 4 lockdown back in March, I wrote a song for children.

Who would have thought we'd be living in bubbles?

Needing lots of cuddles and not too many troubles...

We are sneezing in our sleeves and soaping up our hands,

It's crazy how this lockdown just changed everybody's plans!

And that about sums up our year so far! So many have had major dreams, hopes and plans shattered, some repeatedly, and turned to custard. Relay for Life got put off. Then put off again.

Anyone who has experienced cancer knows that cancer also changes everybody's plans, for the person at the centre but also the whānau and friends. We have to gradually shape ourselves into a new reality, to modify plans, to work on our coping mechanisms and to keep building our lives. We may even become pretty good at that.

I had to do it five and a half years ago.

At the beginning of 2015 I was diagnosed with breast cancer. By mid-June it was discovered my breast cancer was metastatic, into my bone, and incurable. The added challenge was that it had been present for some years so I also had to deal with the pain of finding I had a very delayed diagnosis.

I have lived a challenging, but fulfilling life in the years since then, with teaching, writing music, enjoying the support and joy of whānau, friends, colleagues, health professionals and neighbours. There have been ups and downs and on-going treatments, but most of the time I feel fine. Life is still very good!

I have written my story as a book, called 'A Maze of Grace'. And it's a good story, yes, with pain, but also with laughter and learning, sobering and funny experiences, growth and growing pains. And always with 'my band of angels', that team around us that none of us can thrive without. We are all 'essential workers' in the business of helping each other to live well. We are, as Jacinda has been reminding us all year, a team of five million. And within that, there are countless small bubbles and teams, that we all inhabit.



Natalie Yeoman performing

Covid. Cancer.

We didn't choose either of these, but what will we do with them? How will we respond? Because that is the crucial thing and that, we can choose! Let's choose life, community, kindness and gratitude.

He waka eke noa. We are all in the waka together!

My book is available in the Gardens shops, at the lovely Bloomin' Gorgeous florist, 19 North Road.—Natalie Yeoman

The Valley Project is a registered charitable organisation. If you like what we do, you can donate at [www.givealittle.co.nz/northeastvalley](http://www.givealittle.co.nz/northeastvalley)

**Editor** Tess Trotter

**Distribution** 3700 copies

**Readers** 7500

**Online** [www.northeastvalley.org](http://www.northeastvalley.org)

**Advertising** please contact us!

**P** (03) 473 8614

**E** [voice@northeastvalley.org](mailto:voice@northeastvalley.org)

**f** [facebook.com/valleyproject](https://facebook.com/valleyproject)

**t** **i** @valleyproject

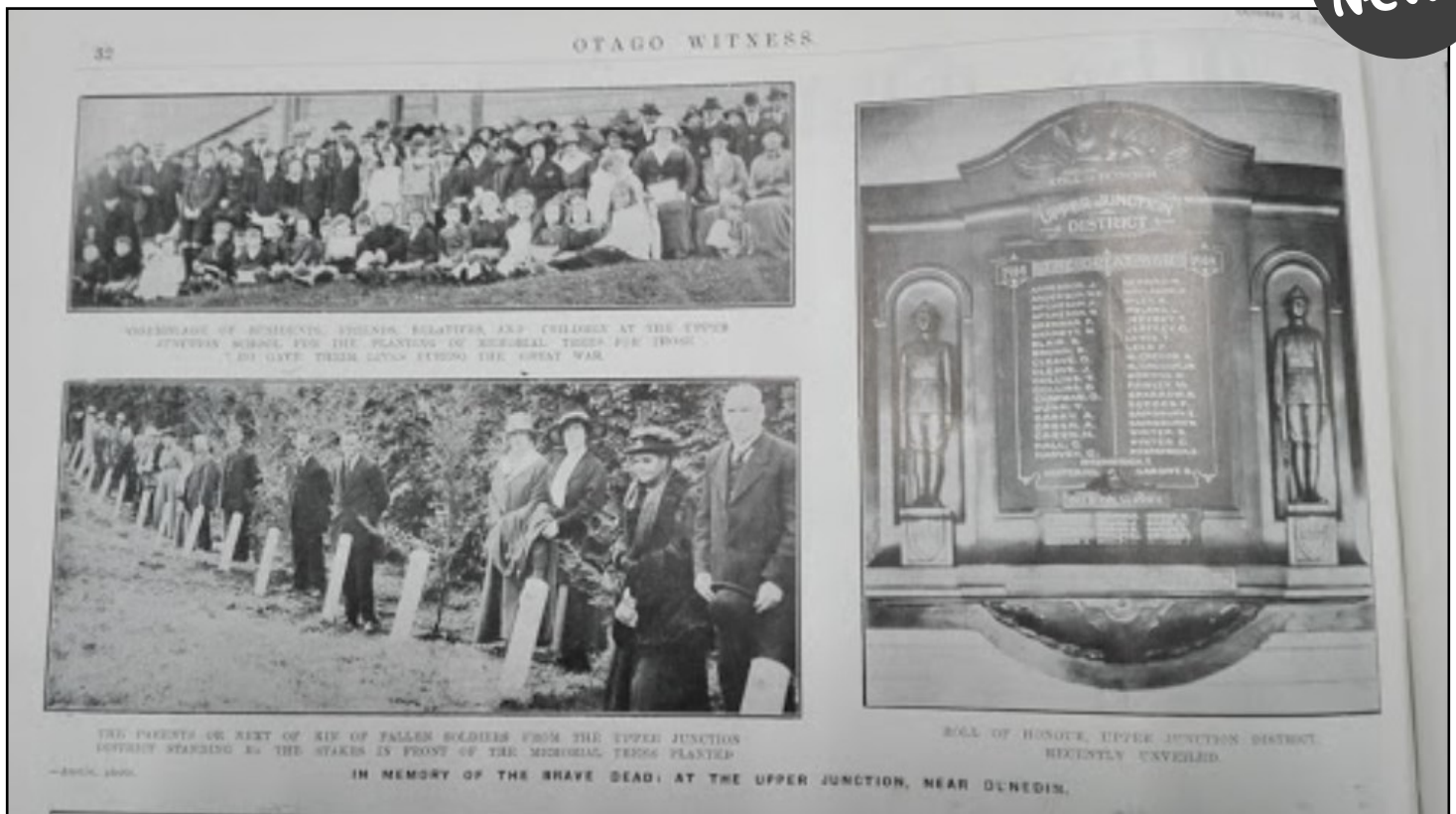
262 North Rd  
North East Valley  
Dunedin

PO Box. 8118 - Dunedin 9041



The opinions expressed in articles are the authors own, and are not necessarily shared by the editor or Valley Project Team. Submitted articles may be edited at the editor's discretion.

# Fallen soldiers families sought



The Otago Witness, 14 October, 1919

THE SEARCH is on for family members of 17 fallen soldiers from Upper Junction who lost their lives during WW1, named on a memorial board that was once in place at the Upper Junction School. The original memorial board is believed to have perished in a fire at the school in 1945. Despite this happening several generations ago, the board, and the memory of these soldiers, and the actions taken to honour the loss of their lives is ongoing.

A huge amount of hard work and collaboration has led to the preservation of the site where the school, and original lost memorial board, sat. At the top of North Road, looking down and across the Valley, lies a wee wedge of land that was gifted by the education board at the time to the RSA. Members of the Dunedin NZRA & Otago Military Historical Group, local Rotary and neighbours have rejuvenated the site where crosses and plinths honour former students of the school who lost their lives at war. Clearing, planting and repairs have all taken place, with the space hoped to be used by the community as a quiet place of reflection and relaxation. Neighbours to the site, the Heiller family, along with John and Mary-Jane Campbell, have been instrumental in the work on the site, with seats also donated by the DCC.

Meanwhile, a second memorial board, created in the 1980's, has recently moved from the Normanby Tavern to North East Valley School, where it will be officially unveiled on Armistice day on 11th November at 2pm by local Keith Heiller and his grandson.

Christine George, of the Dunedin NZRA & Otago Military Historical Group, says the group would love to track down family members of the soldiers to attend the unveiling of the memorial board. Listed alongside are the names featured on the board. Are any of these names familiar to you? If so, please contact Christine by email to [clgonholiday@gmail.com](mailto:clgonholiday@gmail.com).—Tess Trotter

## Names of soldiers

Private Adolphus /Dolph Brennan  
 L/Corporal Richard /Dick Brennan  
 Trooper Joseph Daniel Collins  
 Private Andrew A Donald  
 Private Bruce Harvey  
 Trooper A or Carl LaMont  
 Sergeant Alexander Paisley  
 L/Corporal Andrew Paisley  
 Private Harold Paisley  
 Private Edward Sainsbury  
 Rifleman George D Shaw  
 Private John Williams  
 Private William Winter

If you are related to any of the men named above, please contact Christine George on [clgonholiday@gmail.com](mailto:clgonholiday@gmail.com)

# Holiday fun at Chingford Park

WITH THE days becoming longer and warmer, I feel the pull of exploring the outdoors becoming much stronger. With the school holidays and warm spring weather, I find myself with some spare time to spend outside. Chingford Park up North Road offers plenty of opportunity to satisfy my craving for the outdoors. Lindsay Creek, running through the heart of Chingford Park and the Valley itself is particularly alluring as the sight and sound of the water flowing across the river-bed has a calming effect. The creek is also home to many wonderful aquatic species such as tuna (eels), Kōura (freshwater crayfish) and freshwater invertebrates. Across the grassy fields and in the bush, the calls and songs of pīwakawaka (fantails), tūi and korimako (bellbirds) among many others fill the air.

The short loop track carries me up into the bush, where the sound of the wind catching and rustling leaves draws my attention. There are many different species of trees within Chingford Park, with leaves shaped differently from one another. Many native trees hold onto their leaves all year round (known as “evergreen”) although there are a few, like the kōtukutuku (tree fuschia) and many introduced trees that let go of their leaves (known as “deciduous”) often over winter. Can you find the

## Pop-up Trap Library

AT THE Valley Project community rooms, 2 pm - 4 pm. Join the Backyard Ecosanctuary by tracking or trapping mammal predators in your backyard.

We will have monitoring devices (tracking tunnels, chew cards and trail cameras) to help you find out what might be lurking in your backyard as well as traps for rats (\$10) and possums (free for hire) and some friendly advice! If you would like more information or are interested in volunteering, please email [openvue@northeastvalley.org](mailto:openvue@northeastvalley.org), or call the Valley Project on 03 473 8614.—Clare Cross

## Kids' Corner

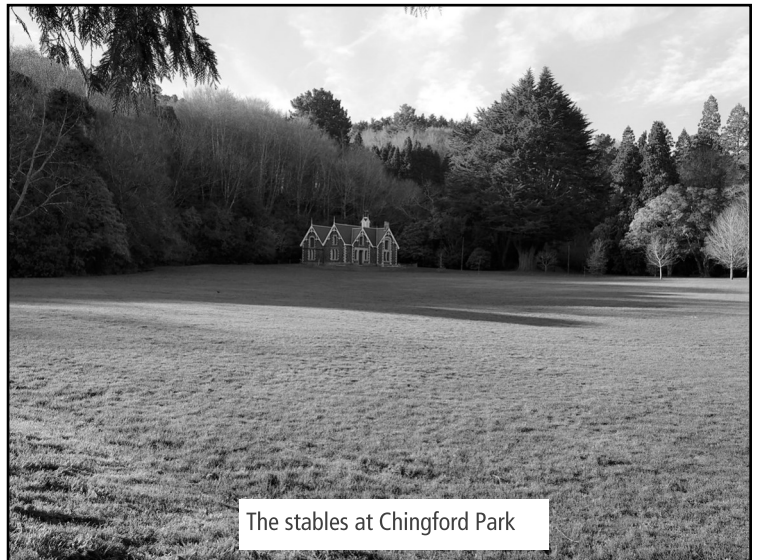
**Make your own** seed bomb and origami Kererū!

Kererū are sometimes known as the heroes of the forest, eating the large berries of our native trees. They then fly away to find a nice spot in the forest to poo the seeds. The seeds then grow into more native trees!

To be just like the kererū and make your own seed bomb, you will need: clay, compost and a seed of your favourite plant or tree. Roll the clay and compost into a ball. Make a dent in the hole and place your seed in the centre. Roll clay back into a ball, surrounding the seed in clay. Launch your seed bomb under a tree so the seed can grow!

To make your very own origami kererū, you will need: a square piece of paper and some coloured pens or pencils. For all the steps check out: [kcc.org.nz/portfolio/origami-kereru](http://kcc.org.nz/portfolio/origami-kereru)

We would love to see your seed bombs and origami Kererū - share your photos in our Facebook group [Facebook.com/groups/openvue](https://www.facebook.com/groups/openvue)



beautiful tree fuschia that's growing next to the bridge? It has orange papery bark.

I haven't yet had the adventurous spirit to tackle the orienteering course that can take you a little more “off the beaten track”, but if I remember to bring my disc with me, the disc golf course takes me exploring through different parts of the lower park. Past the stables, large historic trees and the site of the old house are remnants of the estate that was once owned by P.C. Niell. You may even go past the “Riparian Rhapsody”, a site next to the creek that is being weeded and planted by local community members. Around the playground and the concrete pad that was once a swimming pool, is the community orchard, a delightful treat when the trees are fruiting.

If you'd like to explore Chingford Park this school holidays, but are not too sure where to start, check out the “Native Plant ID Walk” on our blog (with illustrations from Jo Bone). [northeastvalley.org/blog](http://northeastvalley.org/blog)

—Clare Cross, OpenVUE Coordinatoir



Continued from front page...

Melissa is proud to be the principal here. She is proud of the community that surrounds the school and feels as if they're a bit of a hidden gem on the hill. The Board of Trustees is thrilled with the latest news. The school is a hub for the community, with fantastic large grounds and plenty of parent involvement. On the day I visited, the entire school is off to visit Larnach Castle, having done some inquiry learning about Dunedin over the past term. As a small school, we were able to squash all the teachers and students into one classroom to take a picture. There was an absolute buzz in the air as all of the children prepared themselves to hop on a bus and go on the adventure. Ka pai, Pine Hill! —Tess Trotter

Attention:

Our September issue featured a story on the Election Candidates evening in Opoho. The story included a photograph of the candidates evening from 2017.


Please note, the current candidates are not those pictured in this article.

community NEWS

# shop • eat • drink • services

SUPPORT YOUR LOCAL COMMUNITY & BUSINESSES

Your "local" Garden Centre  
Helping youth employment  
Open 7 days: 10am-4pm



**youth grow**  
GARDEN CENTRE

146 Norwood St, NEV  
(03) 473 1334  
A Presbyterian Support Otago service



**DARLINGREALTY**  
Lincoln Darling Real Estate Licensed Agent (REAA) 2008  
SALES & PROPERTY MANAGEMENT

Need your property  
**SOLD or RENTED?**

Call us for a free no-obligation appraisal

Call our team today  
**473-1721**  
21 North Road, Gardens  
**DARLINGREALTY.CO.NZ**



New, recycled & conversions  
All bike repairs & battery services

Valley Community Workspace  
11 Allen St, NEV

Monday-Friday: 9-5  
Weekends: 9-2

Ph Nathan: 027 214 8294



**CARLI RICHTER**  
PHYSIOTHERAPY & PILATES

**Community based pilates classes beginning term three in the Valley!**

Contact  
carli@bankspeninsulaaphysio.co.nz



**FILADELFIO'S**  
GOURMET PIZZA RESTAURANT & BAR

Filadelfio's Restaurant & Bar @ the Gardens

The best gourmet pizza experience in Dunedin. Accompanied with fine wines and ales.  
Ph. 473 6232



market fresh flowers  
giftware

19 North Rd 473 9292

bouquets ready to go  
OR  
made to your choice

Meals delivered to your door



Nutritious locally made ready to eat meals

Order from  
**YourProChef.nz**  
473-1680




**Blacks Road GROCER**

Take a nostalgic step back in time to a neighbourhood store reminiscent of the past.

**your local cafe & grocer**

178 North Rd  
Mon-Fri 7.30-5 | Sat-Sun 10-4



Yummy cakes! Great coffees!

Open 7 Days 10.00 am - 4 pm

**Ross Home 360 North Road**  
(inside the main entrance and foyer)  
Competitively priced,  
come and join us!



Your friendly neighbourhood bar

- Supper happy hour: 4-7pm Friday
- Bar draw: Friday
- Meat raffles: Friday & Saturday
- Self-service TAB
- Pokies
- Gold card special: 10.30am-6pm Tuesday

**Happy hour every day 4-6pm**

11B North Rd  
473 1795



**DARLINGREALTY**  
Licensed Agent (REAA) 2008

Take the opportunity to realise the value in your property now

No Obligation. No Pressure. No Nonsense.

**Tony Watts**  
Sales Consultant  
M | 021 084 12331  
P | 03 473 1721  
tony@darlingrealty.co.nz  
21 North Road, Dunedin 9010, NZ  
PO Box 311, Dunedin 9054  
**DARLINGREALTY.CO.NZ**



# Enterprising Opoho students raise funds for wildlife



Lucy Ireland and Hannah Schönleben

**PHILANTHROPISTS**, Hannah Schönleben and Lucy Ireland (Opoho School Year 5 students) on a play-date one day, decided to teach each other how to sew. They started off with sewing a face mask and suddenly thought that they could make and sell them, and at the same time, raise money for the Dunedin Wildlife Hospital. Both girls are passionate about wildlife and love penguins. Lucy's mum is a volunteer worker at the Dunedin Wildlife Hospital.

They have been sewing flat out each weekend, during many playdates and after school. There have been many late nights sewing to fulfil the ever-growing orders which have reached more than 50.

The masks have been priced cheaply at \$5 each and are beautifully made with fun and funky fabrics. Buyers are encouraged to pay more if they wish, to help support this great cause.— Taina Henderson.

## Pupils call on DCC for Polystyrene solutions

**KARAWHUIA NGĀ** tamariki! Students from the North East Valley Normal School Te Rōpu Manaaki class presented a planter to the DCC made from 6 months' worth of polystyrene packaging from Captain Bikeheart (Steve Ward) at the Valley Community Workspace. With the plants donated by Open VUE, and the paint donated by Kaitrin McMullan, this was a real mingling of resources!

But the main resource was the artwork by the school students who made planters for all their households, as well as writing a group poem to bemoan the environmental effects of polystyrene on our beautiful earth mother, Papatuanuku. Raylene Buttler-Gage, who alongside her classmate Te Atua Stettner represented the class said "I felt really nervous talking but I hope they listen and make a place to recycle. Polystyrene is like a virus because it spreads and you can get poisoned and animals can too.

In class, they learnt about the long-lasting nature of this packaging, how wildlife and the oceans are polluted, and it's carcinogenic fumes when heated...nasty stuff! They attended the DCC Planning and Environment committee meeting, to present their concerns and to ask for alternatives to be supported, as well as a Recycling Resource Centre to be set up. In the

words of the wise, Manaaki whenua, manaaki tangata, haere whakamua - care for the earth, care for the people, go forward. Raylene and Te Atua say "We want to say thanks to our teacher Whaea Mel, Kaitrin and our school for letting us have this opportunity that not every kid can have. He tino tau ke koe".—Kaitrin McMullan



Kaitrin McMullan, Raylene Buttler-Gage, Te Atua Stettner outside the Council Chambers.

## New Massage therapist

I HAD the pleasure of visiting local Karen Mayhew at her new massage studio on Ainslee Place. Karen's space is fresh, warm and inviting, as is she. An experience massage therapist, she instantly put me at ease with her knowledgeable assessment of my aches and pains. A true listener, Karen was able to identify problem areas and give me sound advice as well as a lovely back rub.

It was a delight to chat about the neighbourhood and how the children are going at school, plus of course the huge bonus of not having to leave the Valley or search for a park in town! Karen's business is East Coast massage, and she advertises on the

back page of the Valley Voice.  
—Tess Trotter

## Speed limits changing

**WORK IS** continuing on changing speed limits around Sacred Heart School.

They're being lowered from 50km to 40km during school pick-up and drop-off times. From 8am to 9.30am and 2pm to 4pm on weekdays you'll need to slow down when you approach and leave the school.

Electronic signs will remind you about the new speed limit.

Other road safety improvements the Dunedin City Council is installing around our school include tempo-

rary kerb build-outs and gateways.

Kerb build-outs will indicate gateways to our school zone, encouraging motorists to reduce speeds and be prepared for high numbers of pedestrians around school start and finish times. They narrow the road width to ensure the school zone signs are as visible to drivers as possible.

The temporary buildouts and gateways will be replaced with permanent work later.

This work is part of DCC's schools' speed management programme project to improve road safety outside Dunedin schools. Schools prioritised to receive these improvements this term be-

cause of the risk to pedestrians and cyclists from speeding vehicles include Bayfield High, Fairfield, Dunedin North Intermediate, Sacred Heart, George Street Normal, East Taieri, Waitati, Wakari and Kaikorai Valley College.

See [dunedin.govt.nz/schoolsafety](http://dunedin.govt.nz/schoolsafety)

## Seeking sleepout

**SLEEPOUT/SMALL** cottage wanted, with urgency!

Wanted to rent in Pine Hill or North Dunedin.

Please contact Des on

027 7828 900

# trade directory

SUPPORT YOUR LOCAL COMMUNITY & BUSINESSES

## DALE WILKINSON BUILDER

Local, loyal and licensed builder practitioner at your service.

No job too big or small, quotes available.

Please call  
021 867 896



## Peter Waymouth Consulting Arborist

[www.greentrees.co.nz](http://www.greentrees.co.nz)

Fine pruning of trees  
large & small

473 8065  
027 432 9646

New Builds, Renovations,  
Alterations Maintenance &  
Farm Buildings



## EDWARDWHITE BUILDERS

for more information contact:

p: 021 0718 665

or 03 482 2729

e: [edwardwhitebuilders@gmail.com](mailto:edwardwhitebuilders@gmail.com)

**Plumb it!**  
DOMESTIC & INDUSTRIAL  
PLUMBING SERVICES

**TIM BUSCALL**

027 473 1650

ph/fax (03) 473 1650

Craftsman Plumber / Reg. Drainlayer

please

give  
our  
advertisers  
your  
support

and don't forget to tell them you saw it in the Valley Voice, as their support helps to keep our free community newsletter going ...

If you would like to advertise email [voice@northeastvalley.org](mailto:voice@northeastvalley.org)



## AROUND-TUIT handyman services

Get jobs done which have been hanging around because you haven't got time.

**DIY jobs  
garden clearance/tyding**

VERY REASONABLE RATES

References available

**Why wait any longer?**

022 472 4988

[aroundtuit17@gmail.com](mailto:aroundtuit17@gmail.com)

## McARTHUR & SYMONS ELECTRICAL



APPROVED  
CONTRACTOR FOR THE  
DCC AND  
OTAGO UNIVERSITY

DOMESTIC

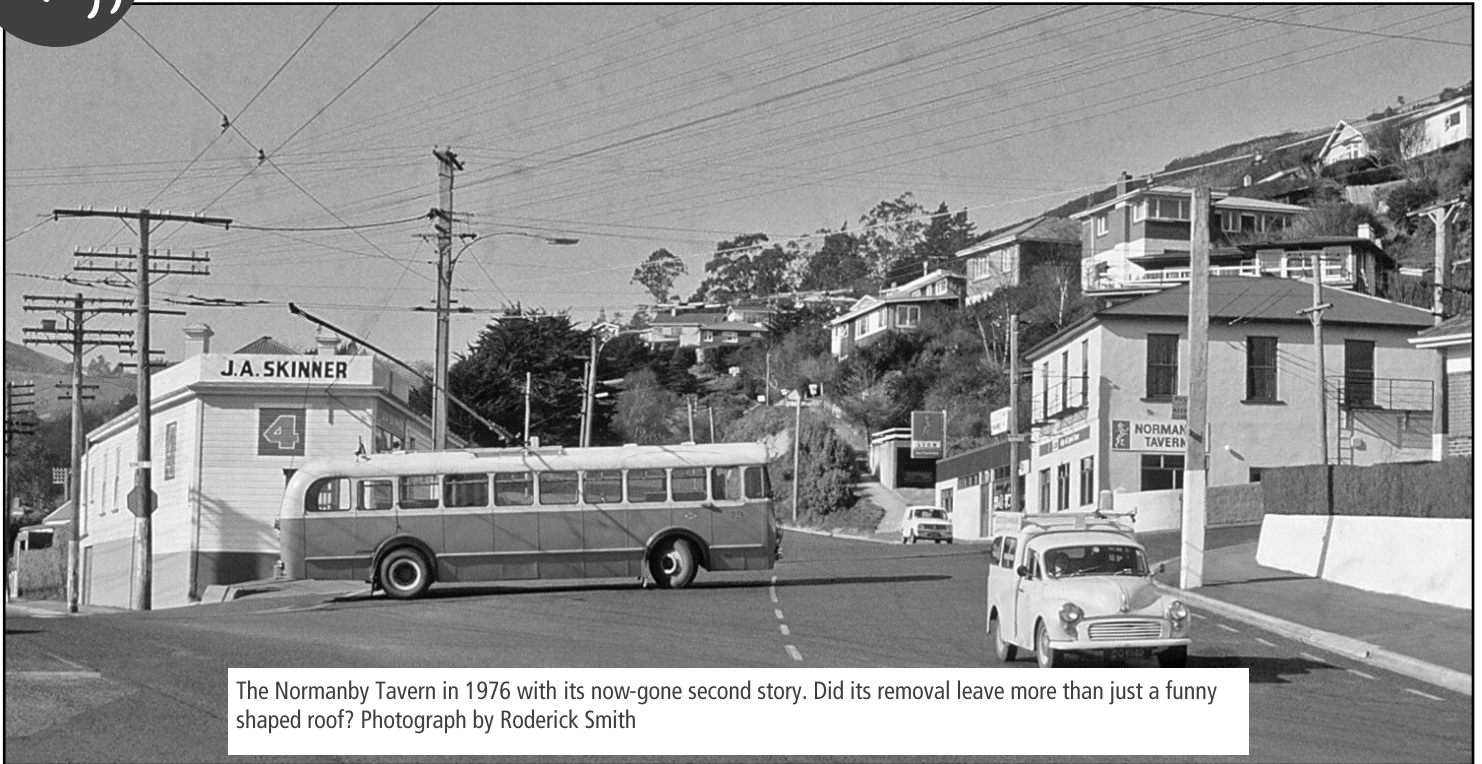
COMMERCIAL

INDUSTRIAL

WORKMANSHIP GUARANTEED

Phone 03 473 8519 • [sales@mcarthursymons.co.nz](mailto:sales@mcarthursymons.co.nz)  
39 North Road, North Dunedin • [www.mcarthursymons.co.nz](http://www.mcarthursymons.co.nz)

# Ghostly tales in the Valley



The Normanby Tavern in 1976 with its now-gone second story. Did its removal leave more than just a funny shaped roof? Photograph by Roderick Smith

**MY FRIEND** James requested a column about North East Valley ghost stories. Some may think this a bit non-scientific for a science/environment column, and you'd be right. Science is a really useful method for measuring and determining what might happen in the physical world, for example predicting how a virus might spread through a population. But science is not as useful when it comes to things that are hard to objectively assess, such as the nature of consciousness, or what happens when we die. What is real and well-studied though is humans' fascination with tales of spirits since time immemorial. Ghost stories also open doors into our history...

My initial investigations threw up a few leads. Dunedin ghost tour guide Andrew Smith's book Dunedin is a Ghost Town mentions footsteps coming from where the Normanby Tavern's second story used to be, above the bistro. A Sunday afternoon field trip was required. Richard the proprietor did tell me they had heard odd noises but these had stopped after they trapped a rat. Hmmm. He did, however, show me some very frightening photos of past Halloween fancy dress nights. One of the long-time patrons also could not report any strange goings ons but did tell me that his house up the road was haunted by a murdered prostitute. Verdict: unlikely.

In another story a past pharmacist down at the Gardens shops had a disturbing habit of pinching female employee's bums, even after he died. Andrew Smith claims to have met the husband of one of the pinchees who can corroborate the story. Brendan, the current pharmacist at Gardens Antidote, said he'd never felt anything odd, but then the chemist has moved a few times in recent years and perhaps the ghost did not go with. Verdict: possible.

But the most moving ghost story in the Valley comes from the far northern reaches - Upper Junction. Once, when North Road was the main road out of town, Upper Junction was a thriving

little community with a school and a hotel, somewhere to rest the bullocks and horses after their walk up the hill. It has been said that three ghostly men have been seen standing at the sharp bend in the road, at the junction with Clava Street. Could they be three of the 17 Upper Junction men - including three Paisley brothers and four Brennan brothers - that were killed during World War I?

None of the present or former residents of Upper Junction I spoke to had ever seen anything particularly odd, nor had they loitered around that corner with a couple of mates looking spooky. On that corner though, behind the macrocarpas, is a memorial to the 17 lost former pupils of Upper Junction school in what used to be the school playground. Seventeen little white plaques stand next to 17 little new kowhai trees, which have replaced the original 17 native beech trees planted after the war. The RSA is currently working to tidy up the memorial and provide safer access from North Road. Verdict: unlikely, but a melancholy place none the less.

In an interesting twist Upper Junction School's memorial boards, listing those ex-pupils who fought in WWI and WWII, have hung in the Normanby Tavern's bistro for many years. Now that the tavern is being sold the boards are moving to the North East Valley School hall, where they will be unveiled on Armistice Day, 11 November.

Perhaps it is the very fact that we don't have all the answers that makes ghost stories so intriguing. Imagine how unmysterious the world would be if we did. If you want to delve further into Dunedin's spooky past, check out Andrew Smith's Hair Raiser ghost tours at [hairraisertours.com/](http://hairraisertours.com/).—Helen Jack



# Toy Library committee wowed

WHAT LUCKY ducks we were to have Otago Polytechnic Occupational Therapy students on placement at the toy library last month. They came, they saw, they stocktaked. Third year students, Rachel Fahey and Aui Ferrer lead the project with help from fellow students and our Saturday librarian Meg Stephenson.

The project included a member survey and a full stocktake of our 330 toys! The aim was to get a better understanding of the toys available for members to hire, and whether these toys were meeting the needs of our tamariki.

The toy library committee have been wowed by this project. The students left our library organised and new signage in English and Te reo is up. We found out that the toy library has a good range of toys promoting different types of play for children between one to five years but there are gaps for our youngest and oldest members. We can't wait to get shopping!

We'd like to thank everyone involved. Our membership has doubled in the last year, and with support from organisations



Otago Polytechnic Occupational therapy students Sasha, Aui, Rachel and Beth

like Otago Polytechnic, we can provide an even better service for our community – Jennifer Lawn, Chairperson

## valley garden journal



### Meet community gardener Jenny Roxborough

#### When did you first get involved with the Community Garden? ?

It was about 11 years ago when the Garden was just being started. The Project with the help of a Community Social Worker from Presbyterian Support had arranged some grants and the NEV Normal School had a disused playing field available. We had to get a formal Licence to Occupy the site and draw up a memorandum of understanding with the school. It took more than a year to get through all this formal stuff and the first working bee was held in February 2011.

#### How has what you do at the Garden changed over the years?

I started out taking minutes at meetings and with various changes over the years I've gradually become responsible for things that involve communication of one sort or another. Things I've done include painting signs, organising to have a banner made, printing flyers, applying for grants, sending out a monthly email with working bee information, liaising with the Project and the school, liaising with visiting groups, answering emails and generally passing on messages to the group.

#### What do you enjoy most about the Garden?

You'll see I haven't mentioned actual gardening above which has been a lifelong interest but my rheumatoid arthritis has made this more difficult as the years have progressed. I enjoy being able to make a real contribution doing the things I'm capable of. I enjoy meeting a wide range of people of all ages who I wouldn't have got to know without the Garden. A bonus is taking home vegetables of course and I've learnt a lot about the differences between gardening north of Auckland and in Dunedin.

North East Valley Community Garden

Saturday 3 & 17 & 31 October: 9:30-Midday

Sunday 11 & 25 October: 1-4pm

Dalmore Reserve Community Garden

Check [www.facebook.com/DalmoreCommunityGardenPineHill](http://www.facebook.com/DalmoreCommunityGardenPineHill) for upcoming events and working bees

## fitness & health

### CONTRA DANCE

7.30pm, Mon, \$2, 52 Dundas St. Ph. 473 8640 for more information.

### DUNEDIN BMX CLUB

Race night, Forrester Park BMX track, 6pm, Thur.

### FOLK DANCING FOR FUN

Baptist Church, 270 North Rd, 10am-11.30am, Fri, \$4. Ph Yvonne 455 2406, stureid1@yahoo.co.nz

### KUNG FU

Fitness, discipline and self defence. Classes for 7-12 years Wed, 5-6pm, Sun, 3-4pm, teen & adult classes, Wed, 6-7.30pm, Sun, 4-5.30pm, Nga Maara hall. Contact Kenneth Dunedin@shaolinkungfu.co.nz or 022 094 6357.

### PARKRUN

A free, weekly timed 5km run/walk, Sat, Botanic Gardens. Meet at café, 8am summer, 9am winter. Go to parkrun.co.nz for more info.

### SPAN NEV

Stretch'n'flex, low-impact exercise, fun and friendship, community rooms, 262 North Rd, 10am-11am, Tue, over-65s, \$4. Ph 473 9311. Please use answer phone if no answer.

### STEADY AS YOU GO

(Age Concern) Gentle balance and strength exercises, NEV Baptist Church, 10.30am-11.30am, Mon, and Pine Hill School Library, 11am, Thur.

### SPORTS AEROBICS

Competitive aerobics and casual fitness classes. No previous experience required. Training held at DNI Fri and Sun. Working towards NZCAF regionals next August. Contact rebeccafishernz@yahoo.co.nz

### TANNOCK GLEN

The 3.5acre garden of the Dunedin Rhododendron Group is situated in Torridon St, Opoho. Members of the public are invited to visit at any time. Dogs permitted on a lead.

### THREE LEFT FEET

Social dance group, no experience or partners necessary. European dance-folk and traditional, \$5 or \$7.50/couple, Nga Maara hall, 6pm-7pm, Thu. Ph. Marilyn 473 7829.

### ZEN MEDITATION

ZEN Meditation - NEW venue for Dunedin Zen Group: Thursdays 7pm at the Quakers Rooms, 15 Park St, Dunedin North. Traditional Zen suitable for both beginners and experienced people. Koha. Registrations for annual 7 day Zen Sesshin on Quarantine Island

Nov / Dec are limited this year.

### YOGA IN THE VALLEY

Instructor Adair Bruce, 6-7pm, Mon & Fri, DNI designspace; 9.15-10.15am, Mon, Wed, community rooms. \$10 waged, \$8 unwaged, for more info contact adairbruce@hotmail.com

## further education

### CITIZENS ADVICE

Dunedin Citizens Advice Bureau - a free confidential service for all. We can help with tenancy problems, employment issues, consumer problems & host of other issues. Rodgers House, 155 Princes St, 471 6166, cab.org.nz

### FRENCH TUTOR

Beginner to advanced, 30 years experience, hourly rate, ph 473 0159 evenings.

### INDOOR BOWLS

Play indoor bowls at the NEV Bowling Club, 139 North Rd, Thurs, 1.30pm start. Ph. Jack for more info 473 9565.

### ITALIAN CLASSES

Experienced teacher, native speaker of Italian.

ph 027 3418312, 473 0832

antonella.vecchiato@gmail.com

[www.italianclasses.co.nz](http://www.italianclasses.co.nz)

### LEARN ENGLISH

English for daily life and work. Free and low cost courses. Contact Tamara or Felicity at English Language Partners 455 5266.

dunedin@englishlanguage.org.nz

### SPANISH LESSONS

Learn Spanish in a fast and fun way. All levels and wide time availability. Ph Luana 027 284 7836 or luana.suarez26@gmail.com

### STAND-UP COMEDY

Open mic at Inch Bar, 1st & 3rd Thursday every month. Comedy workshop classes every other Thursday, open to all skill levels. For more info contact reuben@dunedincomedy.co.nz

## art, craft & music

### ART CLASSES

For all levels, casual attendance welcome, tutor Anneloes Douglas, community rooms, 10am-noon, Thur and 6pm-8pm, Fri. Ph 027 307 7034, 467 9993, anneloes.douglas@xtra.co.nz

### ART CLASSES

Continuous class, newcomers welcome, 1-3pm, Wed, community rooms; 1-3pm, Thurs, St Peter's Church Hall, Caversham; 7-9pm, Thurs, Logan Park High School, \$15 per session. Ph Fried-

erike 482 2025.

### KNITTING SQUAD

BYO knitting or crocheting, or come & learn, community rooms, 1pm-3pm, Wed. Ph Marjory 473 7751.

### ART FIBRE DUNEDIN

Bring lunch and requirements, 10am-3pm, second Sun each month, community rooms, Ph Viv 473 0343, [www.artfibredunedin.blogspot.com](http://www.artfibredunedin.blogspot.com).

### DUNEDIN FIDDLE CLUB

Community rooms, 7.30pm, Wed.

### MUSIC LESSONS

Guitar, drums, singing, with professional musician. All ages. Contact Bevan bevan37@hotmail.com or ph 027 363 1376.

### SOUNDS NOR'EASTERLY

Do you enjoy singing with a group? Why not join your local community choir? All ages and abilities welcome. DNI design lobby every Tues, 7.30-8.45pm. Email Clare for more info clare-n-don@clear.net.nz

### UKULELE SESSIONS

Wed, 7-8.30pm, Baptist Church, 280 North Rd. Just turn up or text Adrienne 027 389 2574 for more info.

### WOMEN'S ART GROUP

Restarting in Spring. An art & craft group aimed at helping new Dunedin residents learn & share skills & connect with others. Tues, 1pm, community rooms, 262 North Rd.

### LEARN TROMBONE

From winner of Dunedin Youth Jazz Festival best trombone and Otago Rockquest best musician - contact Finnbar ph 0273562881 fin.mckinlay@gmail.com

## community

### BIBLE HOUR

Friendly small group Bible learning over morning tea, Sun, 9.30am, DNI (tech area) during school terms. All welcome, free, ph 020 4079 5727 or [www.dunedinchristadelphians.org](http://www.dunedinchristadelphians.org)

### BIKE WORKSHOP

Get help, use our workshop, bikes available for koha, 3.30-6pm Tues, and 9.30am-12.30pm Sat, Valley Community Workspace, 11 Allen St. Contact Peter on peterd0n@yahoo.com

### COMMUNITY ACCOUNTING

Dunedin Community Accounting provides free accounting training & advice for non-profits in Otago. For more info call 0800 113 160, [kiaora@dca.org.nz](mailto:kiaora@dca.org.nz) or [www.dca.org.nz](http://www.dca.org.nz).

### ENABLING LOVE

Looking for friendship and social connection? 18-65 years welcome to our weekly coffee group at Otago Museum cafe, Thurs, 1-2pm. More at [www.enablinglove.nz](http://www.enablinglove.nz) or contact Joshua for venue at [enquiries@enablinglove.nz](mailto:enquiries@enablinglove.nz)

### DUNEDIN REFUGEE & MULICULTRAL WOMEN'S GROUP

Dunedin Refugee Centre, meet community rooms, 262 North Rd, 9.30-11.30am, Fri. Ph Afife 473 8944.

### FRUIT & VEGES NFP

Fresh fruit and veges at wholesale prices with All Saints Fruit and Veges. Small, med, family weekly bags. Order at St Martins, 194 North Rd, Thur, 4.30pm, or sign up online [fruit.vege.allsaintsdn.org.nz](http://fruit.vege.allsaintsdn.org.nz)

### LEGAL ADVICE

Free legal advice at Community Law Otago, available by appointment. Legal advice by qualified lawyers, practical solutions.

Telephone 03 474 1922 or email [reception@dcl.org.nz](mailto:reception@dcl.org.nz) to make an appointment.

### MEN'S PROBUS

NEV bowling club, 10am, 2nd Mon each month, new members welcome. Ph Peter 455 1256, [peabee@xtra.co.nz](mailto:peabee@xtra.co.nz) or ph Don 473 7544.

### DALMORE COMMUNITY GARDEN

Pine Hill, Dalmore Reserve entrance on Allenby Ave, We need more gardeners, please get in touch if you can help or come along to one of our working bees on the 2nd and 4th Sunday each month at 3pm. [dalmorecommunitygarden@gmail.com](mailto:dalmorecommunitygarden@gmail.com)

### NORTH EAST VALLEY COMMUNITY GARDEN

The NEV Community Garden is directly behind NEV school. Pay us a visit! We meet every weekend: hours in the Valley Garden section in this Valley Voice.

### DUNEDIN MAKERSPACE

Work on project, watch others and chat, 1pm-5pm, Sat; organised talks, 7pm, Thur, Valley Community Workspace, 11 Allen St.

### NEED A JP?

Contact Colin Lind to arrange to meet, ph 473 7174 or 027 733 0066 or [colin@lind.co.nz](mailto:colin@lind.co.nz).

### NORTH DUNEDIN SHED

New members welcome. Open Wed and Sat mornings 35 Bonnington St over bridge. Find us on Facebook: North Dunedin Shed Society Inc

## NEIGHBOURHOOD SUPPORT

Create safer, more caring communities. For more info and local contacts ph Joy Davis on 456 0857 or neighbourhoodsupport@gmail.com.

## COMMUNITY PATROL

Dunedin North Community Patrol. Assisting Police to ensure our communities are safe to live in. Volunteers welcome – for info call Garry on 027 3641485

## trading corner

### BABYSITTER

Experienced 23 year old, have worked with children of all ages. Ph Kelly 027 697 9194 .

### BABYSITTER

High school student available for babysitting evenings and weekends. Ph Laura 027 905 9911 after 4pm.

### BABYSITTER IN NEV

Experienced, 26 year old, children of all ages. Wide hourly availability. Ph Luana 027 284 7836 or luana.suarez62@gmail.com

### CAKE BAKER

Home-baked cakes large/small for your pleasure. Made to order. Price list available. Ph 473 0159 evenings.

### COMPUTERS

I fix computers! Low rates, great service, Windows, Linux, Mac, Android. Call Matt 022 048 0012.

### GARDENER

Gardener available, light weeding/trimming, winter rose pruning, very experienced, \$25/hr, ph 473 0159 (evenings)

### HAIRDRESSER

Retired senior hairdresser providing service for seniors. Your home or mine. Dunedin North only, ph Helen 467 9644 or 021 104 1011.

### LOG SPLITTER

Commercial power Briggs & Stratton Model 12000 Vanguard. Local pick up & delivery with full tank, \$50/day. User responsibility, ph: 473 0393.

### GARDENER AVAILABLE

Mature woman seeks gardening work, phone Jude 4731650

### SLEEPOUT/SMALL COTTAGE WANTED

Wanted to rent in Pine Hill or North Dunedin.

Please contact Des 027 7828 900

## COM2TECH

Classes, device help, Skinny JUMP setups.

Tuesday 3.30-5.30pm Valley Baptist Community Centre-Tech Space.

CodeClub4Teachers

CodeClub4Kids

Wednesday

10.30-12.30 Valley Project

3.30-5.30 Valley Baptist Community Centre-Tech Space.

CodeClub4Kids

Stepping up

Better Digital Futures

Contact: Amy Souquet

Phone: 0272569182

Email: amy@com2.tech

Web: www.com2.tech

Facebook @Com2Tech

## Belleknowes Golf Club

Green fees \$15  
(after 4pm \$10/player)

Come & enjoy our fantastic 9-hole golf course on Lawson Street

Twilight golf starts October  
Spectacular views over the city  
Secretary, Christina King, 467 9499

## for families, kids & teens

### ACTIVE MUSIC

For 0-5yrs, with Yvette, 10.30am Wed, Valley Baptist Community Centre, 270 North Rd, ph 473 9413 or nevplaygroup@gmail.com

### DUNEDIN TOY LIBRARY

A vibrant toy library for children from birth to 7 years. Huge range of toys, ride-ons, dress ups, puzzles, games. NEV Baptist Community Centre, 270 North Rd,, 3.30-4pm Wed, and 10-11.30am Sat.

### GIRLS BRIGADE

Dunedin Girls Brigade Company, all girls, from age 5 up welcome, 6-7.30pm, Wed, St Marks Presbyterian Church Hall, 304 Pine Hill Rd.

### MT CARGILL GIRLGUIDES

Pippins, brownies, guides and ranger groups in the valley, ph 0800 222 292 or info@girlguiding.org.nz

### OPOHO PLAYCENTRE

Opoho Playcentre is a nurturing play space for 0-6 year olds where children and their whānau attend together. Our focus is on child-led learning through play. Come make friends, play, learn, and grow. Three free visits. 28A Signal Hill Road. Mon -Fri 9 am - 12 pm following school term times. Find us on Facebook, contact us at opoho@playcentre.org.nz, or ph: 03 473 0819

### OPOHO SCOUTS

Keas, 4pm-5pm, Tues; Cubs, 6pm-7.30pm, Thur; Scouts, 7pm-8.30pm, Wed. Opoho Scout Den, ph Kevin

0800 SCOUTS.

### PLAYGROUP

Leith Valley Church, Malvern St, 10am-noon, school terms, ph. Julia 027 635 8181.

### PRESCHOOL MUSIC

At Opoho School, 9am-9.30am, Fri, during school term, Room 3, gold coin, drop in, ph 473 8019.

### SUNDAY SCHOOL

Variety of classes with stories, crafts, songs and more. Ages 4-18, 9.30am Sun (term time only), DNI (tech area). All welcome, no charge, ph 020 4079 5727 or www.dunedinchristadelphians.org

### SPACE FOR BABIES

Programs run by registered ECE teachers supporting families through their first year with a new baby, school terms, 12.30-2.30pm, day TBC, Valley Baptist Community Centre, ph 473 0014 or space.valleybaptist@gmail.com

### NEV PLAYGROUP

For 0-5yrs, variety experiences to enhance development of your child, meet other local young families, free morning tea & lunch provided, Valley Baptist Community Centre, 270 North Rd, 9am-2.30pm Tue & Wed, ph 473 9413 or nevplaygroup@gmail.com

### RUDOLF STEINER

Te Whare Ako Marie, Pinehill & Maria. A sanctuary for creative play for children from birth to kindergarten, a place of peace & friendship for parents. Groups meet weekly, term time, ph 471 2163 or dunedinsteinerplay-

## church services

Salvation Army, 43 North Rd, community worker only, Mark O'Donnell

Sacred Heart Catholic, 89 North Rd, Mass 9.30am

Glenaven Methodist, 7 Chambers St, 11am

Pacific Island Presbyterian, 160 North Rd, English 11am on 1st, 2nd and 3rd Sundays; Cook Island 9.30am; Samoan 11am, 4th and 5th Sundays

Anglican: St Martin's, 194 North Rd, 10.30am

St Thomas', Raleigh St and Pine Hill Rd, children & family service, 4.30pm, 3rd Sunday

Opoho Presbyterian, 50 Signal Hill Rd, 10am

NEV Presbyterian, community rooms, 9.30am, first, third and fourth Sundays, cafe service, contact Cameron Sinclair on sinclairs@snap.net.nz

St Mark's Presbyterian, 304 Pine Hill Rd, 10am

NEV Baptist, 270 North Road, 10.30am.

Classified listings: please email voice@northeastvalley.org to update or add a listing, before October 20th please. Koha is appreciated, but not essential, for classifieds.

# Wild about Dalmore reserve



Claire, Charlie (dog) and Jon get stuck into digging and planting at the reserve.

**East Coast massage**  
 Karen Mayhew  
 Diploma in Holistic Massage (ITEC)  
 021 025 49418  
 Myofascial Release    Deep-tissue Massage  
 Trigger Point Therapy    Oncology Massage  
 Cupping Therapy    Swedish/Relaxation  
 Professional Effective Therapy  
 East Coast Massage  
 North East Valley, Dunedin

**Wendy Bowman**  
 Dedicated to delivering  
 an outstanding  
 client experience  
 Contact Wendy  
 P. 474 7070  
 M. 027 609 7599  
 wendy.bowman@harcourts.co.nz  
 wendybowman.harcourts.co.nz  
**Harcourts**  
 Highland Real Estate Group Ltd  
 Licensed Agent REAA 2008

**Need a painter?**  
  
 • inside or out  
 • no job too small  
 • waterblasting available  
**COMPETITIVE RATES & QUOTES**  
 Contact Bryan  
 473 7488 or 021 108 1860  
 porteous.a.b@gmail.com

**Invest with confidence**  
  
 Lyn Howe,  
 Authorised  
 Financial  
 Adviser  
 lyn.howe@forsythbarr.co.nz  
 (03) 477 7464 | forsythbarr.co.nz  
**FORSYTH BARR**  
 Disclosure Statements for Forsyth Barr Authorised Financial  
 Advisers are available on request and free of charge.

**WE ARE** Wild Dalmore Reserve, a new group with over 40 mostly local volunteers on a database that's growing almost daily. Planting native trees is one important part of our group's vision to have a reserve that's rich in native biodiversity, that the local community can care for and enjoy.

Owned and managed by the Dunedin City Council, Dalmore Reserve is 6 hectares of 'hidden gem' situated on the southerly slope of Liberton/Pine Hill just beyond the lovely Dalmore Reserve Community Gardens. Its steep southerly aspect and single official entrance on Allenby Ave has made it a perfect hideaway place for Nature to flourish.

The lower part of the reserve is about 4.5ha of naturally regenerating native bush. Above this there is a young mixed podocarp native forest that was planted by the DCC and Pine Hill School pupils in 2008. This bush replaced a plantation of tall exotic pine, logged the previous year.

City Sanctuary, who are part of Predator Free Dunedin, have identified Dalmore Reserve as one of their ten priority reserve sites. With their, and OpenVUE's support, we have carried

out some predator monitoring. Rats, mice and especially possums enjoyed eating the peanut butter impregnated chew cards we set.

If we can suppress invasive mammals with the help of Predator Free Dunedin, protect and improve the reserve's native habitat and give the wildlife space, then the biodiversity will return. Someday there may be brown creeper, robin, tomtit and even riflemen living and breeding here once again.

If you would like to be part of restoring Dalmore Reserve to one rich in native biodiversity, then we'd love to hear from you. There's plenty to do! We are brewing plans and volunteer opportunities that include - surveying what is in our reserve (vegetation, moths, birds), finding out more about the history of the site, ramping up predator and weed control, tree planting and care, rubbish removal, and overseeing the natural native habitat regeneration. What an amazing community conservation project for us, right on our doorstep!

To get involved, contact us through our Facebook site (Wild Dalmore Reserve) or contact Maureen on 021 206 3593.—Maureen Howard

## Send us your stories and photos!

We welcome contributions to the Valley Voice, **your** community newspaper. We have a strong emphasis on the hyper local - what is happening in your neck of the woods?

Stories will ideally be 3-400 words and include a photograph. Please provide the full names of any one featured (and get their permission too!). You can also submit to our in-brief or what's on sections.

Please submit stories to [voice@northeastvalley.org](mailto:voice@northeastvalley.org) by the 20th of the month.