



Mclver Building

**New Builds
Extensions
Renovations**

25yrs in the industry - NZ & AUS
Registered Building Practitioner

FREE QUOTE
Dave: 027 703 5896



Tim McGuire
LET'S MAKE IT HAPPEN

To book a free property appraisal or for any other real estate questions, call **Tim now**

027 562 7207
hello@timmcguire.co.nz
timmcguire.co.nz

ONE AGENCY
THE PROPERTY SPECIALISTS
LICENSED (REAA 2008)



VALLEY ARBORISTS
Complete Tree Care

Make contact for free quotes for tree care by a professional and qualified arborist.

022 302 3607 (Sam)
valleyarb@gmail.com




Plumbing Laser

"Murray and Corey Ford proudly servicing the Valley for 25+ years"

- Plumbing - new and existing
- Gas fitting
- Drainage

(03) 456 3178
369 King Edward St. South D.
dunedin.central@laserplumbing.co.nz



BACK-TO-BACK VALLEY PROJECT BURGLARIES: LESSONS FOR OUR NEIGHBOURS

Apologies. We did not expect to close the year with such a downer headline. It's a timely one, however, and serves to improve the safety of our communities; the silver lining in our unsettling encounter with ill-willed opportunists.

In the first half of November, Valley Project operations were greatly disrupted after the discovery that a single missing laptop was the prelude to a grander scheme. The first night of thievery was almost questionable, but the second immediately following it generated significant losses.

Thankfully there was no damage done to the Valley Project community rooms and offices. While the crimes are classified as "forced entry," the perpetrators were rather tidy about it. Where they weren't was in the expenditure of their loot thereafter. Within 10 hours of the second break-in, Valley Project staff and Gardens New World management were hot on their tails. Between us all we had collected leads faster than it took to have the premises fingerprinted.

The investigation is now in the hands of authorities, but the Valley Project has yet to emotionally and financially recover from the consecutive break-ins (of which, according to the Ministry of Justice, is tendency for 23% of burgled properties in New Zealand). As a result of all parties involved in the 'clean up', we've collected a wealth of information and resources around the hot topic of crime prevention.

Kieran Harper of McArthur & Symons Electrical was quick to change all of the Valley Project interior and exterior door locks. He reminded us that when you settle into a new house or commercial property, immediately replace all exterior locks with new ones for *(Continued on page 3...)*

RayWhite

Local People Selling Local Property

Jane Bokser | **Colleen Townsend**
027 473 6221 | 027 226 5482

Ray White Dunedin Proven Realty Ltd Licensed (REAA 2008)

heads UP!

COMMUNITY DIRECTORY

Local web developer, Turboweb, and a dedicated team at the Valley Project, are together furiously working to get the new directory website up and running as soon as possible. To include your business, club, or group for FREE and in time for the grand reveal, please email aleisha@northeastvalley.org or fill out the application form at <https://bit.ly/3oXwRXT>. This exciting development is part of our continuous effort to build a thriving community.



ADVERTISING OVERHAUL

Along with the new Community Directory we'll be launching an improved system of advertising with the Valley Project. In 2022, all current and prospective advertisers will be offered open-contracts; pay monthly and discontinue upon request by simply contacting Krysha at voice@northeastvalley.org. Ads within the newsletter will "shuffle" within their respective price tiers to maintain visual interest. And every paid ad will earn a top spot within the directory website. Details will be provided to all once they are finalized. Stay tuned.



HOLIDAY OFFICE CLOSURE

The office will be closed for the holidays between the listed dates of **Saturday, 18 December** and **Monday, 7 February**. Due to this closure there will be no January issue of the Valley Voice newsletter. Any newsletter content and contributions, however, are graciously accepted year-round. voice@northeastvalley.org

Dec 2021							Jan 2022							Feb 2022							
			1	2	3	4	30	31					1				1	2	3	4	5
5	6	7	8	9	10	11	2	3	4	5	6	7	8	6	7	8	9	10	11	12	
12	13	14	15	16	17	18	9	10	11	12	13	14	15	13	14	15	16	17	18	19	
19	20	21	22	23	24	25	16	17	18	19	20	21	22	20	21	22	23	24	25	26	
26	27	28	29	30	31		23	24	25	26	27	28	29	27	28						

what's ON?



CRUSH THE CARGILL FUNDRAISER

The annual 24-hour endurance race on the slopes of our maunga is just around the corner. Come along as participants or as spectators. Canine category included. Volunteers still needed. Koha entry event to raise funds for the Valley Project.

SAT. DEC. 11, 10am - SUN. DEC. 12, 10am
BETHUNE'S GULLY RESERVE
Facebook: @CrushtheCargill

give a little
<https://bit.ly/3pch7QC>



NAPHTALI MARKET FUNDRAISER

Car wash, sausage sizzle, ice cream truck, santa lolly scramble, photo booth, veges & plants, bath soaps, baking, cheese rolls, clothing, art, music, and more! Come along to help raise funds for Pact Group so clients can attend camp next summer. Cash-only event. If you wish to have a stall here, please contact Chris: 03 473 9104

FRI. DEC. 17, 10:30am - 1pm • THE SALVATION ARMY HALL • 43 NORTH ROAD



RENNIE PEARSON

Grounded in Celtic musical traditions, multi-instrumentalist, Rennie Pearson, will take you on a journey through history in an engaging, varied performance.

THUR. DEC. 16, 8pm
THE INCH BAR, 8 BANK STREET
TICKETS \$20: renniepearsonmusic.com
Facebook: @renniepearsonmusic

The Valley Project is a registered charitable organisation that builds community connections and promotes the wellbeing of local families and whanau. If you like what we do, you can donate at:

www.givealittle.co.nz/northeastvalley

The opinions expressed in articles are the author's own and are not necessarily shared by the editor or Valley Project Team. Submitted articles may be edited at the editor's discretion.

(03) 473 8614

voice@northeastvalley.org

facebook.com/valleyproject

@valleyproject

P.O. Box 8118 - Dunedin 9041

262 North Rd. North East Valley, Dunedin



We'd love to hear from you! Send us your local photos, stories, milestones, etc. Deadline for newsletter copy is the 20th of the month prior. Submissions later than the 20th cannot be guaranteed space. Please keep your contributions to 250 words or less.

(Continued from front page) protection from previous occupiers. He can help you do that, as well as install alarm systems, daylight and motion sensed lighting, and CCTV.

On the subject of locks, if you're in a rental, it would be good to familiarize yourself with tenancy laws around security. In short, *both* landlords and tenants are responsible for keeping a property secure. Under the Maintenance and Inspections category at tenancy.govt.nz, it's stated that if you're the tenant, let the landlord know if a property can't be reasonably secured. If it's not the tenants fault, the landlord needs to replace or repair the locks. If the landlord doesn't do this, the tenant can get the work done and then ask the landlord for reimbursement.

Dunedin Crime Prevention Manager, Senior Sergeant Craig Dinnissen, reiterates the importance of quality door and window locks. In response to our recent misfortunes, he's offered advice to the community about keeping a property safe, especially during the upcoming holidays:

"The summer months see us taking the opportunity to get away and have a break. After the year many people have had, holidays are definitely called for. Before you head away, don't just think about what you're going to take with you. Also consider what you're going to leave behind, and how you're going to secure it."

"First and foremost, ensure your home has good quality door and window locks. Don't leave any spare keys in those obvious places like under that outdoor mat or pot plant. Ensure any spare keys to vehicles you haven't taken with you are well hidden inside your home. Garages and sheds contain tools and other items that can assist burglars to break into your home so make sure any out-buildings are well secured, too."

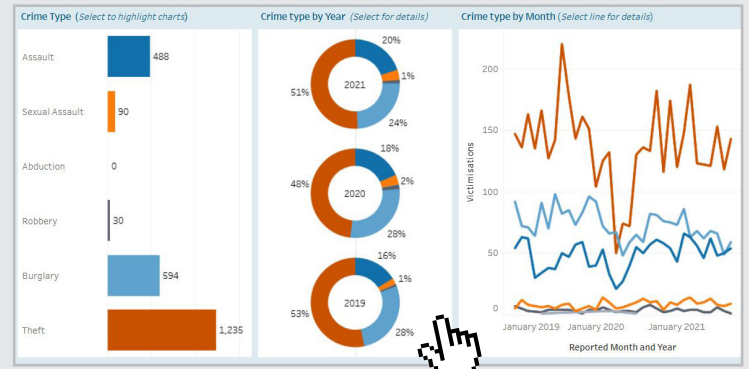
"If the garden has got away on you, give your trees and bushes a trim to ensure you don't provide burglars with convenient places to hide. Talk to a neighbour about clearing your mail box and the possibility of keeping their vehicle in your driveway while you're away. Organise for the lawn to be mowed if you are going to be gone for more than a few weeks. Think about installing a simple security camera system which you can monitor remotely."

"And remember, if you notice something in your neighbourhood that is suspicious or simply just out of character, let us know. The 105 number is an easy way you can report your concerns, either via phone or online. If it's an emergency and happening now, we still need you to call 111."

Coincidentally, Bunnings was in the middle of hosting a nationwide Crime Prevention Week when the Valley Project break-ins occurred. Phil Morley, Bunnings NZ Loss Prevention Manager, tells us the initiative was launched in 2017, aiming to help customers deter theft and fraud and keep their sites, homes, and vehicles safe and secure.

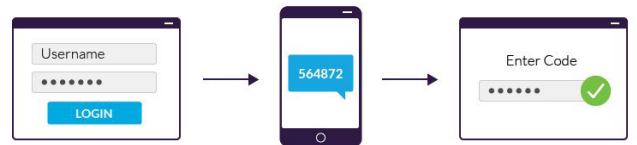
This year, the team at Bunnings Dunedin invited the local police to talk to customers about how to best protect property and reduce crime. Community Patrol also provided a Safe Plates activity to help customers protect their vehicles from number-plate theft with tamper deterrent screws. The Neighbourhood Support group helped to raise awareness by providing sessions in store around how to keep your home safe from burglaries during the upcoming holiday period.

Until the next instalment of Crime Prevention Week, refer to police.govt.nz for a plethora of resources, including security checklists, fact sheets, and printable signage.



Curious about crime statistics for our neck of the woods? policedata.nz provides up-to-date overviews and detailed reports of crime victimisations specific to selected areas. At a glance, North East Valley, Opoho, and Pine Hill have had a total of 75 reports of property crime since the start of the year, which is trending upward for 2021, but trending downward over the past three years.

As for online security, our Valley Project IT tech, Rob Teiger, strongly suggests using two-factor authentication between applications. It works by adding an additional layer of security to your online accounts by requiring multiple login credentials i.e. automatic pin verification sent to your phone whenever you log into your email account from a new device or location. A little inconvenience will save you a lot of it down the road. He also warns against using local drives for data storage. Instead, utilize a cloud system in which data is stashed on hardware in a remote physical location and strictly accessed via internet.



Burglary is invasive and violating. Losing a sense of safety can be highly distressing. Sally from Victim Support adds that we shouldn't underestimate the impact of experiencing a property crime, no matter its scale. A good starting point towards emotional recovery is visiting victimsupport.org.nz or phoning **0800 842 846**. She says it's important to keep communication open and make our feelings known. If anxiety persists, free counselling can be arranged by connecting with a GP. Over-the-phone counselling without a GP referral is accessible around the clock at **1737**, a free community healthline.

Though we've been a bit scrambled since the burglaries, the Valley Project staff are a resilient bunch. We're trying to get our ducks back in order amidst the usual end-of-year frenzy, and prioritizing property security to boot. It's all the more manageable knowing the strength of our community networks and the degree of support readily available to us and our Valley whanau. Stay safe, everyone! -- *Krysha Brzuza*

TAKING STEPS TOWARDS OUR BACKYARD ECOSANCTUARIES

Within the last month there has been so much going on towards enhancing the habitat corridor that links Orokonui Ecosanctuary and wider Dunedin, all things that we couldn't do without you! We have been so grateful for all of the support and enthusiasm for the Open VUE project and Backyard Ecosanctuaries programme over the past year. This month we were involved in the Waste-Free Spring Spree workshops, as well as large-scale rat trap production with the North Dunedin Shed.



Taylor inspecting an array of plants provided by a workshop attendee

A WEEDY AFFAIR

Last month, Orokonui Ecosanctuary educator, Taylor Davies-Colley, led Weed Identification workshop attendees through the world of weeds, or more specifically, environmental weeds — as I found out! There are various types of weeds; those that disrupt agriculture (agricultural), those that are unpleasant to look at (aesthetic), and those that have a negative impact on the environment (environmental). Environmental weeds were the focus of the workshops. Plants that could be considered environmentally weedy are often introduced to a new area and, subsequently, have detrimental impacts on the surrounding environment. In example, the aesthetically pleasing Russell lupin (*Lupinus polyphyllus*) grows on the banks of braided rivers, binding up the gravel and keeping it in place, making the river banks unsuitable for some nesting birds. They turn the environment from a normally transient system into a permanent one. Weedy plants are also considered as such because they grow quickly, have a habit of taking over their surrounds, have long dispersal distances, and like growing in disturbed areas.

Disposing of these pest plants can sometimes be difficult, unfortunately. Be careful with species such as *Tradescantia* "Wandering Willie" (*Tradescantia fluminensis*) which can regrow from any length of cuttings. Fortunately, the commercial

composting system at our local transfer station gets hot enough to kill these plants. For seed dispersed plants, removing nearby seed sources can help to prevent certain species from returning, like Tree Privet (*Ligustrum lucidum*).

In addition, we don't yet know what the impact of climate change and warmer temperatures might mean for invasive plant growth, but it's likely that some species that aren't weedy just yet may become so. In Auckland there are far more weedy species than in Dunedin due to the temperature difference.

If you're out in your backyard and wondering how to identify different plants, what species they might be, and if they're weedy, try using the *iNaturalist* app. *iNaturalist* uses 'machine learning', a type of artificial intelligence, as well as expert knowledge to identify plants (or any living thing for that matter). *iNaturalist* may also be used to help the ORC when targeting certain species such as Old Man's Beard (*Clematis vitalba*).

The next steps are to check out Weedbusters.org.nz, the ORC's pest plant list at orc.govt.nz, and DOC weed identification guides at doc.govt.nz/nature — websites chock-full of information about the different weedy species and how to manage them.

If you didn't get a chance to attend the workshop in person, a recording of it will be made available on Open Vue social media.

-- Clare Cross



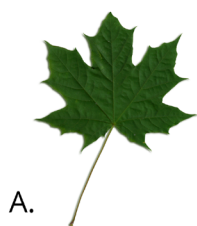
KIDS CORNER Match the plants

Can you match the names of these plants with their pictures?

These are all plants that are considered environmentally weedy. Check out weedbusters.org.nz to find out why! Answers below.

1. Lupin ____
2. Sycamore ____
3. Tree Privet ____

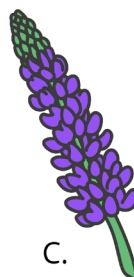
Psst, use the Seek app to help you identify them!



A.



B.



C.

Answers: 1) Lupin - C 2) Sycamore - A 3) Tree Privet - B

TRAP LIBRARY OPENING TIMES

Keen to catch that pesky rat or find out what's lurking in your backyard?

The Trap Library is open during normal Valley Project opening hours **(Tues - Fri 10am - 2pm)** up until 17 December, reopening 8 February '22.

Come get a rat trap, monitoring device, and friendly advice!

OPEN VUE SUPPLIES AND SERVICES



PekaPeka Bird Feeder Kit
Feed sugar water and fat balls to backyard birds. Yours for \$80.



Trap Box & Rat Trap
Free to borrow.

Great gift idea!



Possum Trap Installation
Free to borrow, as well as free installation.



Chew Cards
Identify predators in your backyard using chew marks. Free to keep.



Tracking Tunnels
Identify predators in your backyard using footprints. Free to keep.



Trail Camera Hire
Motion sensitive cameras that video/photograph backyard wildlife. Hire \$30/wk, \$50/x2wks. \$20 bond.

openvue@northeastvalley.org

(items unavailable over holidays: 17 Nov. - 8 Feb.)



TRAPBOX MOUNTAINS

What more could one want when collecting a mountain of trap boxes? How about two! We popped by the North Dunedin Shed while they were in full assembly line; cutting wood paling to size, hammering the pieces into signature shape, cutting wire mesh ends, and putting it all together — 200 boxes in all and many more to come! They have an entrance on one end and a wire mesh gate at the other to enable removal of a trap.

These trapboxes are being built as part of our collaboration with Predator Free Dunedin's City Sanctuary Project and North Dunedin Shed to encourage residents within the Lindsay Creek catchment area to get on-board with backyard trapping.

If you're keen to grab your own trapbox to catch rats, come and see us at the Trap Library during Valley Project opening hours.

If you're after possum traps, our friendly Community Trapping Coordinator, Emily, can come and install these on your property. Please contact emily@northeastvalley.org



PARASITES A CHRISTMAS ICON

Like many things Christmas, I assumed that mistletoe was a semi-mythical northern hemisphere import. Again, I was wrong: we have eight native mistletoe species in New Zealand that are only found here. Mr. Jack even pointed to one outside our laundry window, which I have looked at many times but never seen.

I lured botanist and mistletoe enthusiast, John Barkla, over with cake to tell me all about our mistletoes. Ironically, there's nothing very Christmas-spirited about mistletoe; there is little in the way of giving and much in the way of taking, because mistletoe is a parasite. Or a hemi (partial) parasite, to be precise. It lives on a host tree, where its roots tunnel into a branch to feed off water and nutrients. But it also has green leaves, so it can also photosynthesise its own food. Mistletoe can even parasite other mistletoes!

Of our eight native species, three are shrubby leafy mistletoes that prefer growing on southern beech trees (two *Peraxilla* spp. and *Alepis flavida*) and have bright red or orange flowers around this time of year. However, in Dunedin we are more likely to see the other two shrubby leafy mistletoes that are less fussy about who they grow on (*Ileostylus micranthus* and *Tupeia antarctica*).

Ileostylus in particular is fairly common in coastal Otago compared to other parts of the country — there was even one growing on a tree in the Octagon for a while until someone decided it should go because it was a parasite! This mistletoe is flowering now with inconspicuous little green flowers, which can be hard to spot against the foliage of its hosts. Come autumn though, it will erupt with more obvious little yellow or orange berries. There is one in an oak tree in Chingford Park where the walkway from Ainslee Terrace meets the driveway — look up and you'll see the little shrub with rounded leaves growing on one of the branches. There are also some in the Northern Cemetery near the Sexton's Cottage and another in a tree outside Caroline Freeman College on the one way South.

You'll have to look even closer, though, to see one of our three dwarf species (*Korthalsella* spp.). They look like their host plant so they're hard to spot, and they don't bare leaves, instead having tiny flattened green branches and even tinier berries. Keep an eye out for one hiding in a coprosma on the Bullock Track up to Prospect Park and some on kanuka around Ross Creek.

Mistletoe sometimes gets a bad rap for its parasitic ways, but John pointed out there is much to celebrate about our native mistletoes. They don't appear to bother their host much (it is in their best interests not to) and they have a special relationship with our native birds. Tui and bellbirds in particular scoff the berries and then poo the seeds out onto whatever unsuspecting branch the bird happens to be sitting on. The seeds have a sticky coating, which helps them adhere to the branch where they germinate and make themselves at home. You can shortcut this process yourself by squeezing the seeds from the berries and smearing them onto the branch of a tree.

Mistletoe have fewer trees to live on than they used to, there are fewer birds to help spread them and, unsurprisingly, possums love them, so most of our mistletoes are threatened. In fact, we had another mistletoe, *Trilepidea adamsii*, but no one has seen it since the 1950s; it is one of only a few species of plant in New Zealand to go extinct.

So what is it with mistletoe, Christmas, and kissing? Mistletoe is associated with fertility in many cultures and its berries are out during the northern hemisphere Christmas time.

Have a look for mistletoe in our neighbourhood. Once you get your eye in you'll see them around, and (depending on who you are with) you might even get in a sneaky Christmas pash.

Until next year.... XXXX -- Helen Jack



The star-shaped flowers and rounded leaves of the common mistletoe *Ileostylus micranthus* in the Northern Cemetery



'TARRAGON' FRENCH FOR YUMMY

One herb that does really well in the Dalmore Reserve community garden is French Tarragon (*Artemisia dracunculus* 'Sativa'). It's a perennial plant which means it dies down in winter and comes back to life in the Spring. It is relatively hardy and because of this it doesn't need a lot of water and grows for a long season. It spreads easily, so it's best in a contained area unless you want a paddock of it!

The species name, *dracunculus*, means "little dragon," and the plant seems to be named so due to its coiled roots. It tastes a combination of dill, pepper, licorice, and vanilla — rather unique in its balance of bitter and sweet. Tarragon can easily overpower the dish with its flavor, so use it sparingly.

Tarragon is used a lot in French cooking, especially with chicken, but it's also nice in salads and salad dressings. The first time I had it was in a dressing called Akaroa French Dressing, made by a friend. I'm pretty sure it was a Gillian Poulson recipe. Poulson lived at Herb Farm in Akaroa and was a founding member of the Canterbury Herb Society. The dressing is absolutely delicious and well worth making. Tarragon keeps well in the fridge and is the bomb on potato or egg salad. Recipe below. Give it a go! If you need some tarragon, we've got lots. If you'd like some to grow some on your own, email us and we'll get you sorted: dalmorecommunitygarden@gmail.com

DALMORE GARDEN WORKING BEES		
Sat.	Dec. 12	10am
Sun.	Dec. 19	4pm
Sat.	Jan. 8	10am
Sun.	Jan. 23	4pm

Akaroa French Dressing

- 3c cold pressed safflower oil (I use grapeseed; don't use olive oil, too strong)
- 1c cider vinegar
- 6 cloves of garlic
- 1dsp honey (use maple syrup if vegan)
- 1tsp paprika (mild or sweet)
- 12 small sprigs of tarragon
- 2 sprigs parsley
- 1dsp granulated kelp (can omit and just add some salt at the end to taste)



Put everything into a blender/liquidizer and blend for 1/2 a minute. Store in the fridge.

shop • eat • drink • services toa • kai • inu • ratonga



POWDERPUFF
Dog Grooming

14 Bank Street, North East Valley
Dunedin 9010

Contact Dom 020 413 36 750
powderpuffdoggrooming.com
info@powderpuffdoggrooming.com




Dunedin Electric Bikes

new & recycled ebikes

Valley Community Workspace
11 Allen St, NEV

Monday-Friday: 9am-4pm
Saturday: 9am-2pm

Ph Nathan: 027 214 8294



ROSS CAFE

Fantastic food at great prices!

Open 7 Days: 10am-4pm
Ross Home, 360 North Road
(Inside the main entrance and foyer)



CARLI RICHTER
PHYSIOTHERAPY & PILATES

Community-based Pilates
Small Classes
Wednesday Evenings
Valley Community Rooms

Carli: 020 400 59 411

MASSAGE
for WOMEN with Uschi Heyd

- ◆ Myofascial Release
- ◆ Orthobionomy
- ◆ Swedish Massage



kindliving.co.nz 027 360 0238




Islington
Early Childhood Centre

VACANCIES FOR START OF 2022!

Quality education & care
2 - 5 years-olds
8:30am - 1:00pm weekdays
Small group sizes of 20 children
Free fees available

ISLINGTON.ECC@GMAIL.COM
16A ISLINGTON STREET, NEV
03 473 7490



TIPPLER'S
Bar & Cafe

Your friendly neighborhood bar

- ★ Happy hour everyday 4-6pm
- ★ Self-service TAB
- ★ Pokies
- ★ ATM

11B North Road
473 1795

residence
ON BLACKS ROAD

INDOOR PLANTS
LOCAL CERAMICS
WILD STOCKIST
DISPENSARY

Open Wed-Sat 11-3
6 Blacks Road, NEV
[f @/residenceonblacksroad](https://www.instagram.com/residenceonblacksroad)

SHARING THE LOVE OF KAI THIS CHRISTMAS

VALLEY KAI ACTION PLAN HUI

Towards the end of November, The Valley Project hosted a hui where locals came together to discuss ideas and generate an action plan to help improve food resilience in the valley. There were some great discussions around improving access to healthy kai such as food garden tours, improving food knowledge with workshops, and improving our food distribution. We also bounced around some creative thoughts around big-picture, longer term ideas, too. Thanks to all those who came and contributed. If you want to be involved in any of these projects, please email valleykai@northeastvalley.org



WASTE NOT, WANT NOT - FOOD TIP

Did you know New Zealanders throw away 157,398 tonnes of food a year? That's worth \$1.17 billion each year. It's equivalent to 271 jumbo jets of food that has to go somewhere to rot instead of being eaten.

Of the total waste contributors, 2nd place goes to leftovers, and that's a big one to keep in mind this holiday season. Have some easy meals planned ahead to reuse any 'nextovers'. The idea of nextovers is simple: instead of binning any uneaten food, turn your leftovers from today into new meals for tomorrow. Maybe it could become a simple frittata, toasted sandwiches or wraps, or perhaps you could portion up some lunch boxes for the freezer. What are your favourite uses of nextovers? To ensure your food is safe, put your leftovers back into the fridge as soon as you can, and always reheat until piping hot. www.lovefoodhatewaste.com/article/make-the-most-of-your-leftovers

KAISHARE OVER SUMMER

Keri from KaiShare has been busy working with Valley Kai on ways to improve our food distribution network to ensure everyone can have access to healthy kai this Summer. KaiShare continues to support families in the valley with regular food boxes from our locally developed food rescue provider, KiwiHarvest.

There are two weeks that KiwiHarvest doesn't donate to KaiShare over Christmas and New Year, so if you're in a position to be generous during this time, we have some suggestions about how you can help: Donate to KaiShare directly on a Friday morning - get in touch with Keri (keri@northeastvalley.org); Fresh veges are always in demand, so feel free to share your garden's bounty; If you're going to be 'refreshing' your fridge before a holiday, pass it on to KaiShare; Make an anonymous Facebook post to *The Valley Exchange*, saying when your donated items will be available in the Valley Food Pantry.

DONATE-A-DAY INITIATIVE

December is here and so are the holidays! For some families, having enough food to go around can be challenging. To help reduce this stress, The Valley Project is organising a Donate-a-Day schedule for the local food pantry. We would love individuals or groups to claim a day or two on which you donate some extra food (homegrown, bought, or made) to our pantry to help keep it stocked up over this holiday season. This will be trialled for the months of December and January. If you're interested, please check out our Facebook posts on the Valley Project page, where you can sign up and assign yourself a day to donate. This can be done anonymously if you wish. <https://rb.gy/uuahxg>



GARDENS NEW WORLD NEWCOMERS

In case you missed the official social media announcement last month, we've got some fresh faces in town! Craig and Julie Broderick, new owners of Gardens New World, say 'Hello!'

"We would like to introduce ourselves – Craig and Julie Broderick. We have taken over the New World Gardens store on 1st November 2021. We have just spent the previous 10 years as owner-operators of New World Balclutha. We have 3 children – Jess, James and Michael."

"We are very proud to be the owner-operators of New World Gardens and are committed to continuing to provide an amazing shopping experience for you and to supporting our community. Being the local supermarket to the North East Valley community (and beyond!) is a privilege and a responsibility we take seriously and we will strive every day to be at our best for you."

"If you shop here, you probably already know we have an amazingly dedicated team who love what they do. We are well known for having great customer service and a wonderful community feel."

"We love to support the local community and are involved with many sporting, cultural, educational and charitable groups on a regular basis. We hope to see you soon." -- Craig and Julie Broderick

2021 Local Gift-Giving Guide!



Youth Grow Garden Centre

Neighbourhood nursery offering packaged seeds and bulbs, and a range of potted plants including indoor, natives, veggies & herbs. Proceeds are used to train young people in life & work skills.

146 Norwood Street, Normanby

✉ youthgrow@psotago.org.nz

📍 @YouthGrow

McArthur & Symons Electrical

You'll be surprised by what you find in here! The shop is regularly stocked with household electronics such as rice cookers, electric kettles, electric blankets, toasters, sandwich presses, shavers, supplement mixers, clocks, and so much more.

39 North Road, NEV

03 473 8519



Terina & Co



Scroll through the Terina & Co Facebook page to shop a variety of healing crystals, cleansing packs, incense, chakra goods, beauty tools, and custom macrame creations.

📍 @TerinaAndCo

The Cranky Painter

Original art by Franky Strachan: personalized clay charms, seascape paintings, illustrations, and greetings cards for sale. If you live locally, purchases can be dropped in your mailbox or postage is free.

📍 @thecrankypainternz
thecrankypainter.com



Breads and More



Three options for Christmas Bread Boxes of assorted artisan sourdough breads and sweet pastries. Inquire and order directly through Facebook or WhatsApp.

WhatsApp: +64 22 320 9067

📍 @Breadsmore

Locals Only Shop

Not just food! You'll find oodles of giftables, too. Stroll through to find fun dishware, fancy cutting boards, ornaments, toys, and NZ-made wood, metal, & glass artworks.

132 North Road, NEV



Buds n Blossoms



Handmade natural & artisan soaps, herbal shampoo & conditioner bars. Eco-friendly, vegetarian, and vegan options. Kids bathbomb workshop bookings available.

✉ budsnblossomsnz@gmail.com

📍 @Sapofy

Emporium Kitchen

Small pop-up bakery run by Eva Woodhouse under the watchful eye of her chef/baker father. Christmas special: combo frozen pastries, glaze, and instructions delivered to your home by the 23rd. Also, donuts!! Get in fast! Order through Facebook:

📍 @EmporiumKitchen



Blacks Road Grocer

Locally sourced homewares aplenty: cutlery, kitchen utensils, pottery, ceramics, books, drinkware, tea towels & washcloths, and much more! Also food gifts galore: honey, preserves, sauces, seasoning, coffee, licorice, gourmet chocolate, etc. Gift boxes made to order. Gift vouchers available.

178 North Road, NEV

📍 @Blacks-Road-Grocer



Dunedin Botanic Garden Shop

Local source for high quality kiwiana giftware: reusable bamboo travel mugs, eco-felt grow-bags, retro enamel mugs, calendars and prints, ornaments, a variety of beeswax products, rimu carvings, books, aprons, jewellery, native seedlings & indoor plants, and the list goes on and on!

Info Centre, Great King Street, North Dunedin

📍 @dnbotanicgarden

Feather & Fern

Local photographer, Helen McCabe, offers a range of products featuring birds -- her speciality. Captures available as decal dots, cushion covers, calendars, greetings cards, framed prints, and more.

Gallery: <https://500px.com/p/featherandfernz>

✉ featherandfernz@gmail.com

📍 @FeatherandFernz



How about a topped-up Bee bus card?

beecard.co.nz

No need to head into town.
Everything you could need is right here...



A Neuron Scooter Pass is a smart gift idea! Options for 1/3/7/30-day pre-paid passes.

rideneuron.com/cities-dunedin/

Curly & Co

Headlining handmade soap business run by a mother and daughter duo has dozens of divine 'flavors' sold at Bloomin' Gorgeous, the Botanic Garden shop, and local markets. Customers can also order directly through Facebook. Just introduced: goat's milk & palm-oil free varieties! **f @curly_andco**



Orphans Aid Opshop

Selling thrift goods as well as 'new' ethically-sourced, branded products such as Imuka Coffee, Bennetto chocolate, felt slippers, reusable canvas bags, Trade Aid teas, knitwear, scarves, and more. Operated by Orphans Aid International Charity to raise funds for worldwide orphanages & health services.

21 North Road, NEV
f @OrphansAidOpshopNthDunedin
Shop online: orphansaidonline.com



Antidote Gardens

At least half of what's on the sales floor is giftable! There's something for everyone, from beeswax food wraps, plush animals, novelty beauty products, bath kits, supplement packs, jewellery, hair accessories, fragrances, classy candles/diffusers, and even cocktail mixers!

Gardens Shopping Mall, 1 North Rd.

Valley Project

We've got a few things worth wrapping! Might someone you know enjoy funky fabric cat collars, or a PekaPeka birdfeeder kit? Perhaps a book about the history of North East Valley, or a Scoopy window condensation squeegee? Come see us Tues-Fri before Dec. 17th.

262 North Road, NEV
03 473 8614



Crown and Feathers

High-quality linen tea towels, merino scarves & fingerless gloves designed and hand-printed by local Kate Watts. Drop into the mini-shop or buy online.

201 North Road, NEV
f crownandfeathers@gmail.com
Shop online: crownandfeathers.co.nz

The Naughty Baker

Certified baker of indulgent delights such as the popular "Chocalypse" cheesecake brownies, "Burn the Hell Out of It" basque cheesecake, and "My Darkest Desire" ultra-chocolatey cake. Whoopie pies, fruitcakes, & biscuits are on the menu, too!

Email pat.duffy22@outlook.co.nz for menu
(03) 473-0159



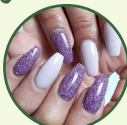
What adult doesn't enjoy a scratchy now and then?



Gift Voucher Suppliers



Adjo Cafe & Gallery



The Nail Shop



Pardal Hair Studio



Beam Me Up Bagels



Indian Spice Restaurant



Filadelfios Pizza



Croque-o-dile Cafe

Residence on Blacks Rd.

A plethora of interior plants and unique hand-crafted ceramics to choose from. Wild Dispensary gift packs are ready to go. Perfumes in-store, too! Gift vouchers available.

6 Blacks Road, NEV
f @residenceonblacksrd
e residenceonblacksroad@gmail.com



Bloomin' Gorgeous

It doesn't get better than this when gift shopping in the Valley. You'll find an abundance of homewares, decorations, and bath & beauty supplies, as well as cheeky clothing accessories, upmarket children's playthings, gourmet teas, houseplants, artificial plants, dried flowers ...too many options to list here! Can't decide? Grab a gift voucher.

19 North Road, NEV
bloominggorgeous.co.nz
f @BloominGorgeous2017

art, craft & music

ART CLASSES

For all levels. Casual attendance welcome, tutor Anneloes Douglas, community rooms, 10am–noon, Thur. ☎ 027 307 7034 ☎ 467 9993
✉ anneloes.douglas@xtra.co.nz

ART CLASSES

Continuous class, newcomers welcome, 1–3pm, Wed, community rooms; 1–3pm, Thurs, St Peter's Church Hall, Caversham; 7–9pm, Thurs, Logan Park High School, \$15 per session. ☎ Friederike 482 2025

ART FIBRE DUNEDIN

Bring lunch and requirements, 10am–3pm, second Sun each month, community rooms, ☎ Viv 473 0343
☎ artfibredunedin.blogspot.com

DUNEDIN FIDDLE CLUB

Mostly Celtic tunes, mostly fiddles. New players always welcome! Wednesdays 7:30pm at The Valley Project community rooms. Just drop in or ✉ anna.bowen1@gmail.com

KNITTING SQUAD

BYO knitting or crocheting, or come & learn, Valley Project community rooms, 1pm–3pm, Wed.
☎ Marjory 473 7751

LEARN TROMBONE

From winner of Dunedin Youth Jazz Festival best trombone, and Otago Rockquest best musician - contact Finnbar ☎ 027 356 2881 or ✉ fin.mckinlay@gmail.com

MUSIC LESSONS

Celtic style flute, tin whistle, and guitar lessons by Rennie Pearson.
✉ rennie.pearson@gmail.com
☎ renniepearsonmusic.com

MUSIC LESSONS

Guitar, drums, singing, with professional musician. All ages. Contact Bevan: ☎ 027 363 1376 or ✉ bevan37@hotmail.com

SOUNDS NOR'EASTERLY

Do you enjoy singing with a group? Why not join your local community choir? All ages and abilities welcome. DNI design lobby every Tues, 7.30–8.45pm. Email Marion for info
✉ marion.okane68@gmail.com

STAND-UP COMEDY

Open mic at Inch Bar, 1st and last Wed. Comedy workshop Mondays 5–7pm at George St McDonalds. Open to all skill levels. Contact
✉ reuben@dunedincomedy.co.nz

UKULELE SESSIONS

Wed, 7–8.30pm, Valley Baptist Community Center, 280 North Rd. Just turn up or text Adrienne
☎ 027 389 2574 for more info.

WOMEN'S ART GROUP

Art & craft group aimed at helping

new Dunedin residents learn & share skills & connect with others. Fri 11.30–1pm, Valley Project community rooms, 262 North Rd.

community

BIBLE HOUR

Friendly small group Bible learning over morning tea, Sun, 9.30am, DNI (tech area) during school terms. All welcome, free. ☎ 020 4079 5727 or ☎ dunedinchristadelphians.org

BIKE WORKSHOP

Get help, use our workshop. Bikes available for koha, 3.30–6pm Tues, and 9.30am–12.30pm Sat. Valley Community Workspace, 11 Allen St. Email Peter ✉ peterd0n@yahoo.com

COMMUNITY ACCOUNTING

Dunedin Community Accounting provides free accounting training & advice for non-profits in Otago. For more info call ☎ 0800 113 160, ✉ kiaora@dca.org.nz ☎ www.dca.org.nz

COMMUNITY PATROL

Dunedin North Community Patrol. Assisting Police to ensure our communities are safe to live in. Volunteers welcome. Call Garry for more info: ☎ 027 364 1485

COMMUNITY STUDY CIRCLE

Baha'i Spiritual Training. Develop your capacity to offer service to your community as a result of exploring spiritual concepts and how to apply them to everyday life. Strictly no charge. Ring or text Ash: ☎ 022 615 6115

DALMORE RESERVE COMMUNITY GARDEN

Come join us fortnightly at the garden on Allenby Ave., Pinehill. All welcome and tools provided. Check our Facebook page to see dates and times over summer, or contact us at ✉ dalmorecommunitygarden@gmail.com

DUNEDIN MAKERSPACE

Work on project, watch others and chat, 1pm–5pm, Sat; organised talks, 7pm, Thur, Valley Community Workspace, 11 Allen Street.

DUNEDIN REFUGEE & MULTICULTURAL WOMEN'S GROUP

Dunedin Refugee Centre, meet at the community rooms, 262 North Rd, 9.30–11.30am, Fri. ☎ Afife 473 8944

ENABLING LOVE

Looking for friendship & social connection? 18–65 years welcome to weekly coffee group at Otago Museum cafe, Thurs, 1–2pm. More at ☎ enablinglove.nz or email Joshua for venue: ✉ enquiries@enablinglove.nz

FRUIT & VEGES NFP

Fresh fruit and veges at wholesale prices with All Saints Fruit and Veges.

Small, med, family weekly bags. Order at St Martins, 194 North Rd, Thur, 4.30pm, or sign up online: ☎ fruit.vege.allsaintsdsn.org.nz

LEGAL ADVICE

Free legal advice at Community Law Otago, available by apntmt. Legal advice by qualified lawyers, practical solutions. ☎ 474 1922 or email ✉ reception@dcl.org.nz

MEN'S PROBUS

NEV bowling club, 10am, 2nd Mon ea. month, new members welcome. ☎ Peter 455 1256, ✉ peabee@xtra.co.nz or ☎ Don 473 7544

NEED A JP?

The Valley Project have a JP service every Saturday from 11am - 1pm.

NEIGHBOURHOOD SUPPORT

Create safer, more caring communities. For info and local contacts ☎ Davis 456 0857 or ☎ 027 476 6047 or email: ✉ coordinator@nsotago.org

NORTH DUNEDIN SHED

New members welcome. Open Wed and Sat mornings, 35 Bonnington St. overbridge. Find us on Facebook North Dunedin Shed Society Inc.

NORTH EAST VALLEY COMMUNITY GARDEN

NEV Community Garden is directly behind NEV school. Pay us a visit! We meet every weekend: 1st & 2nd Sat. 9.30–12pm. 2nd & 4th Sun. 1–4pm.

VOLUNTEERS NEEDED

CREST train at the Botanic Garden. Can you help? Volunteers needed for driving, ticketing, commentary, maintenance. ☎ cresttides.org.nz or ☎ Rodger 027 471 4902

WILD DALMORE RESERVE

Help us protect and restore the native biodiversity of Dalmore Reserve. We meet most Sunday afternoons. Entrance at 20 Allenby Ave, Pine Hill. Contact us through Facebook Wild Dalmore Reserve or phone/text ☎ 021 206 3593 for info.

employment

WORKBRIDGE

A FREE specialised service assisting work-ready people with any health conditions/learning difficulties/injuries to find suitable employment. All aspects of vocational prep provided – CV's, cover letters, job search, interview skills, placement. Once employed, support continued 12 months more. ☎ 0508 858 858 or visit ☎ workbridge.co.nz

fitness & health

BELLEKNOWES GOLF CLUB

Green fees \$15. \$10/player after 4pm. Come & enjoy our fantastic 9-hole golf course on Lawson St. Spectacular views over the city. ☎ Secretary, Christina King, 467 9499

DUNEDIN BMX CLUB

Race night, Forrester Park BMX track, 5:30pm, Thur.

FOLK DANCING FOR FUN

Valley Baptist Community Center, 270 North Rd, 10am–11.30am, Fri, \$4. ☎ Yvonne 455 2406, ✉ stureid1@yahoo.co.nz

INDOOR BOWLS

Play indoor bowls at the NEV Bowling Club, 139 North Rd, Thurs, 1.30pm start. ☎ Terry Boylan 473 0049

KIND LIVING

Relaxing massages for mind and body, aware yoga and self-leadership coaching. Valley dwellers and friends are invited to ask for a special discount on their first massage. Visit ☎ kindliving.co.nz or contact ☎ Uschi 027 360 0238

KUNG FU

Fitness, discipline and self defence. Classes for 7–12 years Wed, 5–6pm, Sun, 3–4pm, teen & adult classes, Wed, 6–7.30pm, Sun, 4–5.30pm, Nga Maara hall. Contact Kenneth ✉ Dunedin@shaolinkungfu.co.nz or ☎ 022 094 6357

ORTHO-BIONOMY

In pain or discomfort? Had surgery or injuries? Ortho-Bionomy is a gentle way to help you in the process of maintaining your balance or accessing your resources during your recovery! For more info and bookings visit ☎ juliafast.nz

PARKRUN

A free, weekly timed 5km run/walk, Sat, Botanic Gardens. Meet at café, 8am summer, 9am winter. Go to ☎ parkrun.co.nz for more info.

STEADY AS YOU GO

(Age Concern) Gentle balance and strength exercises, Valley Baptist Community Centre, 10.30am–11.30am, Mon, and Pine Hill School Library, 11am, Thur.

TANNOCK GLEN

The 3.5acre garden of the Dunedin Rhododendron Group is situated in Torridon St, Opoho. Members of the public are invited to visit at any time. Dogs permitted on a lead.

THREE LEFT FEET

Social dance group, no experience or partners necessary. European dance – folk and traditional, \$5 or \$7.50 per couple, Nga Maara hall, 6–7pm, Thur. ☎ Marilyn 0274 463 358

YOGA IN THE VALLEY

Instructor Adair Bruce, 6–7pm, Mon & Fri, DNI designspace; 9.15–10.15am, Mon & Wed, community rooms. \$10 waged, \$8 unwaged. More info ✉ adairbruce@hotmail.com

ZEN MEDITATION

Traditional Zen for beginners and experienced people. All welcome. 7pm Thur. at the Quaker Rooms, 15 Park Street, Dunedin North. Koha please. 6wk beginners courses through the year. 7-day retreat on

Quarantine Island annually. Any questions phone 📞 Glenn 473 6256

for families, kids, and teens

DUNEDIN CITY TOY LIBRARY

A vibrant toy library for children from birth to 7 yrs. Huge range of toys, ride-ons, dress-ups, puzzles, games. Valley Baptist Community Centre, 270 North Rd, 3.30-4pm Wed, and 10-11.30am Sat.

MAINLY MUSIC

Leith Valley Church, Malvern St, Wednesday 10am, \$4. Contact: Fran 📞 467 9208 (Leith Valley Church Phone No) or 📠 027 456 1188

MT CARGILL GIRLGUIDES

Pippins, brownies, guides, & ranger groups in the valley. 📠 0800 222 292 or 📧 info@girlguidingnz.org.nz

NEV PLAYGROUP

For 0-5yrs, variety of experiences to enhance development of your child and meet other local young families. Free morning tea and lunch provided for adults. Please supply child's morning tea. Valley Baptist Community Centre, 270 North Rd, 9am-12pm Tue & Wed. 📧 nevplaygroup@gmail.com

OPOHO PLAYCENTRE

A nurturing play space for 0-6 yr-olds where children and their whanau attend together. Focus is on child-led learning through play. Come make friends, play, learn, and grow. Three free visits. 28A Signal Hill Road. Mon-Fri 9am-12pm following school term times. Find us on Facebook, contact us at 📧 opoho@playcentre.org.nz, or 📠 027 880 2365

OPOHO SCOUTS

Keas, 4pm-5pm, Tues; Cubs, 6pm-7.30pm, Thur; Scouts, 6.30pm-8.30pm, Wed. Opoho Scout Den. 📧 Shane: opoho@group.scouts.nz

PRESCHOOL MUSIC

At Opoho School, 9am-9.30am, Fri, during school term. Room #3. Gold coin. Drop in. 📞 473 8019

RUDOLF STEINER

Te Whare Ako Marie, Pinehill & Maia. A sanctuary for creative play for children from birth to kindergarten. A place of peace and friendship for parents. Groups meet weekly, term time. 📞 471 2163 or 📧 dunedinsteinerplaygroup@gmail.com

SPACE FOR YOU AND YOUR BABY

Programs run by registered ECE teachers supporting families through their first year with a new baby. School terms, 12.30-2.30pm, day TBC, Valley Baptist Community Centre. 📠 021 150 9165 or 📧 space.valleybaptist@gmail.com

SUNDAY SCHOOL

Variety of classes with stories, crafts, songs, and more. Ages 4-18yrs, 9.30am Sun (term time only), DNI

(tech area). All welcome! No charge. 📠 020 4079 5727 or go to dunedinchristadelphians.org

further education

CITIZENS ADVICE

Dunedin Citizens Advice Bureau - a free confidential service for all. We can help with tenancy problems, employment issues, consumer problems & host of other issues. Rodgers House, 155 Princes St, 📞 471 6166 📧 cab.org.nz

COM2TECH

A community-led group that offers a range of free classes to upskill our communities in communications technology and online safety. 📧 office@com2.tech 📠 com2.tech 📧 @com2tech (See page #14)

INSPIRING MATHS CLASSES

Affordable creative maths classes and maths art after school at my home in North East Valley. 📧 Inspiring Maths Classes. 📧 Sandra.Dunedin@gmail.com

ITALIAN CLASSES

Experienced teacher, native speaker of Italian. Small groups, all levels, from absolute beginners to advanced and conversation 📠 027 341 8312, 📞 473 0832 📧 antonella.vecchiato@gmail.com 📠 italianclasses.co.nz

LEARN ENGLISH

English for daily life and work. Free and low cost courses. Contact Tamara or Felicity at English Language Partners 📞 455 5266 📧 dunedin@englishlanguage.org.nz

LEARN GERMAN

Would you like to learn German? I'm a French private teacher who speaks fluent German! Contact me at 📧 emilie.grenon@laposte.net

NATIVE FRENCH TEACHER

📠 Emilie Lilley 021 256 5785 or 📧 emilie.grenon@laposte.net

NATIVE FRENCH TUTOR

Conversation, preparation for exams, for adults and children. Hourly rate. 📠 Sandrine 021 107 5814 or 📧 sanfeillet@gmail.com French Up Your Life!

SPANISH LESSONS

Learn Spanish in a fast and fun way. All levels and wide time availability. 📠 Luana 027 284 7836 or 📧 luana.suarez26@gmail.com

housing

HOUSE SHARE PINE HILL

Furnished house share, Liberton. 3 min. from bus stop. Pinehill. Usually appreciated by PhD student due to peaceful setting. \$112. Religious people welcome. 📠 Anne 022 480 0676

HOUSE SITTER WANTED

Nice big house on sunny side of NEV. Lovely garden. Would involve looking after 2 fairly easy dogs, rabbits, and

fish. All animal expenses will be covered. Mid-December to approx. mid-March. 📠 022 049 8174

SEEKING SLEEPOUT

I'm looking for a sleepout in North East Valley. If there's anything available please contact me: 📠 021 086 22 922

trading corner

BABYSITTER

10 years of childcare experience. Full drivers licence. Have worked with twins. 📠 Kelly 027 697 9194

BABYSITTER

High school student available for babysitting evenings and weekends. 📠 Laura 027 905 9911 after 4pm

BABYSITTER IN NEV

Children of all ages. Experienced 26-year-old. Wide hourly availability. 📠 Luana 027 284 7836 or email 📧 luana.suarez62@gmail.com

CAKE BAKER

Home-baked cakes large/small for your pleasure. Made to order. Price list available. 📞 473 0159 (evenings)

COMPUTERS

I fix computers! Low rates, great service, Windows, Linux, Mac, Android. 📠 Matt 022 048 0012

GARDENER

Gardener available, light weeding/trimming, winter rose pruning. Very experienced, \$30/hr, 📞 473 0159 (evenings)

GARDENER/CLEANER/HOMEHELP

I offer general household cleaning, assistance, weeding and trimming at \$30 an hour. I use my own cleaning products/gardening tools. 📠 Hannah 027 713 3094

GARDENER/LANDSCAPER

📠 Backblokgardens.nz. Section clearing, tree pruning/shaping, planting, custom planters, retaining walls. 📠 021 023 44 938

HAIRDRESSER

Retired senior hairdresser providing service for seniors. Your home or mine. Dunedin North only, 📞 Helen 467 9644 or 📠 021 104 1011

LABORER NEEDED

Couple needing 4-5 days labor in exchange for original artwork of choice. Choose from 📠 rodeales.wordpress.com. Property in Upper Junction. Lunches provided. 📞 Rod 473 6452

SEA BLOOM

A local business specialising in custom resin accessories and home decor - the perfect treat for yourself or a gift for a loved one. Find Sea Bloom on Facebook or Instagram, or here: 📠 seabloomnz.company.site

VENUS FLY TRAPS

Large caliber plants. Five times as big as those sold by the shops and are \$4.00 cheaper. Growing instructions

included. \$10. 📞 Pat 473-0159 (PM)

church services

SALVATION ARMY

43 North Rd, community worker only, Mark O'Donnell

SACRED HEART CATHOLIC

89 North Rd, Mass 9.30am

GLENAVEN METHODIST

7 Chambers St, 11am

PACIFIC ISLAND PRESBYTERIAN

160 North Rd. English, 11am on 1st, 2nd, and 3rd Sundays; Cook Island 9.30am; Samoan 11am, 4th and 5th Sundays

ANGLICAN: ST MARTIN'S

194 North Rd, 10.30am

ST THOMAS'

Raleigh St and Pine Hill Rd, children & family service, 4.30pm, 3rd Sunday

OPOHO PRESBYTERIAN

50 Signal Hill Rd, 10am

NEV PRESBYTERIAN

Community rooms, 9.30am, 11st, 3rd, and 4th Sundays, cafe service, contact Shona McDonald: 📞 453 0145

ST MARK'S PRESBYTERIAN

304 Pine Hill Rd, 10am



Why not try posting to The Valley Exchange Facebook Group?

INTERESTED IN ADVERTISING WITH CLASSIFIEDS?



To add or update a listing please email voice@northeastvalley.org before the 20th of the month.

Koha is appreciated, but not essential, for classifieds.

If you would like to make a donation, the Valley Project bank account number is **03-1726-0005606-000** Reference: **VVDonation**

ANOTHER MILESTONE FOR CPNZ

Since forming in 2005 and becoming operational, Dunedin North Community Patrol volunteers have clocked up thousands of kilometres and volunteered thousands of hours carrying out twice-weekly patrols in Northern Dunedin; Forsyth Barr, Mornington, North East Valley, and Opoho to name a few.

Police regard patrols as a valuable asset acting as 'extra eyes and ears', available to be mobile in risk areas as an effective tool in the deterrence of criminal activity. Good, local knowledge means patrols are a useful resource with the ability to combine with police and other community services to ensure our neighbourhoods are safe places to live in.

Patrol tasks as requested by police may include gathering information through note-taking, recording signs of suspicious activity, watching out for stolen vehicles/property and missing/wanted persons, and assisting at accidents, crime scenes, and fires. They may also assist at community events for crowd control and monitoring of parking sites. Patrols are carried out in residential, business, and industrial areas to identify or deter likely criminal activity. There are regular security checks of schools, DNI and NEVNS included, as well as churches, community gardens, and parks.

The campus and student activity is part of our brief as we work alongside Campus Watch to ensure our students are not acting up too much, looking at the safety aspect of some of their activities. It's about discouraging unsafe behaviour. In a number of instances, some of us older women find it works to approach them with 'what would your mother say about this', resulting in replies of 'OK Grandma'; some notice taken for the better! The North Dunedin area is so quiet when they all leave at the end of the year!

It's always good to spot a wanted driver and or vehicle, follow up, and have it called in on the radio to ensure a catch!

In looking back over the last 15 years, we have always had great support from our local Police Liaison Officers, Trust Power who

donated our first two patrol vehicles, AMI who have sponsored vehicle insurance, Hall Bros Transport for fuel support, local business, and of course the volunteers who willingly turn up to do their turn. Last year we funded our own vehicle thanks to generous Trusts and Emma Gilmour. Part of our on-board equipment now is an AED Unit for which volunteers have completed first aid certification to use. They're happy to take on various roles in the running of our Trust.



Quite often we have a younger volunteer who wishes to join the police. As a starting point, community patrol gives some worthwhile insight into the job while awaiting acceptance. This means we often need a replacement and why we now are looking for new volunteers to join us. CPNZ works closely with NZ Police through a Memorandum of Understanding which enables patrols to receive regular police guidance, training, and tasks.

For anyone interested in how our nights on patrol go, we offer to take prospective volunteers out with us as observers. Friday and Saturday are our usual nights out from 9pm until 1 or 2am. If you want to make a difference in your community please give Garry Cranfield a call: 027 364 1485. -- Marie Sutherland



media
REVIEW

FANTASTIC SERIES FOR VALLEY FANTASY FIENDS

"The Wheel of Time turns, and Ages come and pass, leaving memories that become legend. Legend fades to myth, and even myth is long forgotten when the Age that gave it birth comes again."

This is the iconic line that begins each entry of the late Robert Jordan's massively epic fantasy book series that commenced with *The Eye Of The World* in 1990. How fitting that a generation later, this sprawling, genre-defying tale is being reborn on Amazon Prime.

Drawing heavily on elements from Eastern mythologies such as Hinduism and Taoism, the *Wheel of Time* deeply explores the cyclical concepts of time and rebirth, oneness with nature, and the tensions of balance and duality. Couple this with your favourite fantasy tropes of monsters and magic, prophecies and monarchs, and you have a philosophically tantalizing story that will hook your emotions with the characters, the vibrant world, and the looming existential threat you'd expect from a Dark Lord.

There's not enough space here to praise the mighty work from Oscar-nominated Rosamund Pike as lead character, Moiraine Damodred. This Gandalf-equivalent who whisks away the innocent village protagonists brings a gravitas to the dynamic that is sure to launch the *Wheel of Time* to a global phenomenon. How they'll adapt FIFTEEN BOOKS into a TV show is a journey I'm immensely excited to watch unfold.

There is no doubt this story will have something wonderful to offer everybody - whether you're a hardcore fantasy fan or just enjoy some top quality television. The unbridled sense of adventure, the themes of spiritual growth, and soul-stirring emotional swells are all things I'm certain will resonate with our Valley Sci-fi fans.

Join the epic quest available now on Amazon Prime; binge the first four episodes then catch up each Friday until Christmas Eve.

This TV adaptation was not the beginning. There are neither beginnings nor endings to the *Wheel of Time*. But it was a beginning. -- Nathan Laurie



WEKA & SYNERGY WELLNESS PARTNER-UP FOR POP-UP PEER SUPPORT

The peer support café is an informal and welcoming space people can come whether they are experiencing distress, or are just looking for a way to positively support their wellbeing. We work with the philosophy that if someone is asking for help we give it to them, ranging from a cuppa and a chat to facilitating access to clinical crisis intervention. The Valley Baptist Community Centre is transformed every Monday to create several separate spaces for lounging, drinking coffee or sharing kai, with options for various arts, crafts, and games, chatting in a group, having some quiet time alone or with a peer support worker, or sensory modulation.

Since the inaugural pop-up in Kaikorai Valley during mental health awareness week, there have been about 70 people visit the café, and many have become regular attendees. People have said they like the non-clinical environment where they feel comfortable opening up, and feel heard and connected.

Everyone who works at the café has had their own wellbeing challenges and is passionate about using that experience to help someone else. The peer support model is backed by a strong evidence-base, and is fundamental to improving wellbeing and resilience in individuals, whanau, and communities. As people learn ways to manage their own wellbeing, they pass on ideas to others.

The original Pop-up café continues every Wednesday 1-8pm at Kaikorai Valley, and we are excited to now be operating from North East Valley on Mondays 1-5.30pm. Our vision for 2022 is to extend our opening times, however this will be based on financial feasibility. -- *Cafe Team*



SUPPORT IS A TWO-WAY STREET

Based in Dunedin, Weka Charitable trust offers wellbeing education and crisis support. We specialize in anxiety, depression, and mental health first-aid using a hybrid peer support and clinical model. Support sessions include subjects of relapsing, alcoholism, drug addiction, triggers, and carer fatigue, to name a few. Additionally we do strengths-based assessment to support well-being.

WEKA is actively seeking financial support and corporate sponsorship for these much-needed services of education, recovery support, relapse planning, crisis drop-in centres, and more.

📍 WEKA - Wellness, Empathy, Kindness Aotearoa | 🌐 www.wekanewzealand.org



FABRIC ACCEPTED IN ARMFULS!

De-cluttering your cupboards? Clearing out a relative's textile stashes? Upgrading curtains or bed linens? Do your scarves need retiring, perhaps? Or tablecloths that no longer suit your suite? We'll take ALL of your fabric giveaways! And we'll even come to YOU for collection. It doesn't get easier than that to Marie-Kondo your life while enriching another's. Simply text **021 102 6854** to organize a pick-up time.

The Threading Whare Charitable Trust provides a safe crafting workspace for ethnic women who have a craft skill but lack space, equipment, and materials to create. It is designed to support social integration and encourage growth in conversational English. Open Monday, Friday, and Saturday from 10am - 4pm & Thursday from 10am - 1pm (note: closed over holidays Dec. 22 - Jan. 7)

.....
VALLEY BAPTIST COMMUNITY CENTRE, 270 NORTH ROAD, NORTH EAST VALLEY



270 NORTH ROAD, NORTH EAST VALLEY

DUNEDIN CITY TOY LIBRARY

Exciting new toys for older children are on their way!

@DunedinCityToyLibrary
dunedincitytoylibrary.co.nz

Note: holiday closure from 18 Dec, reopening 22 Jan.



COM2TECH

THE COMMUNITY COMMUNICATIONS TECHNOLOGY TRUST

Com2Tech offers a range of classes to up-skill our communities in communications technology & online safety, and provides opportunities for kids to use their gaming skills to support their community.

AMY SOUQUET: 027 256 9182

AMY@COM2.TECH

FACEBOOK: @COM2TECH

Note: holiday closure 20 December to 23 January 2022

🔌 DIGITECH DROP-IN (FREE)

Valley Project, Wednesdays 10.30am - 12.30pm

Valley Baptist Community Centre-Tech Space, Wednesdays 3.30pm - 5pm

Learn basics of using your tech apps and programs. Bring your own device, learn ways to use your tech together more efficiently. Utilizes 'Stepping Up' programme modules. Choose topics to match your needs: www.steppingup.nz. Supported by IT experienced and trained volunteers.

🎮 NORTH GAME DEV CLUB

Valley Baptist Community Centre-Tech Space Tuesdays 3.30 - 5pm

Intermediate-age tamariki. 8wk program to build your own game. Run by three IT-trained tutors. Supported by CODE (Centre of Digital Excellence) and local game devs. Bookings essential: gamedev@com2.tech

</> TECHTIME (FREE CLASSES)

Valley Project, Wednesdays 3.30 - 5.30pm

Primary ages 7+. Work on tutorials for Scratch, Python, & Html. Supported by IT-trained volunteers.

trade directory whaiaronga tauhokohoko

DALE WILKINSON BUILDER

Local, loyal and licensed builder practitioner at your service.

No job to big or small, quotes available.

Please call
021 867 896

New Builds, Renovations, Alterations Maintenance & Farm Buildings



EDWARDWHITE BUILDERS

for more information contact:

p: 021 0718 665
or 03 482 2729

e: edwardwhitebuilders@gmail.com

EVolution

Electric car charging systems
Electric Car conversion and parts
Off grid Solar design build
Custom Lithium battery manufacture

03 395 6565
ev-lution.co.nz



Peter Waymouth Consulting Arborist

www.greentrees.co.nz

Fine pruning of trees large & small

473 8065
027 432 9646

AROUND-TUIT handyman services

Get jobs done which have been hanging around because you haven't got time.

DIY jobs garden clearance/tidying

VERY REASONABLE RATES
References available

Why wait any longer?

022 472 4988

aroundtuit17@gmail.com

NEV LAWNS & GARDENS

Lawns, Edges, and Hedges.
Weeds - whacked, sprayed, or pulled.
General Garden Tidy-ups
Green Waste Removal

Contact Steve O'Connor:
Phone or text: 027 424 1828
Email: emailsteve@xtra.co.nz

CONTROL FOCUS

COMMERCIAL & INDUSTRIAL ELECTRICIANS

Instrumentation
Automation
Safety Upgrades

controlfocus.co.nz

03.395.6565

Plumb it!

DOMESTIC & INDUSTRIAL PLUMBING SERVICES



TIM BUSCALL
027 473 1650
ph/fax (03) 473 1650
Craftsman Plumber / Reg. Drainlayer



Tere Singh

18.12.1972 - 02.11.2021

TRIBUTE FOR TERE SINGH OF INDIAN SPICE NORTH DUNEDIN

Earlier last month we lost an outstanding North East Valley figure. Mr. Sahib Singh's wife, Tere Singh, suddenly passed away due to unspecified illness.

Mr. Singh tells us Tere lead an incredible life. Here in the Valley we know well that she was an active community member, always up for a friendly chat, and was well-known and respected as owner and manager of the popular North Dunedin Indian Spice restaurant.

Tere was born in the Cook Islands. Her mum was a nurse and her father was a marathon runner who once competed alongside New Zealand middle-distance runner, Sir Peter George Snell.

Tere and Sahib established Indian Spice in 2003, their first restaurant in South Dunedin. Over the years the business grew to several restaurants. Tere preferred to manage the Valley location as her children went to school in the area.

In 2018 she became unwell and underwent a double amputation. With the help of her husband and the dedicated medical team, she recovered better than expected.

Tere loved being a part of the Valley community right up until the end. Her family would like to express gratitude for the outreach of love and support from everyone here. Her memory will surely live forever in the Valley's hearts.



SACRED HEART SCHOOL 125TH JUBILEE BOOK

The Sacred Heart Community in the Valley is pleased to announce the publication of the book to mark the 125th Jubilee that was celebrated at Labour Weekend back in 2020.

STORIES OF FAITH, FAMILY AND WHĀNAU IN THE VALLEY SACRED HEART SCHOOL, TE KURA O TE MANAWA TAPU ŌTEPOTI DUNEDIN 1895 - 2020

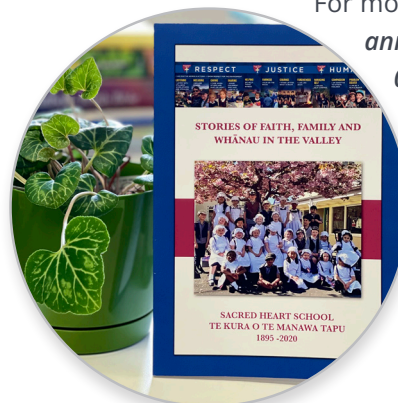
The book celebrates the history of the school founded by the Dominican Sisters. It spans three centuries from its beginnings in the church and the old school, until its life in a modern building today. There are memories recorded by pupils from 1905 through to the reflections of what life is like at Sacred Heart in the 21st century by the present day children.

The book would make a great Christmas present for people connected with Sacred Heart School. A browsing copy of the book is available at the North East Valley Community Rooms. Copies can be purchased at the School Office between 8:30 and 12:30 for \$25.

For more info:

anne.kennedy@xtra.co.nz

021 477 347



Bookcover photograph is of Sacred Heart children dressed as pupils at their school 100 years ago in celebration of the 125th Jubilee.

Photograph of book provided by the ODT.



SACRED HEART CATHOLIC CHURCH

As members of the Catholic Church we are taking part in a worldwide Synod, which Pope Francis has begun, to know how our communities are doing - what we are doing well and listen to what we need to change, so at the moment we are getting together in all the parishes, praying, discussing and thinking, and putting ideas forward in the diocese.

We would also like to hear from those outside the church so if you want to have your say you can by using one of the following options below:

Take part in the online survey:
www.surveymonkey.com/r/AotearoaSynod1

Email: swannstephann@gmail.com

Write to: **Catholic Diocese of Dunedin, Private Bag 1941, Dunedin 9054**

Speak to someone by appointment:
phone 027 655 6691

Take part in the Diocesan Synodal Meeting at Burns Lodge Mosgiel:
Saturday 11th December, 10am-2pm

To register and for more information go to website www.cdd.org.nz



Need an MP?

David Clark MP for Dunedin

If you require advocacy, information or support please contact me

Dunedin Office
 dunedin@parliament.govt.nz
 03 474 1973
 544 Great King Street,
 Dunedin
 /DavidClarkMP



Authorised by David Clark MP,
 Parliament Buildings, Wellington

Invest with confidence



Lyn Howe,
 Investment Adviser

lyn.howe@forsythbarr.co.nz
 (03) 477 7464 | forsythbarr.co.nz



**SUPPLE
 GROUNDING**
 yoga and more for the
 pelvis and its floor
**10am Mondays
 STUDIO TULA**



suzyfoxpersonal
 training.co.nz

GILLIONS
 FUNERAL SERVICES
We're here for you.
 100% locally owned and
 operated. Ask about our eco
 and pre-planning options.

455 2128
 407 Hillside Rd. Dunedin
 gillions.co.nz
 Funeral Directors
 ASSOCIATION OF NZ

Need a painter?



- inside or out
- no job too small
- waterblasting available

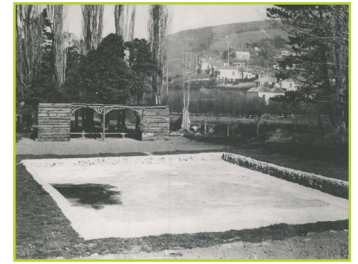
COMPETITIVE RATES & QUOTES
 Contact Bryan:
 473 7488 or 021 108 1860
 porteous.a.b@gmail.com

WHEELS IN MOTION FOR NEW TOY

Did you catch the news that a trial skateboard ramp is planned for North East Valley? It's part of the 3-year Play Spaces Plan managed by the DCC after extensive surveying of our communities. Here in our Northern pocket of Dunedin, it's already generally agreed we lack easy-access play areas and equipment catered to older primary children and teenagers. 77% of the ~900 Dunedinites surveyed want the DCC to spend more on this age group. From the same pool of results, the Council noted that "older primary school children want risk, challenge, and more free space (wheeled play)."

Speaking of pools, Project Manager, David Natta, has confirmed a trial skate ramp will be installed atop the concrete slab where the Chingford estate wading pool once functioned. It's scheduled for March or April of next year.

A total of three trial skateboard ramps are in the works as part of the 2022 Play Spaces Plan. The others will be homed at Marlow Park and on the Peninsula. All are a model SK01 half-pipe ramp designed by ARC - American Ramp Company, and supplied by Park—Life New Zealand. The SK01 provides flexibility to move and to add other features as budget permits. For those skateboard buffs, the dimensions of the ramps are H 1.2m X W 3.6m X L 9.1m.



Hocken Collections #9383



- | | |
|--|---|
| 1. FRAMEWORK: 3.2mm thick laser-cut steel | density Polyethylene |
| 4. ENCLOSURES: 2.3mm thick laser-cut sheet metal | 10. RIDING SURFACE: 6.35mm thick CNC machined high-density Phenolic |
| 9. SUBSTRATE B: 12.7mm thick CNC machined high- | |

For heaps more information, including Woodhaugh Gardens upgrades, pumptrack installations and playground renewals across the city, as well as regular updates during implementation of the DCC Play Spaces Plan, visit www.dunedin.govt.nz/play-space.

"Skateparks offer multiple benefits for the individual. They are a form of self-expression, are inexpensive, are challenging, can be social, and fun." Merry Christmas to us! And... ↴

Merry Christmas to YOU!
 the VALLEY project
 FROM EVERYONE AT

Tim McGuire
 LET'S MAKE IT HAPPEN

To book a free appraisal or for any other real estate questions
call Tim, now
027 562 7207
 hello@timmcguire.co.nz | timmcguire.co.nz

ONE AGENCY
 THE PROPERTY SPECIALISTS

LICENCED | REA 2008