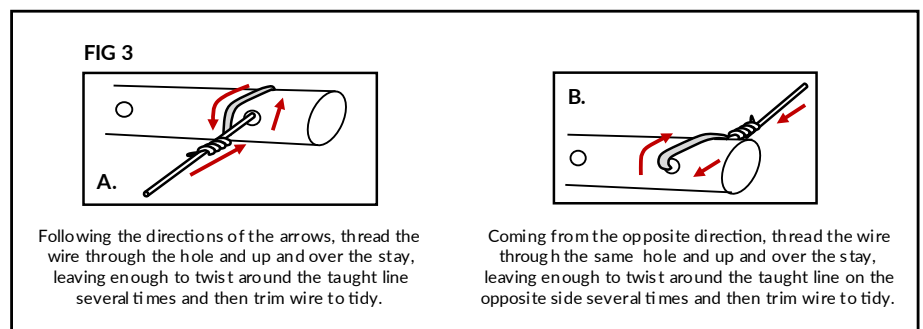
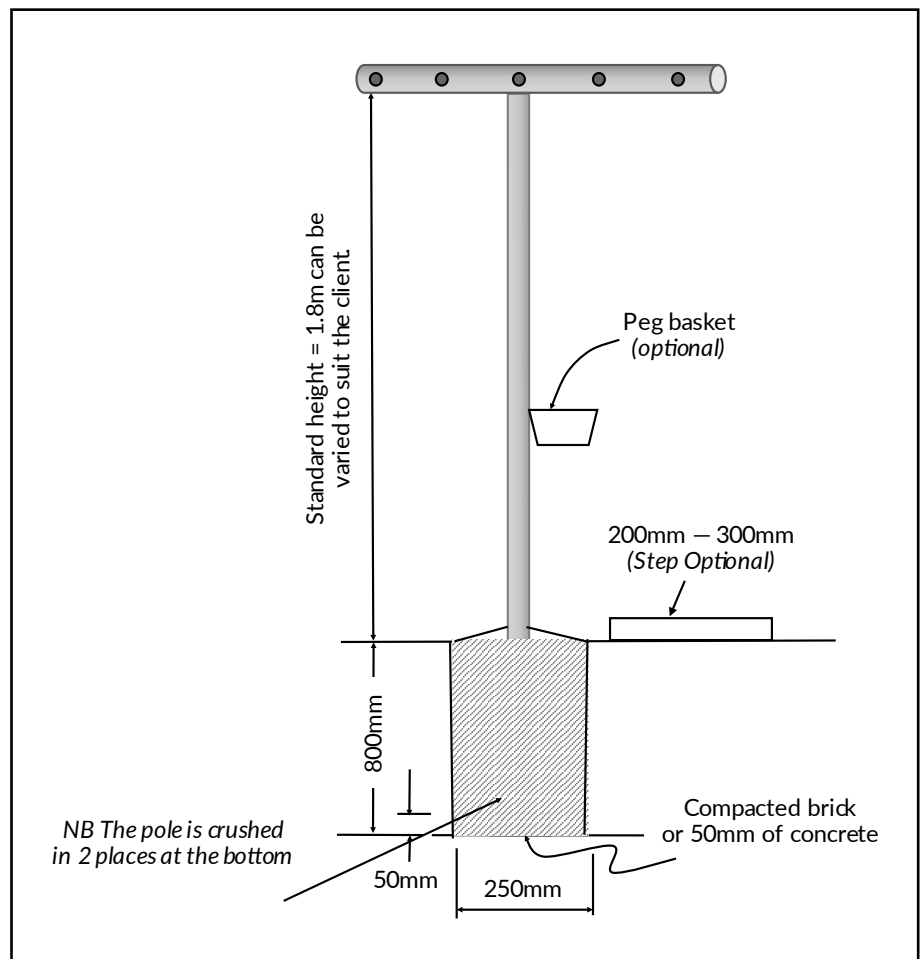


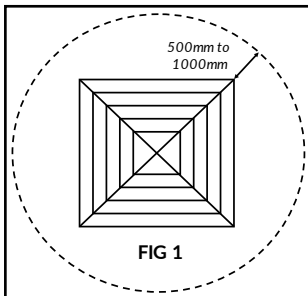
T POST CLOTHESLINES INSTALLATION

Qty	Part Name
1	T Post
1	30m Roll Wire

1. Select a suitable site. Always leave approximately 1.5m (5') clearance each side of the line and any wall / fence / shed etc. If your T Posts span is more than 6.5m, we recommend another middle post is used.
2. Dig a hole 250mm (10") diameter by 800mm deep.
3. Place 50mm dry concrete mix or gravel into hole and compact (or use a brick).
4. Place the pole (which is crushed in 2 places at the bottom) in the hole and check the height to suit (or ideally 1.8m). NB Taller people may choose to raise the 1.8m height to suit themselves.
5. Mix concrete in the following proportions: **3 GRAVEL, 2 SAND & 1 CEMENT** and a little water. The concrete should be damp enough to hold together when squeezed in the hand. Support the main standard and place concrete into position. Settle the concrete by pushing a thin stick into it several times. Float off the wet concrete, making sure it falls away from the pole for drainage. Make sure the wet concrete doesn't splash the rest of the pole.
6. Check post is vertical.
7. The top of the concrete should be 6mm (1/4") above the ground level. Refer installation diagram.
8. Allow at least 3 days for the concrete to set before wiring up. Keep the wire as tight as possible.
9. Place the clothesline wire around the arms through the holes. Direction is through the hole, out the back, up and over and then tie it off back onto itself. Tie all lines on one post first and then move onto the second post. Refer FIG 3 for wire direction.
10. **WARNING** - Do not allow children or pets to swing on the Clothesline or items of laundry. Do not use for any purpose other than to hang and dry washing. Do not use your Clothesline if parts are worn or damaged.

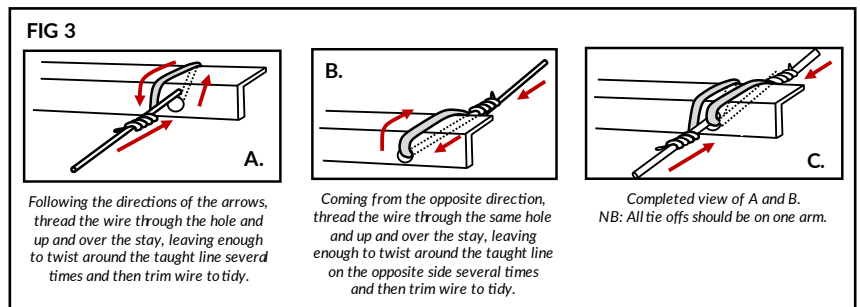
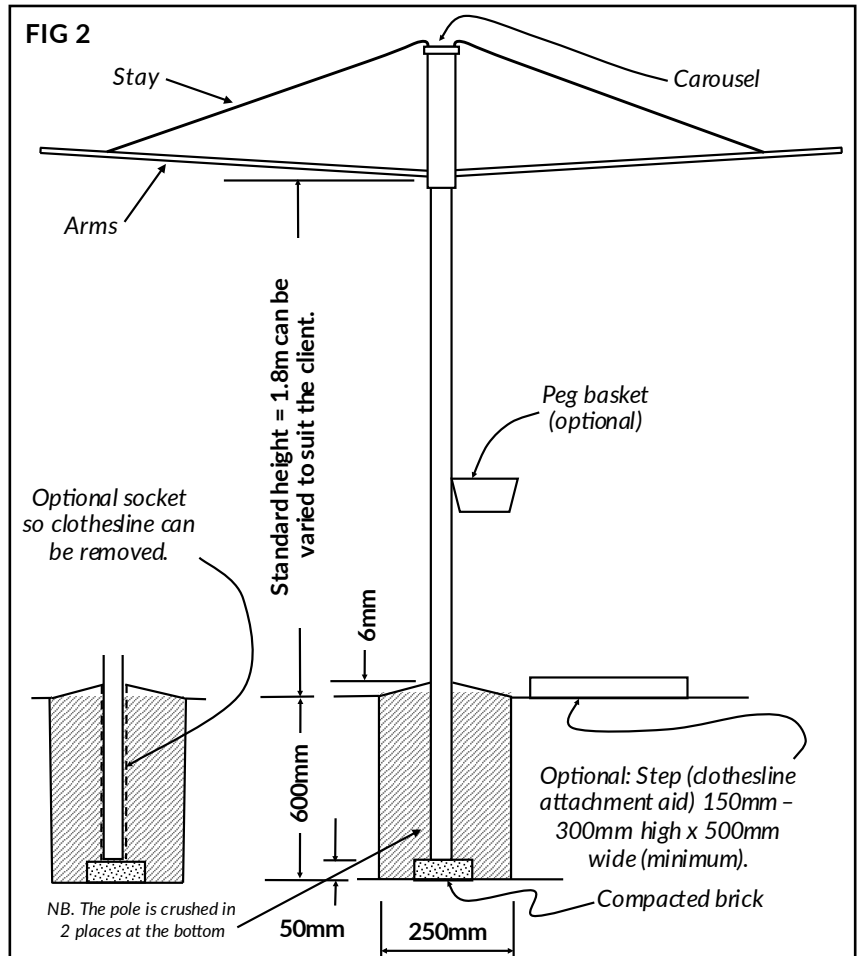


ROTARY CLOTHESLINES INSTALLATION



Qty	Part Name
1	Pole
1	Carousel
4	Arms
4	Stays
1	Roll Wire - F3
1+	Rolls Wire - F4
2	Rolls Wire - F5

- Select a suitable site.
Refer to FIG 1 for recommended clearances.
- Dig a hole 250mm (10") diameter by 600mm deep.
Refer to FIG 2.
- Place 50mm dry concrete mix or gravel into hole and compact (or use a brick).
- Locate the carousel on top of the pole and lock it into place. Place the pole (which is crushed in 2 places at the bottom) in the hole and check the height of the lugs on the carousel are 25mm (1") above the users head (or ideally 1.8m). Locate the 4 arms into the carousel lugs. Locate the stays into the arms and then carousel top (rounded hook to arm; vee hook to top of carousel). **NB** Taller people may choose to raise the 1.8m height to suit themselves.
- Place the clothesline wire around the arms - start off with the outer wire first and the full roll of wire, keep the short piece for the inside line (F4 model); and make sure you tie off the wire after each circuit on the same arm. Alternate the direction of wiring e.g first line clockwise, 2nd line anti clockwise. *Refer to FIG 3.*
- Mix concrete in the following proportions: **3 GRAVEL, 2 SAND & 1 CEMENT**. The concrete should be damp enough to hold together when squeezed in the hand. Support the pole and place concrete into position. Settle the concrete by pushing a thin stick into it several times. Float off the wet concrete, making sure it falls away from the pole for drainage. Make sure the wet concrete doesn't splash the rest of the pole.
- Check post is vertical.
- The top of the concrete should be 6mm (1/4") above the ground level. *Refer to installation diagram FIG 2.*
- Allow 3 days for the concrete to set before use.
- Handy hints - Commence hanging the washing on the inside line, starting with the smallest garments and work your way outwards. The wind brake assists in the pegging of clothes on a windy day. The rotating action of the clothesline gives natural spin drying of your washing.
- Warning - Do not allow children to swing on the clothesline or items of laundry. Do not use for any purpose other than to hang and dry washing. Do not use your clothesline if parts are worn or damaged.



HOCKEY STICK CLOTHESLINES INSTALLATION

Qty	Part Name
2	Posts
1	30m Roll Wire

1. Select a suitable site. Always leave approximately 1.5m (5') clearance each side of the line and any wall / fence / shed etc. If your post span is more than 5m, we recommend another middle post is used.
2. Dig a hole 250mm (10") diameter by 800mm deep.
3. Place 50mm dry concrete mix or gravel into hole and compact (or use a brick).
4. Place the pole (which is crushed in 2 places at the bottom) in the hole and check the height to suit (or ideally 1.8m). NB Taller people may choose to raise the 1.8m height to suit themselves.
5. Mix concrete in the following proportions: **3 GRAVEL, 2 SAND & 1 CEMENT** and a little water. The concrete should be damp enough to hold together when squeezed in the hand. Support the main standard and place concrete into position. Settle the concrete by pushing a thin stick into it several times. Float off the wet concrete, making sure it falls away from the pole for drainage. Make sure the wet concrete doesn't splash the rest of the pole.
6. Check post is vertical.
7. The top of the concrete should be 6mm (1/4") above the ground level. Refer installation diagram.
8. Allow at least 3 days for the concrete to set before wiring up. Keep the wire as tight as possible.
9. Place the clothesline wire around the arms through the holes. Direction is through the hole, out the back, up and over and then tie it off back onto itself. Tie all lines on one post first and then move onto the second post. Refer FIG 3 for wire direction.
10. **WARNING** - Do not allow children or pets to swing on the Clothesline or items of laundry. Do not use for any purpose other than to hang and dry washing. Do not use your Clothesline if parts are worn or damaged.

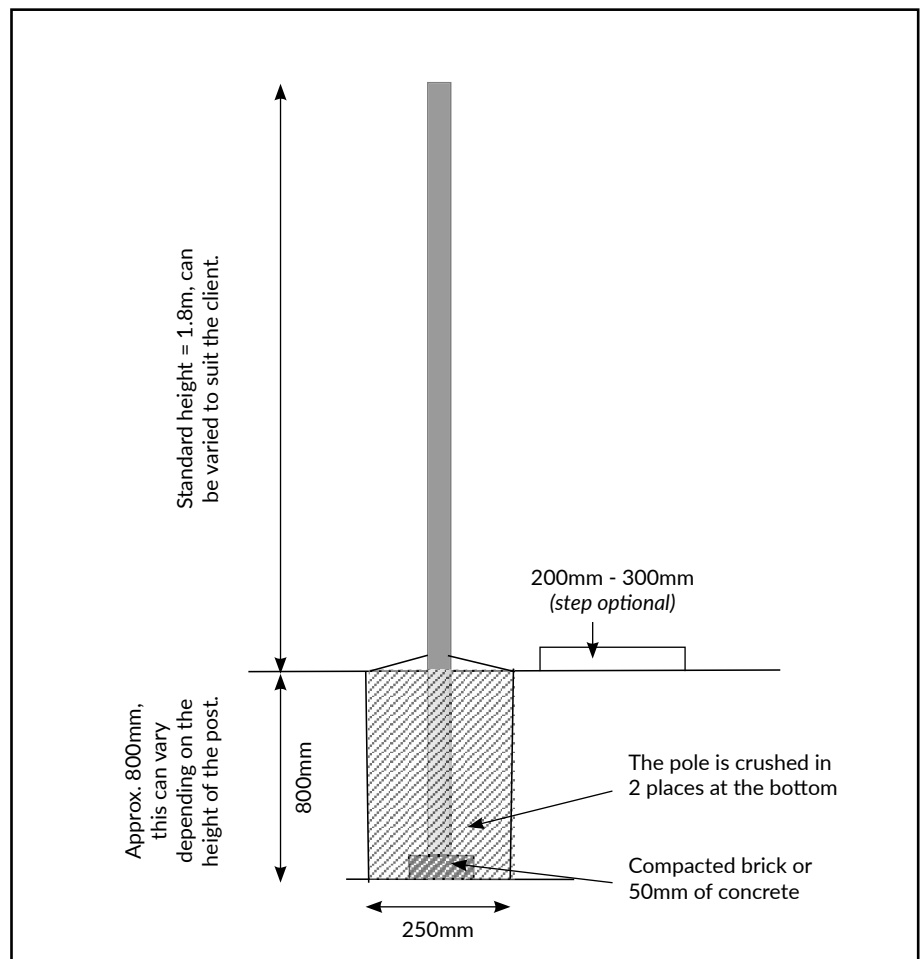
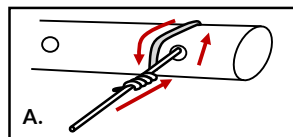
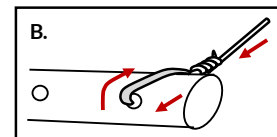


FIG 3



Following the directions of the arrows, thread the wire through the hole and up and over the stay, leaving enough to twist around the taught line several times and then trim wire to tidy.



Coming from the opposite direction, thread the wire through the same hole and up and over the stay, leaving enough to twist around the taught line on the opposite side several times and then trim wire to tidy.